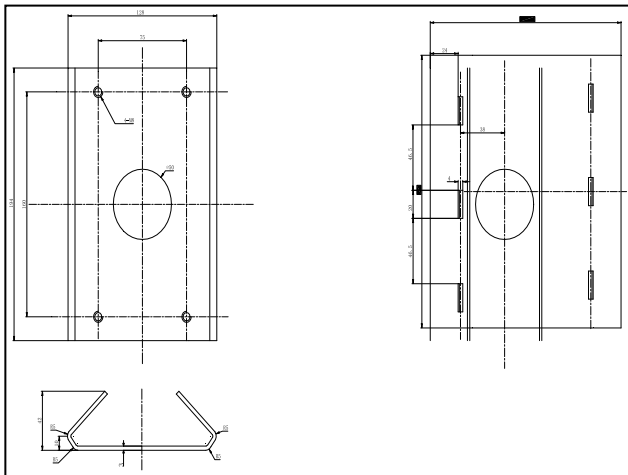
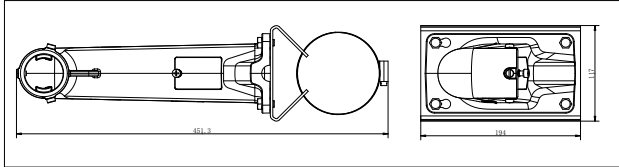




DS-1602ZJ-pole

Vertical Pole Mount Bracket

Dimension:



Order model:

DS-1602ZJ-pole

Parameters:

| | |
|-----------|--|
| Model | DS-1602ZJ-pole |
| Parameter | Vertical Pole Mount Bracket |
| Color | Hik white |
| Feature | Suitable for speed dome pendent mounting |
| Material | Aluminum & Steel |
| Dimension | 117×194×451mm |
| Weight | 2040g |

Notice:

- The bracket should be installed on plat wall
- The bracket is suitable for vertical pole mount of 67-127 mm diameter
- Load capacity of pole should be more than 3 times the weight of camera and bracket
Load capacity of clamp is 30KG

Note: The actual bracket may vary from the picture above.