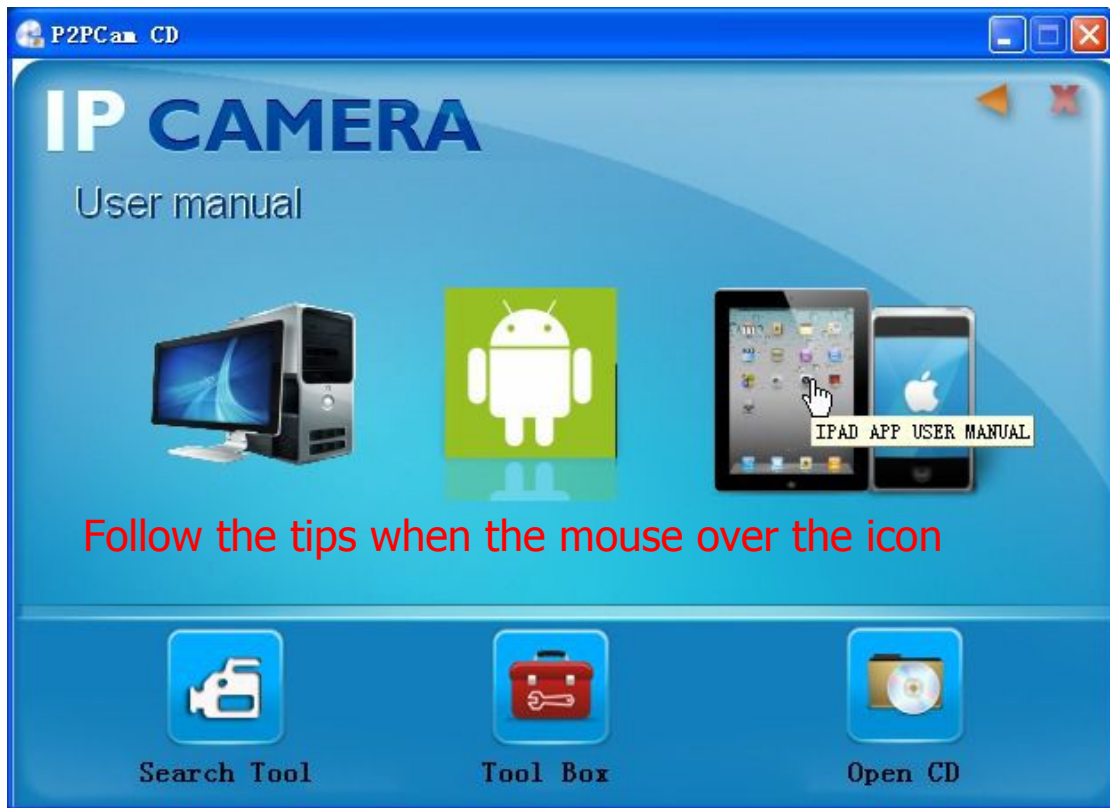


IPHONE IPAD APP USER MANUAL

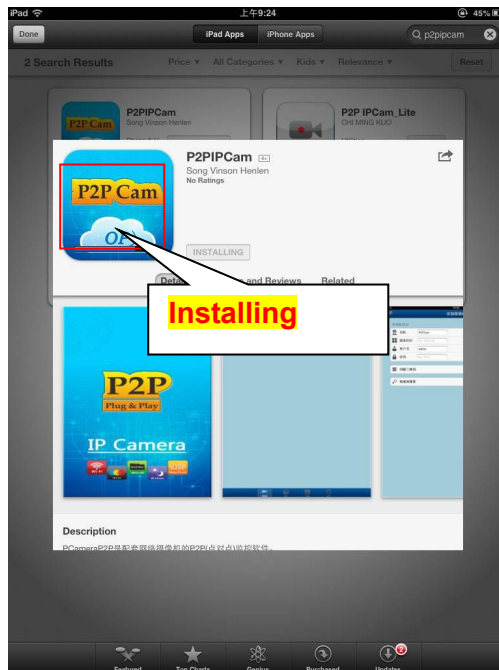
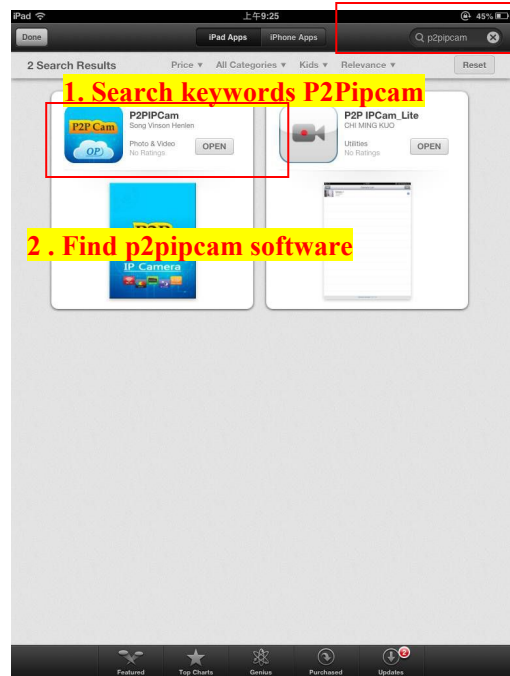
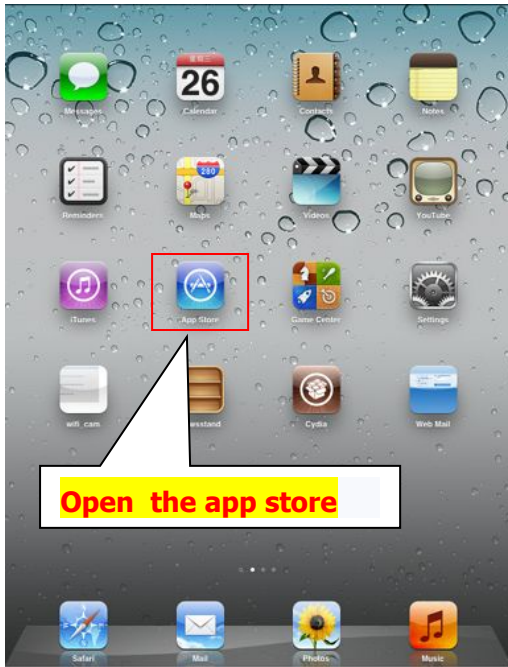


Note : Make sure that the phone is able to connect to the Internet before use the IPHONE,IPAD APP.

Download way.

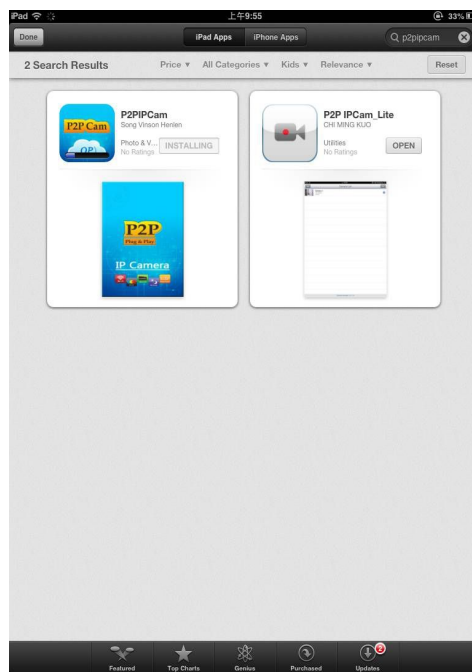
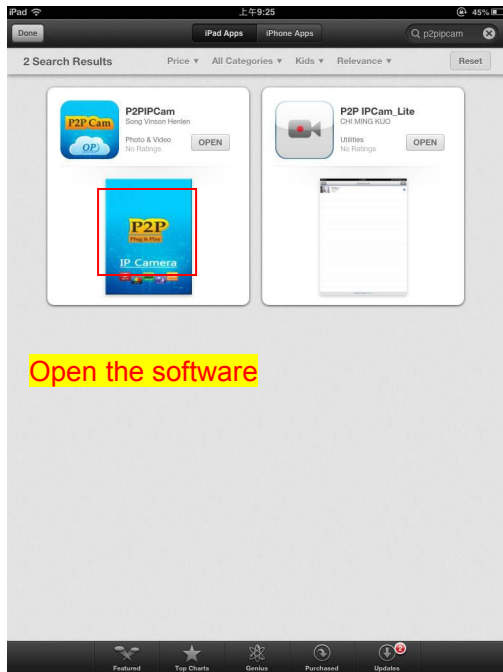
To search and install the "p2pipcam" in the app store.

Pls check as below.



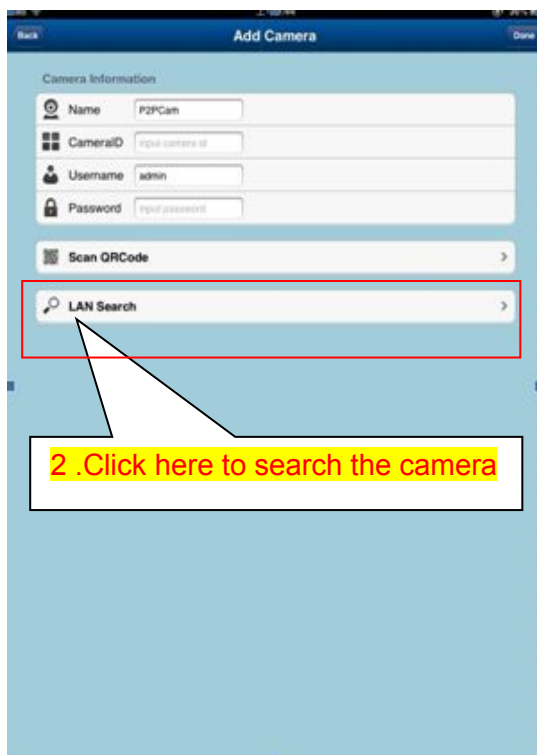
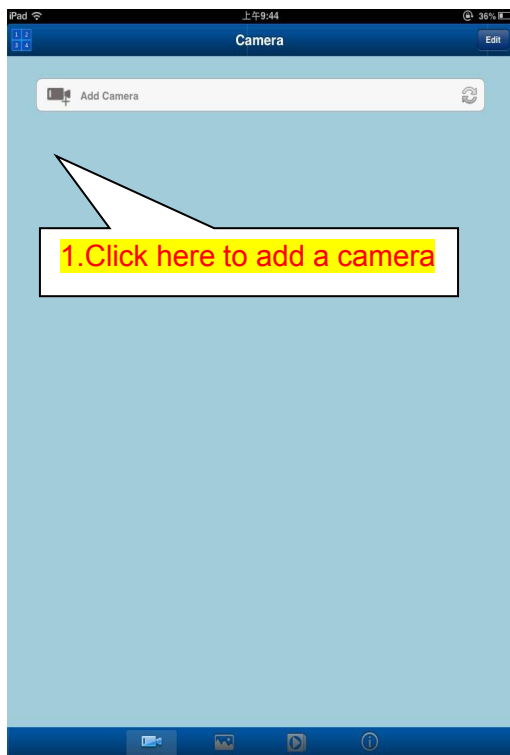
1. Initial interface

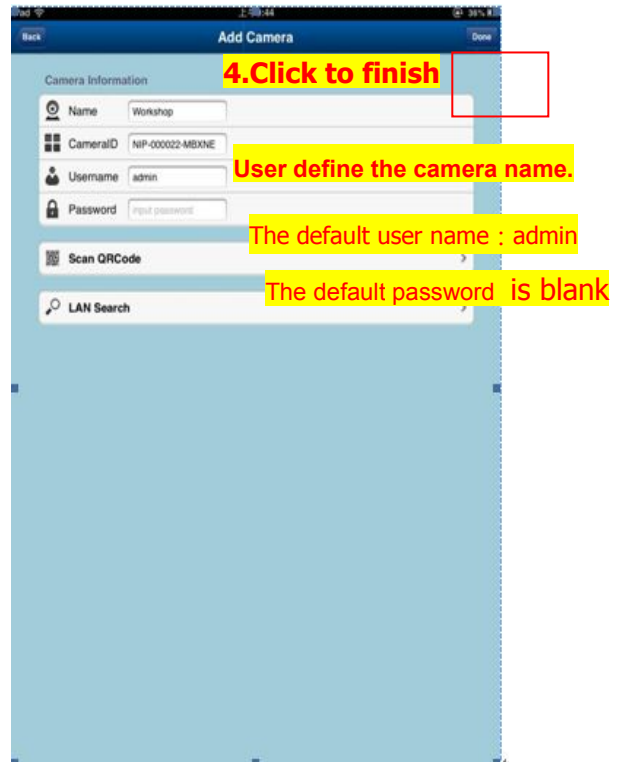
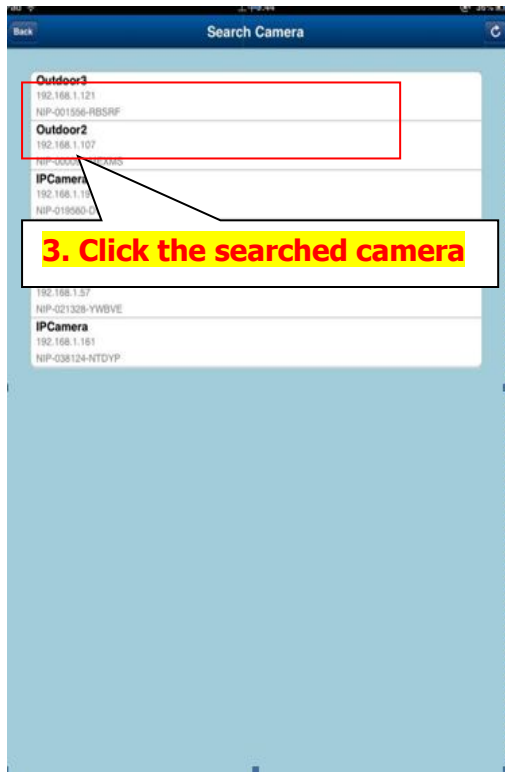
In the main menu of the phone, find the APP and run.



2. Add Device

There are some steps to finish the installation.





There ways to add cameras:

One: Click Search LAN, user can search and add cameras in one LAN, if the cameras and phones are not in one LAN, then cameras won't be searched.

Way 2: Click " Scan QRCode"

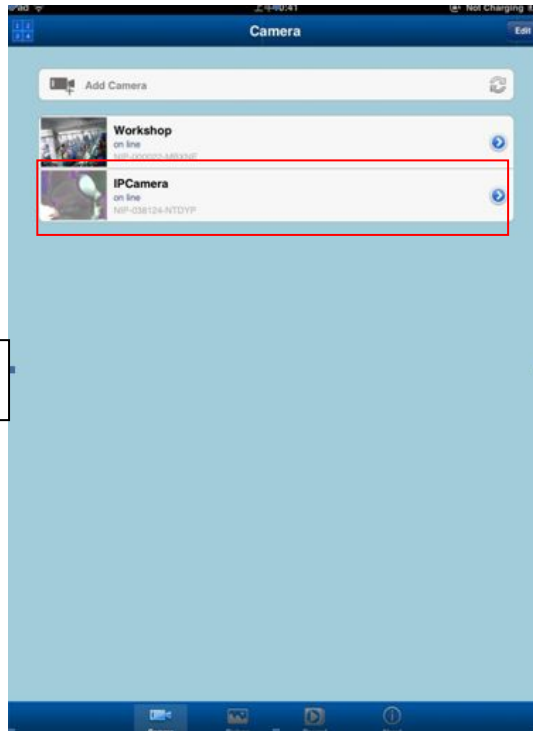
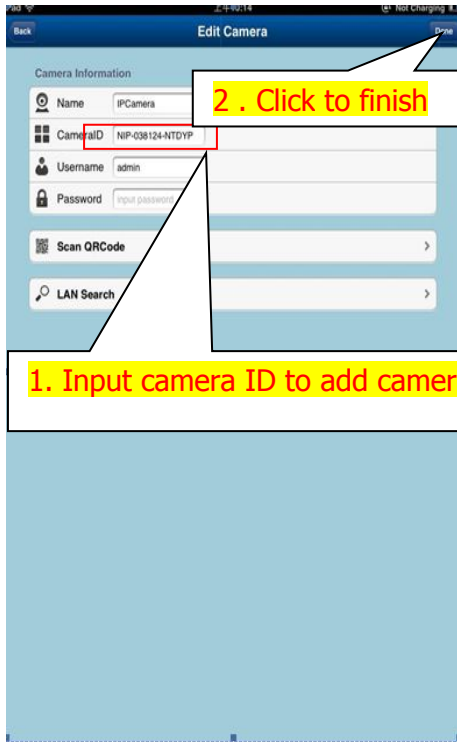
Scan QRCode

Scan the QR Code on the housing of IP



camera. It will find and add the ID automatically, Then click to finish.

Way 3 : Input the UID on the "Device ID" of the APP. The default username is: admin.No password.Note:the "Device ID" is on the bottom of the ip cameras.



● Graphic setting



Four graphic settings, click on the list to the right of the camera

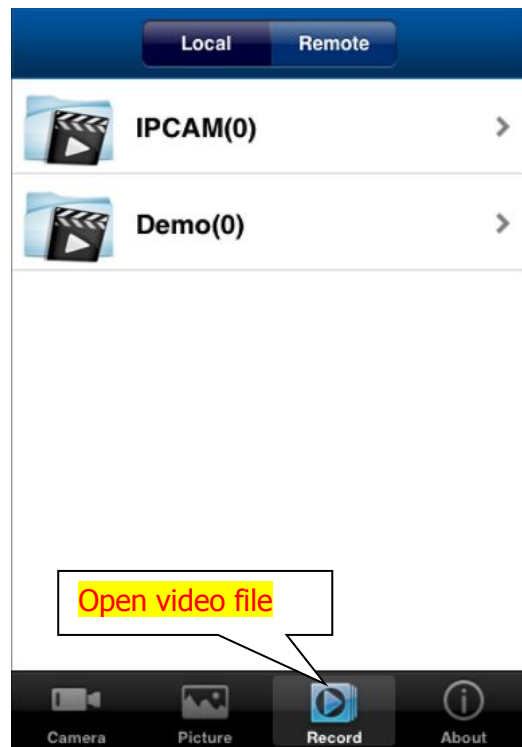
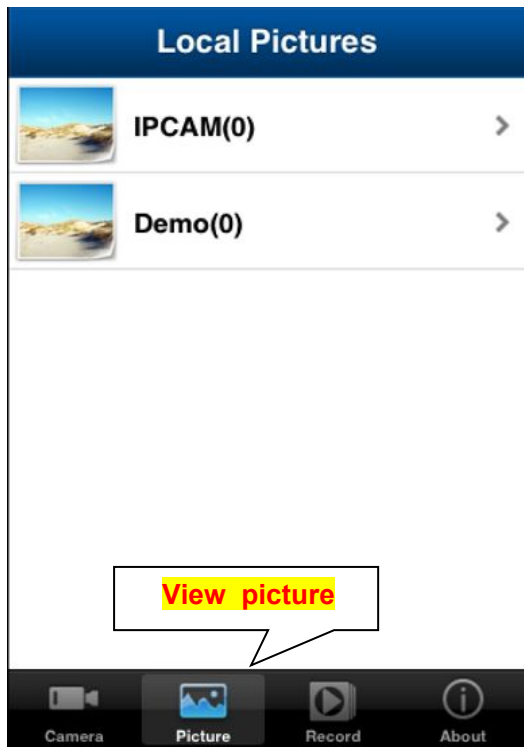


3.View interface



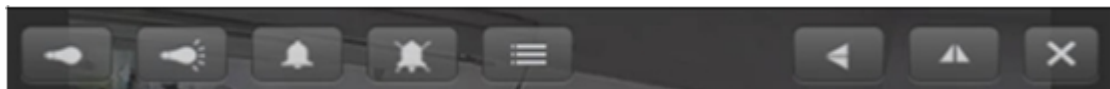


4. Function instruction of the interface button.





4.1 PTZ control:



Function description (from left to right):

1. Infrared lamp closed
2. Infrared lamp open
3. Report to the police closed
4. Report to the police to open
5. Watch the setting
6. Screen upside down
7. Reversal left and right on the screen

4.2 Tool Menu:



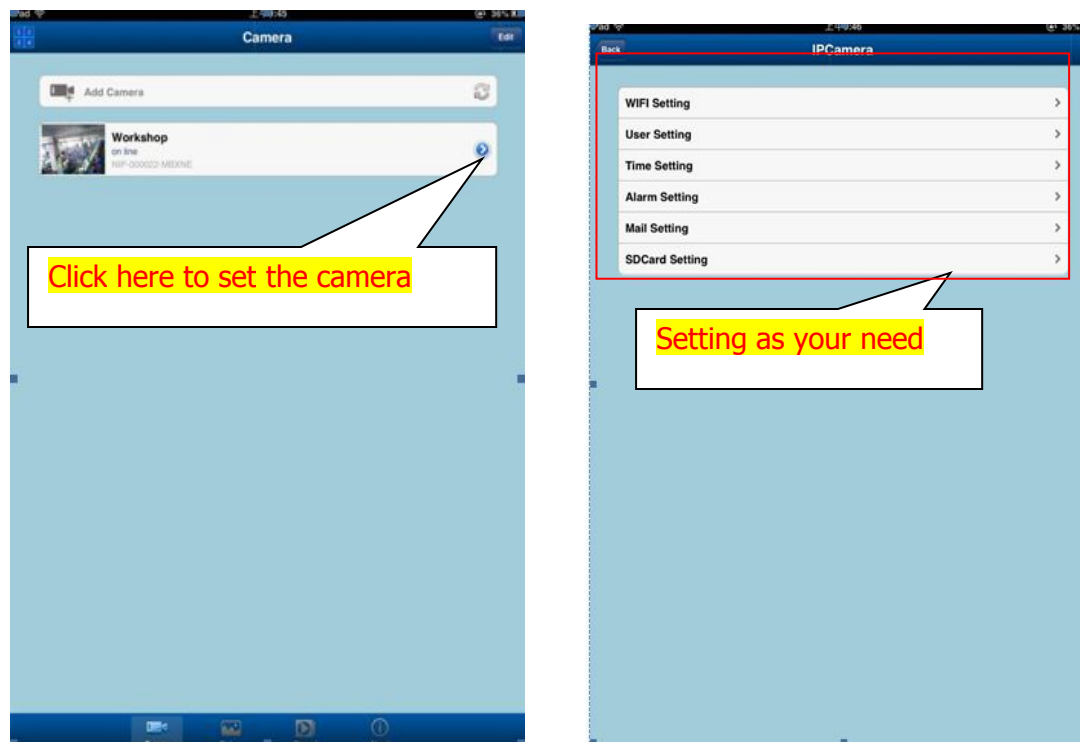
Function description (from left to right) :

1. Photograph
2. Record

3. Audio / mute
4. Talkback
5. Contrast adjustment
6. Brightness adjustment
7. Video parameters to restore the default values
8. Resolution adjustment (When the mobile or IP camera in poor network, it can adjust resolution and reduce the quality.)
9. Full screen display / returns

5. Camera setting

The function setting: Select the IP camera ,click the rounded arrow on the right and enter the setting interface of the camera.Then operate as follows:



Parameter settings: Enter edit mode to modify parameters or delete the camera.

As following :

