



## Features



### Embrace Multi Biometrics Authentication

InBio Pro Plus Series is equipped with embedded facial, fingerprint and card authentication. With RS-485 interfaces, InBio Pro Plus Series is compatible with the ZKTeco's KF1100 Pro/ KF1200 Pro (face reader) and FR1200/ FR1500S (fingerprint reader). It allow swiftly transmit face or fingerprint templates to the InBio Pro Plus via RS-485



### Communication

InBio Pro Plus controllers can be installed easily on your network and support HTTP / HTTPS communication. Web server allows setting and modification of network parameters directly and easily.



### Elevated Capacity and Data Security

Support a maximum of 3,000 face template ,up to 20,000 fingerprint templates, up to 100,000 card users and a maximum of 100,000 Dynamic QR code capacity . By employing the AES 256-bit algorithm for data encryption, the system safeguards against data loss in the event of a power outage or interrupted network connection.



### Reduce Maintenance Cost

The InBio Pro Plus Series allows for remote online firmware updates by ZKBio CVSecurity, facilitating seamless updates not only for the controller but also for the slave RS-485 readers, thereby reducing maintenance expenses.



### Seamless RFID Authentication Integration

With an RS-485 and Wiegand input reader interface, the InBio Pro Plus Series effortlessly connects with ZKTeco's RS-485/ OSDP (Ver 2.1.7) card readers and supports Wiegand reader formats (W26/ W34 / W66).



### Expanded Control and Interface Capabilities

After programming, auxiliary relays can be configured to operate lighting systems, alarm units, and intrusion detection panels. These relays can also interface with supplementary locking mechanisms and gate controllers, enhancing overall security and automation.



### Three unique InBio Pro Plus Models Available

InBio Pro Plus series comprises three models to suit various project needs. InBio Pro Plus consists of 1-door, 2-door, and 4-door models, that can be mixed and matched in an optimized system architecture and to reduce the cost of unused capacity. architecture.



### Advance Access Control Functions

Equipped with a suite of standard access control functions including a built-in web server, support for up to 14-digit User IDs, customizable access levels and groups, holiday scheduling, anti-passback, anti-tailgating measures, linkage capabilities, global linkage settings, support for multiple verification methods, and the ability to integrate up to eight expansion boards.



### Enhanced Security with Dynamic QR Code

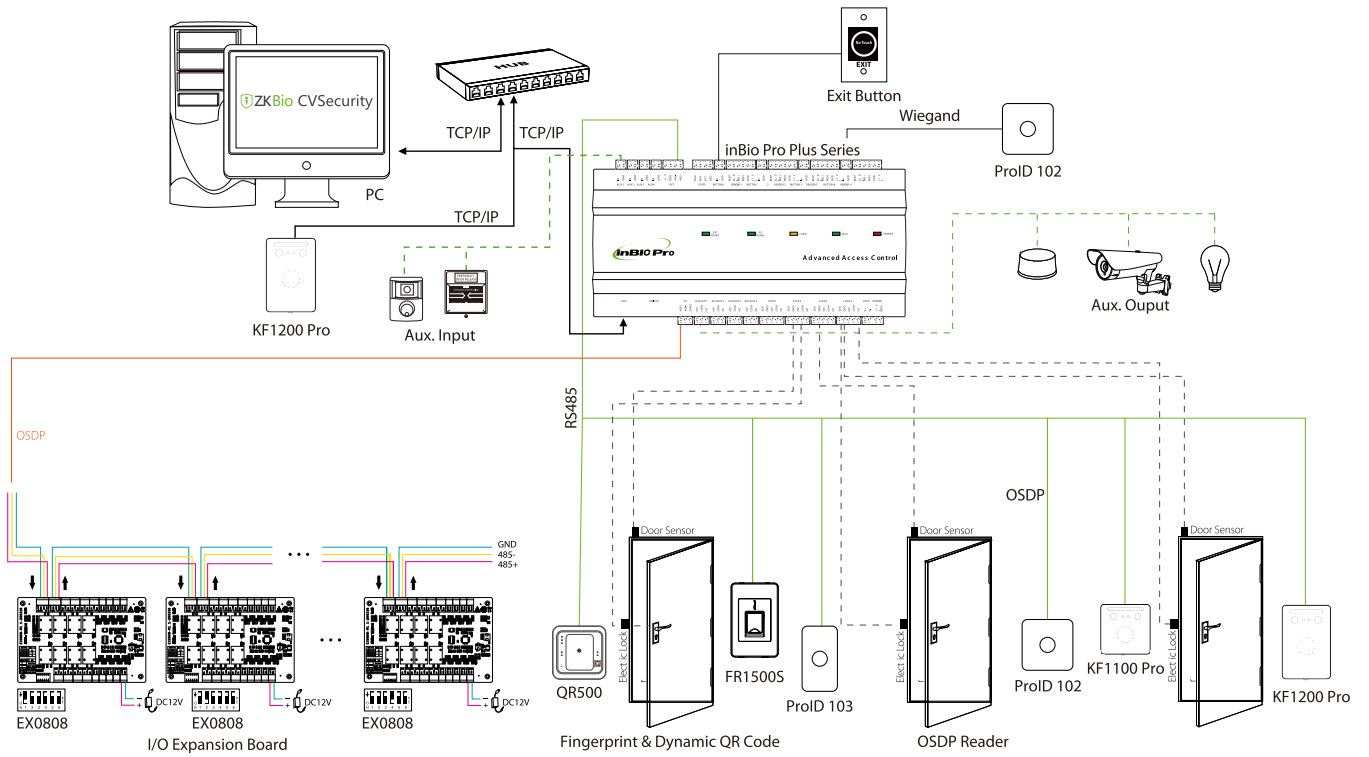
Utilizing an RS-485 QR reader and ZKBio CVSecurity app, the InBio Pro Plus Series offers Dynamic QR codes and integrates with the visitor module, allowing visitors to access authorization by simply opening an HTML page on their smartphone.

## Specifications

Model	InBio160 Pro Plus	InBio260 Pro Plus	InBio460 Pro Plus
Operation System	Linux OS		
Hardware	CPU: Single Core@1.0GHz RAM: 128MB; ROM:256MB;		
Authentication Method	Card / Password / Fingerprint / Face / QR Code		
Access Point Capacity	1 Access Point	2 Access Points	4 Access Points
Reader Capacity	2*RS-485 Readers (ZKTecoRS-485/ OSDP), 2*26/34/66 bit Wiegand Readers	4*RS-485 Readers (ZKTecoRS-485/ OSDP), 4*26/34/66-bit Wiegand Readers	8*RS-485 Readers (ZKTecoRS-485/ OSDP), 4*26/34/66-bit Wiegand Readers
IO Expansion Board Capacity	8pcs EX0808( RS-485 connection )		
User Capacity	100,000		
Card Capacity	100,000 (1:N) (Standard)		
Fingerprint Template Capacity	20,000 (1:N) (Standard)		
Face Template Capacity	3,000 (1:N) (Standard)		
QR Code Capacity	100,000 (Static QR Code/Dynamic QR Code)		
Transaction Capacity	500,000 (Standard)		

<b>Number of Inputs</b>	1*Exit Button, 1*Door Status, 1* AUX Inputs or 64 (with 8pcs of EX0808 IO expansion board)	2*Exit Button, 2*Door Status, 2* AUX Inputs or 64 (with 8pcs of EX0808 IO expansion board)	4*Exit Button, 4*Door Status, 4* AUX Inputs or 64 (with 8pcs of EX0808 IO expansion board)
<b>Number of Outputs</b>	1*Form C Relay for Lock, 1* Form C Relay for Aux Output or 64 (with 8pcs of EX0808 IO expansion board)	2*Form C Relay for Lock, 2*Form C Relay for Aux Output or 64 (with 8pcs of EX0808 IO expansion board)	4*Form C Relay for Lock, 4*Form C Relay for Aux Output or 64 (with 8pcs of EX0808 IO expansion board)
<b>Max. Card Length</b>	Supports up to 66 bits Card Length		
<b>QR Code</b>	PDF417, Data Matrix, MicroPDF417, Aztec scanning in third-party development projects. Dynamic QR codes on the ZKBio CVSecurity mobile application		
<b>Communication</b>	TCP/IP *1 RS-485: ZKTeco RS-485 / OSDP (Optional)*1 Wiegand (Input)*2 USB: Type A (USB Drive Only)*1 Aux Inputs *1, Aux Outputs *1, Electric Lock*1, Door Sensor*1, Exit Button*1, Alarm*1	TCP/IP *1 RS-485: ZKTeco RS-485 / OSDP (Optional)*1 Wiegand (Input)*4 USB: Type A (USB Drive Only)*1 Aux Inputs *2, Aux Outputs *2, Electric Lock*2, Door Sensor*2, Exit Button*2, Alarm*2	TCP/IP *1 RS-485: ZKTeco RS-485 / OSDP (Optional)*1 Wiegand (Input)*4 USB: Type A (USB Drive Only)*1 Aux Inputs *4, Aux Outputs *4, Electric Lock*4, Door Sensor*4, Exit Button*4, Alarm*4
<b>Standard Functions</b>	Webserver, Upto 14-digit User ID, Access Levels, Access Groups, Holidays, Anti-passback, Anti-tailgating, Linkage, Global Linkage, Multiple Verification Methods		
<b>Access Control Interface</b>	Wiegand (Card Reader), RS-485(RS-485 Card Reader/ Fingerprint Reader / Facial Recognition Reader/QR code Reader)		
<b>Power Supply</b>	9.6V- 14.4V DC		
<b>Operating Temperature</b>	0°C to 45°C		
<b>Operating Humidity</b>	20% to 80% RH (Non-condensing)		
<b>Dimensions (L * W * H)</b>	185.12 mm*106 mm*36.07 mm	185.12 mm*106 mm*36.07 mm	226 mm*106 mm*36.07mm
<b>Gross Weight</b>	1.004Kg	1.037Kg	1.098Kg
<b>Net Weight</b>	0.390Kg	0.422Kg	0.494Kg
<b>Supported Software</b>	ZKBio CVSecurity		
<b>Installation</b>	Supported DIN Rail mount / Wall-mount / Metal Enclosure (Optional)		
<b>Enclosure (Optional)</b>	Size: 350 mm*90 mm*300 mm (L*W*H) Material: SPCC steel Power Supply Unit: input 110V~240V AC,output 12V 2A;1A DC Backup Battery: Space reserved [Backup Battery Recommended size: (L*W*H):151 x 94 x 65 mm] Gross Weight:3.57Kg	Size: 350 mm*90 mm*300 mm (L*W*H) Material: SPCC steel Power Supply Unit: input 110V~240V AC,output 12V 4A+1A DC Backup Battery: Space reserved [Backup Battery Recommended size: 151 x 94 x 65 mm(L*W*H)] Gross Weight:3.57Kg	Size: 350 mm*90 mm*300 mm (L*W*H) Material: SPCC steel Power Supply Unit: input 110V~240V AC,output 12V 4A+1A DC Backup Battery: Space reserved [Backup Battery Recommended size:151 x 94 x 65 mm(L*W*H)] Gross Weight:3.77Kg
<b>Certifications</b>	ISO14001, ISO9001, CE, FCC, RoHS		
<b>Factory ID</b>	AC02-CB11H-U10	AC02-CB12H-U10	AC02-CB14H-U10

# Configuration



# Dimensions (mm)

