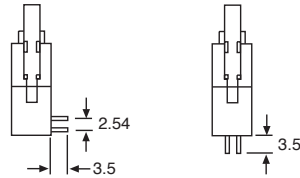
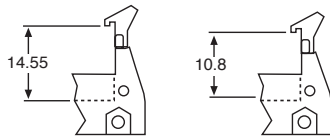
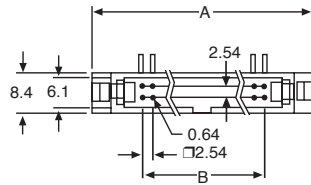
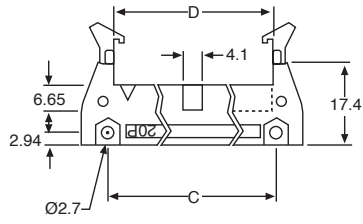


Latched Headers

Latched Headers - 2.54mm
PCB Connectors

Dimension			
A	B	C	D
32.00	10.16	21.84	17.96
34.54	12.70	24.38	20.50
47.08	15.24	26.92	23.04
39.62	17.78	29.46	25.58
44.70	22.86	34.54	30.66
52.32	30.48	42.16	38.28
57.40	35.56	47.24	43.36
62.48	40.64	52.32	48.44
70.10	48.26	59.94	56.60
82.80	60.96	72.64	68.76
95.50	73.66	85.34	81.46
100.58	78.74	90.42	86.54



Position	Straight		Right Angle	
	Gold Plated	Selectively Plated	Gold Plated	Selectively Plated
10	SCP10GS1	SCP10TS1	SCP10GR1	SCP10TR1
12	SCP12GS1	SCP12TS1	SCP12GR1	SCP12TR1
14	SCP14GS1	SCP14TS1	SCP14GR1	SCP14TR1
16	SCP16GS1	SCP16TS1	SCP16GR1	SCP16TR1
20	SCP20GS1	SCP20TS1	SCP20GR1	SCP20TR1
26	SCP26GS1	SCP26TS1	SCP26GR1	SCP26TR1
30	SCP30GS1	SCP30TS1	SCP30GR1	SCP30TR1
34	SCP34GS1	SCP34TS1	SCP34GR1	SCP34TR1
40	SCP40GS1	SCP40TS1	SCP40GR1	SCP40TR1
50	SCP50GS1	SCP50TS1	SCP50GR1	SCP50TR1
60	SCP60GS1	SCP60TS1	SCP60GR1	SCP60TR1
64	SCP64GS1	SCP64TS1	SCP64GR1	SCP64TR1

Add 'S' to the end of the part numbers for short latch versions.

for more information call
01344 304123

