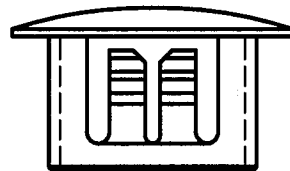
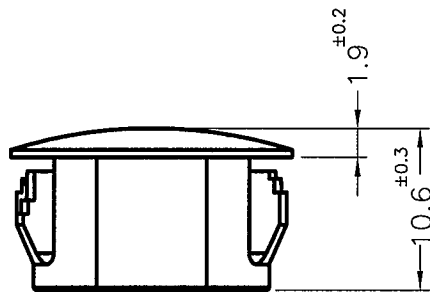
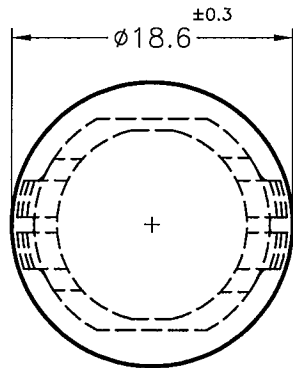
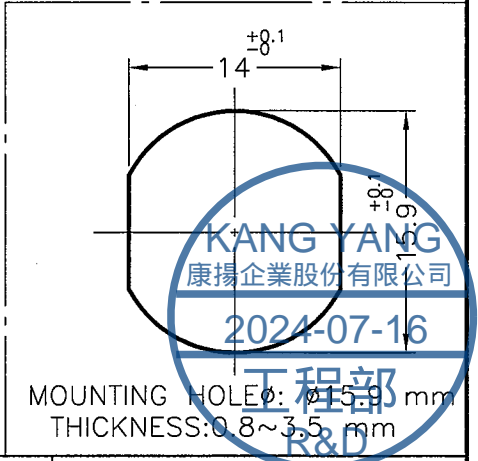


REVISIONS			
REV	DESCRIPTION	DATE	BY

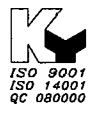
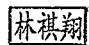



PART NO.	COLOR
M16U(N)	NATURAL
M16U	BLACK

- NOTE: 1. SHRINKING IS NORMAL STATUS.  
 內縮為正常現象。  
 2. MADE OF EQUIVALENT MATERIAL.  
 均可使用同等材質。  
 3. THE COLOR BATCH TEST REPORT IS ONLY FOR FIRST LOT TEST.  
 色母環保檢測報告, 僅提供原始測試報告。



MOUNTING HOLE:  $\phi 15.9$  mm  
 THICKNESS: 0.8 ~ 3.5 mm

 <b>康揚企業股份有限公司</b> KANG YANG HARDWARE ENTERPRISE CO., LTD. <b>康揚塑膠(東莞)有限公司</b> KANG YANG PLASTIC(DONG GUAN) CO., LTD. <b>康哲電腦配件(吳江)有限公司</b> KANG CHE COMPUTER COMPONENTS(WUJIANG) CO., LTD.				TITLE	HOLE PLUGS	SPEC. DWG.	
				MATERIAL	NYLON 66 UL94V-2	DATE	2008.06.24
				FINISH		DRAWN	SAI
				COLOR	SEE ABOVE	CHECK	
PART NUMBER	SEE ABOVE	DRAWING NUMBER	M16U	UNLESS OTHERWISE SPECIFIED TOLERANCE	SEE ABOVE	APPROVED	
SIZE	A4	SCALE	2:1	UNIT	mm	REV	B