

5 Record settings

DVR must contain HDD, as follows:

5.1 HDD management
After installing HDD, boot up the DVR, go to <main menu>-<management tools>-<storage management> to format the HDD. Then set the HDD as read-write.
Note: At least one read-write disk is needed for normal recording.

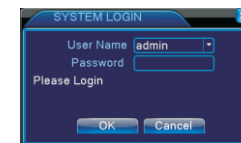
5.2 Video settings
Go to <main menu>-<recordings>-<record settings>.



【Channel】 Choose the corresponding channel number. Choose the all option to set the entire channels.
【Redundancy】 Choose the redundancy

function to double backup the file.
【Length】 Set the time length of each video file between 1min to 120min. 60 minutes is default value.
【Record Control】 Set video state: schedule, manual or stop.
Configuration: Record according to the set video type (common, detection) and time section.
Manual: Corresponding channel starts recording 24 hours non-stop.
Stop: Whatever state the channel is in, the corresponding channel recording stops when stop button is selected.
【Period】 Set the time section of common recording, The recording will start only among the set range.
【Record type】 Set recording type: regular, detection, alarm
Regular: Record according to the set time section. The video file type is "R".
Detect: Within the set time section, trigger the motion detect, video blind, video loss or abnormal analysis. When above alarm is set as opening recording, the recording detection state is on. The video file type is M.

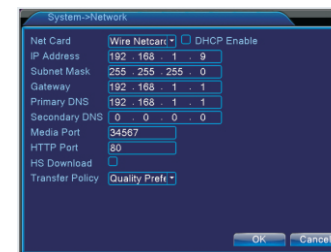
hard-off: Plug the power on the rear panel.
Note: 1. Power recovery: When NVR is shut down abnormally, reboot it, all recordings will be saved automatically and restore to the previous status.
2. Replace the HDD: Shut down the power before replacing.
3.4 System Login
When NVR boots up, the user must login and the system provides the corresponding functions with the user privilege. There are two user settings. The names are admin, default. Admin is default with no password.



Password protection: If the password is continuously wrong three times, the alarm will start. If the password is continuous wrong five times, the account will be locked. (Through rebooting or wait half an hour, the account will be unlocked automatically).

4 Network settings

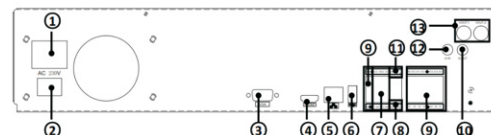
Go to 【Main Menu】 > 【System Settings】 > 【Network Settings】, as follows:
【IP address】 : default
IP1: 192.168.1.9
【Subnet Mask】 : default is 255.255.255.0;
【Default Gateway】 : default is 192.168.1.1.



Note: IP address of the speed dome must share the same network segment with the router and conform to its IP instead of conflicting with other IP to ensure the device access to network; Go to 【main menu】 > 【system settings】 > 【network settings】, select "auto obtain IP address" (Router should enable DHCP).

NO.	Function	NO.	Function
1	Play/pause	14	Power indicator
2	Previous File		Link indicator
3	Next File		Record indicator
4	Rewind/pause		Shift indicator
5	Stop/playback		Alarm indicator
6	Record Search	15	Cancel
7	Alarm output key	16	Screen switch
8	Zoom -	17	Record switch
9	Zoom +	18	PTZ Control
10	Preset set	19	Main Menu
11	USB interface	20	Shift
12	Direction key	21	Auxiliary key
13	OK	22	Jog wheel
		23	power switch

2. 2 Rear panel



NO.	Function	NO.	Function	NO.	Function
1	AC Input	6	USB interface	11	RS485 interface
2	Power switch	7	Alarm output	12	Audio input
3	VGA output	8	Rs232 interface	13	BNC output
4	HDMI output	9	Alarm input		
5	Network port	10	Audio output		

3 Boot & User login

3. 1 HDD installation (Skip this if you don't need storage):
Install the HDD (Skip this if you don't need storage):



1. Install fixed screw for HDD
2. HDD data line and power line connection

3. 2 Boot up
Connect to power, the indicator turns on, NVR boots up.
Note: 1. Use matched adapter to avoid abnormal situation or damage.
2. Shut down power switch (some might have power switches)

3.3 Shut down
To shut down the device, there are soft-Off and hard-off.
soft-Off: Go to <main menu>-<shut down system>;

Fast Manual Instructions for NVR



Supporting Resources

1 Statement

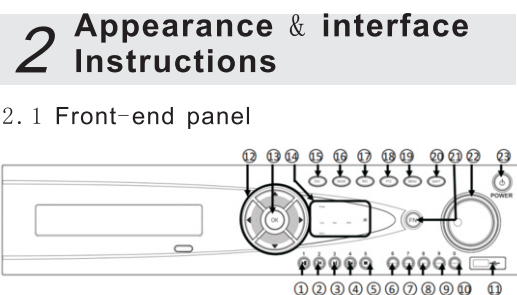
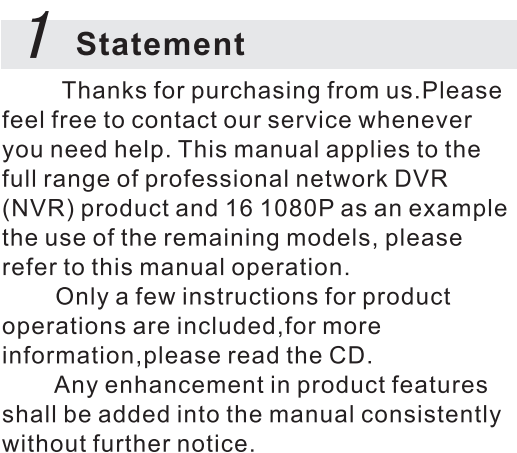
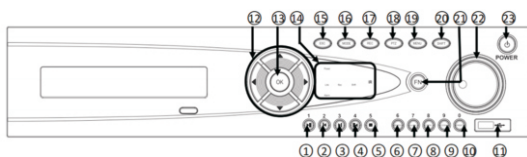
Thanks for purchasing from us. Please feel free to contact our service whenever you need help. This manual applies to the full range of professional network DVR (NVR) product and 16 1080P as an example the use of the remaining models, please refer to this manual operation.

Only a few instructions for product operations are included, for more information, please read the CD.

Any enhancement in product features shall be added into the manual consistently without further notice.

2 Appearance & interface Instructions

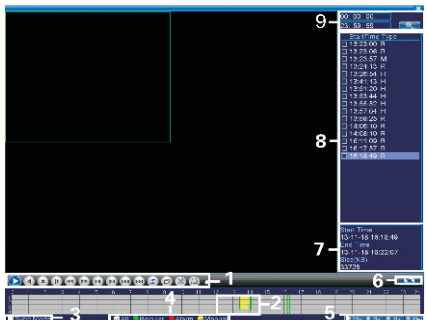
2. 1 Front-end panel



Alarm: rigger the external alarm signal in the set time section. When above alarm is set as opening recording, the “detection recording” state is on. The video file type is “A”.

6 Playback

There are two ways for you to play the video files in the HDD
 1.In the right shortcut menu
 2.Main Menu>Record>playback
 Note: The HDD which saves the video files must be set as read-write or read-only state.



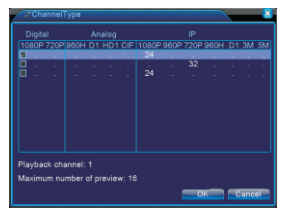
Pic. Record playback

1.Playback control	2.Time display	3.Synchronous	4.Video type
5.Time schedule options	6.search by time/switch mode	7.File Attributes	8.Listed files
9.search by time			

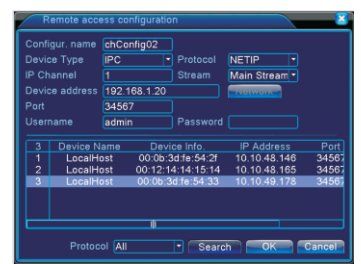
Double-click the file name to playback the video.

7 Channel management

Note: Not all models support this function
 Go to<main menu>-<system settings>-<channel management> to configure,you can connect IP camera under pure network or hybrid network.



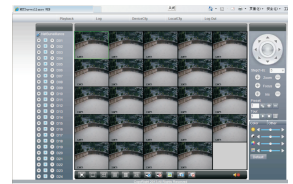
Go to<main menu>-<system settings>-<channel management>-<digital channel> to add IP camera to didital channels.
【 Enable】 ■ means enable,Settings are effective after enbling.
【 Channel】 Select channel number,to add IP camera.
【 Connection Mode】 Single connection and multi-connection, multi-connection can connect to several devices, device will be displayed one by one, tour interval can be set, no less than 10s;single channel can only connect to one monitoring device.
【Add】 Click add ,the following interface will be seen:



【 search】 : Search and display the IP address within the same LAN,such as IPC,DVR and NVR.Choose one IP address,device name,type,IP address,port and protocol will be entered automatically.
【 Protocol】 Support NETTP,ONVIF and all.Default is all.
【ok】 : Click ok to finish adding,go back to digital channel interface,choose added monitoring device to preview.

8 LAN Access

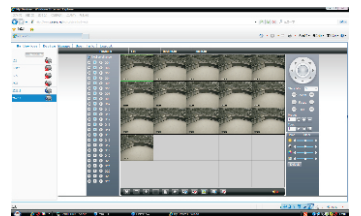
When connected to the network,login DVR to start remote monitoring via IE brower
 8.1 DVR connection
 Open IE browser, enter IP address, take 192.168.1.9 as an example, input http://192.168.1.9 to connect.
 8.2 DVR login
 Enter user name and password.(default user name is admin, no password). Change the administrator password timely after login,as follows:



Note: Plug-ins need to be installed if you login via IE brower.IE is default to intercept plugin.Please set IE security level.Go to<internet options>--<security>--< Customerized Level>--<ActiveX >,enable them all.Or go to our official website to download and install plug-ins (http://www.xmeye.net); Or install IE plug-in _V1.1.0.78.exe via CD.

8.3 Mobile Access
 Network environment:wifi,3G ,4G
 Mobile system:Android, Apple
 Software Name:VmEyeSuper
 Software Download:Google Market,app store
 Note:When the device can access to the public network,you can realise public network monitoring via VmEyeSuper.

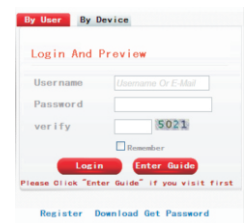
(3)Click login to enter cloud service interface, as follows:



(4) After successful configuration,wherever and whenever you are, as long as you can surf the Internet ,you can get access to the device.
 PC monitoring:Login http://www.xmeye.net;Login with user name and password(user name:guest password:123).
 (5) Device list is on the left,click the device the preview.
 9.2 Mobile Access
 Network environment:wifi,3G ,4G
 Mobile system:Android, Apple
 Software Name:VmEyeCloud
 Software Download:Google Market,app store

9 Public network access (cloud operation)

Cloud technology realises one step on the Internet, which greatly facilitates the customers in public network monitoring.For first use, please start here.If not ,just skip.
 9.1 PC access
 (1) Enter http://xmeye.net to login.



(2) Install step by step according to the guides.



10 Product warranty card

Product Name		Model	
Purchase Date		Distributor	
Purchase Place			
Customer Name		Occupation	
Tel		Post Code	
Company			
Address			

Warranty:
 Warranty period: One year. The Warranty Card only applies for the products you bought from us.
 Please take care of it to get more efficient and better service.