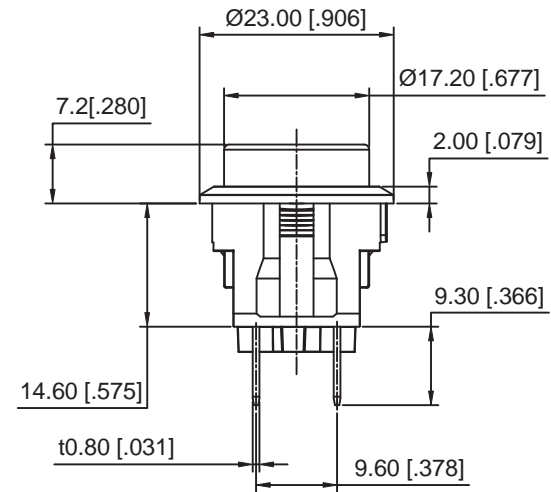
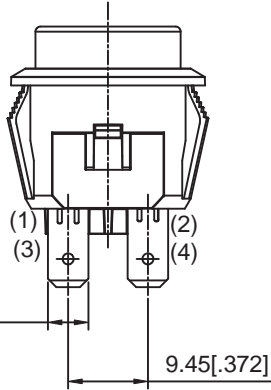
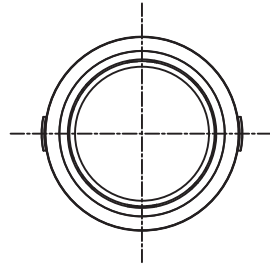
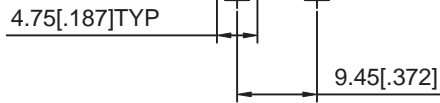
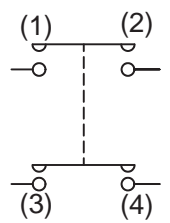


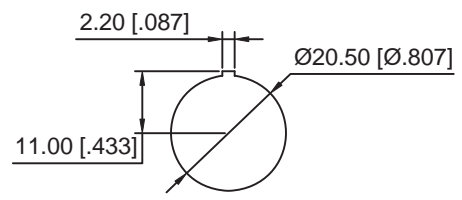
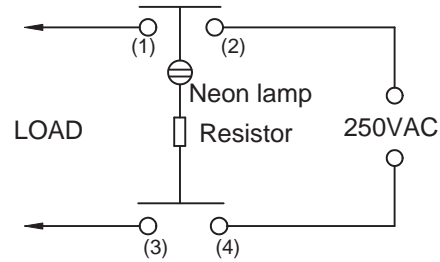
- 1、All dimensions in mm [Inch]
- 2、General tolerance : >10±0.4
<10±0.25
- 3、Electrical rating : 16A 125VAC/250VAC VDE:10(4)A250VAC
- 4、Contact resistance : <20mΩ(initial)
- 5、Insulation resistance : >1000MΩ(500DC between open contacts)
- 6、Dielectric strength : >1500V 1 minute
- 7、Mechanical life : >30000 cycles
- 8、Electrical life : >10000 cycles
- 9、Temperature rise at the terminal : Max.30°C
- 10、Solder ability of terminal : Max350°C,3S(no pressure may be placed in the terminals when soldering by hand)
- 11、Any Cd Pb Hg etc ang it's compounds is not include in this product



CIRCUIT DPST push on momentary



circuit of switch



Panel cut out thickness:0.8~3mm
(0.031"~0.118")

Color	Housing	Actuator
K(Black)	V	
W(White)		
R(Red)		
G(Gray)		
O(Orange)		
B(Blue)		
Y(III. Yellow)		
M(III. Green)		
F(III. Blue)		
T(III. White)		
D(III. Red)		V

* We keep the right to alter the diamension without notice.

德利威電子股份有限公司
DAILYWELL ELECTRONICS CO.,LTD.

符號	原尺寸	修改後尺寸	變更日期	SCALE (比例) : 1.5:1	TITLE 圖名	PUSHBUTTON SWITCH		SIZE 圖紙	A4	
1	(A)			FILE NAME : X0936	DWG NO. 圖號	LC2108KDET2B-AK		UNIT 單位	inch mm	
2	(B)				REV. 版本	A	DATE 日期	OCT - 09 - 2018	SHEET 張數	1 of 1
3	(C)				APPROVE 審核	[陳登財]		CHECK 確認	[范憶雯]	
4	(D)				DRAW 製圖	IRENE				
5	(E)									