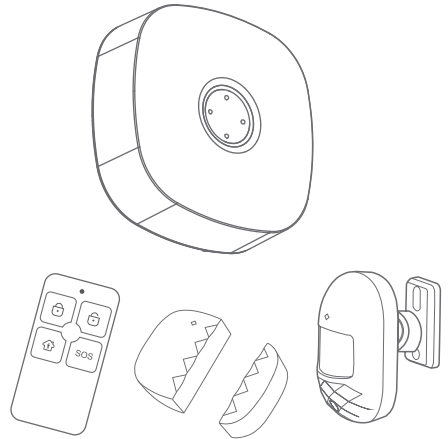


Smart Alarm System

— User Manual —



APP Download

- In APP Store or Google Play, search "SmartLife" and download; or scan the QR code.
 - After downloading the APP, pls register according to the interface, and login.
- After opening the APP, click <Register>, use your mobile phone number or e-mail address for registering.



SmartLife

The smart security alarm kit is centered on the intelligent security host, and is paired with PIR detector, door magnetic sensor, and wireless remote controller to build an intelligent security system. This set of products can realize anti-theft alarm function through simple installation and setting, and can also be linked with smart sockets and other devices to get to smart life.

Main Functions

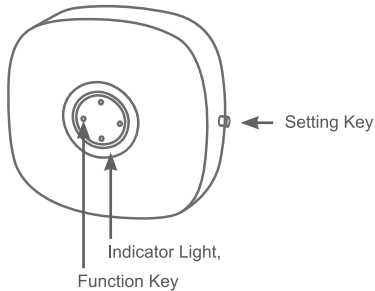
- WiFi connection, APP intelligent control;
- Wireless communication, no need wiring;
- Account level managements, for Administrator and visitor;
- Support 10 zones, each zone can be paired with up to 10 wireless detectors and 8 remote controllers;
- Low-power technology, wireless sensors long time standby;
- Accessories low power reminder by APP; And you can track the accessories status, online or offline;
- Intelligent scene recognition, no closing reminder of door;
- Support multi-zone type switching, adapt to more security scenarios;
- Built-in backup battery in the host, prevent temporarily power off.

CATALOG

Learn Product	01
Fast Setting	05
APP Download	05
Alarm Panel WiFi Connection	05
Add detector	06
APP Operation	08
Account Register	08
Device Control	08
Sensors Management	10
Delay setting	11
Password Setting	12
Timing arming/disarming settings	13
Record check	14
Factory Restore	14
Installation	15
Parameters	18
Notifications	20
Q&A	20

Learn Product

Smart Alarm Panel:



Function Key:

When alarm panel charges by backup battery, press this key to switch on/off the alarm panel, arm/disarm, stop the sound when system alarming;

Switch on: When the alarm panel off power, short press it to switch on;

Note: If the alarm panel off power, once charged by the external power, it will switch on automatically.

Switch off: Charged by backup battery, once panel is switch on, long press the key for 5s, after hearing beep beep, then release the key, indicator light off, alarm panel switch off;

Note: When alarm panel take from the external power, pls attention on its working by backup battery.

Arm/Disarm: In away arm/home arm status, short press 1 time, after beep beep, system disarm; In disarm status, short press 1 time, after beep beep, system away arm;

Stop alarming: When system alarming, short press the function key, then can stop the alarming.

Setting Key:




Sensors pairing: long press the key 0.5-2s, alarm panel sound 1 time, then release the key, the indicator light green flash, get into sensors pairing status; In pairing status, short press 1 time to exit.

WiFi connection: long press the key for 3-5s, alarm panel sound 2 times, then release the key, the indicator light green on, get into WiFi Fast Connection mode.

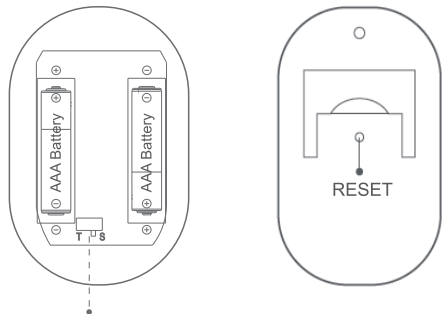
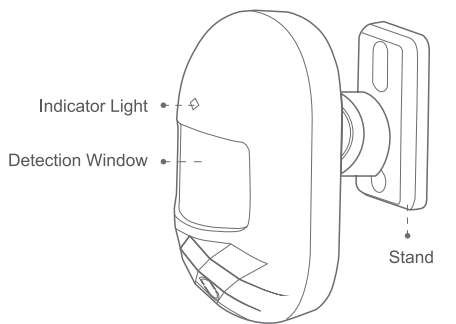
Note: If Fast Connection failed, the alarm panel will change to manual WiFi connection mode automatically(indicator light green slow flash).

Factory Resetting: Long press the key for 10s, the alarm panel sound 3 times, then release the key, alarm panel get to factory resetting.

Indicator Light Status:

	Fast Flash	Slow Flash	Normal on
 Yellow	Defense zone alarm	Network off	
 Green	Sensors Coding	Manual network connection	Fast network connection
 Cyan			Network connection OK

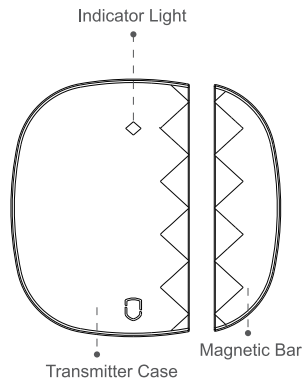
PIR Detector:



Normal Model(T): After one effective triggering, in 1 minute other triggering will no use. The 2nd triggering only works after about 1 minute. This mode is suitable for home and place not too big use.

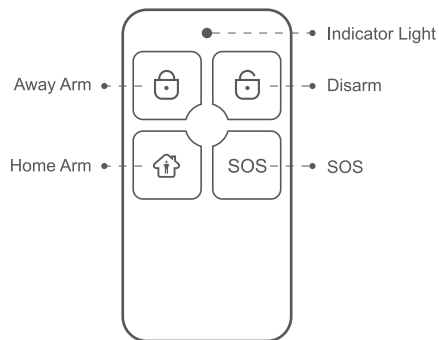
Smart Mode(S): After one effective triggering, if trigger it again in 1 minute, the detection time will be cleared, and restart the time, only after 1 minute the triggering will be effective. This mode is suitable for place with many people to save power.

Door Sensor:



Note: This door sensor is only for indoor use. Pls donot install it on iron/steel doors or windows, which is easily magnetized to affect its use.

Remote Controller:



Fast Setting

STEP1: APP Download

- In APP Store or Google Play, search"SmartLife" and download; or scan the below QR code.

- After downloading the APP, pls register according to the interface, and login.

After opening the APP, click <Register>,use your mobile phone number or e-mail address for registering.



SmartLife

STEP2: Alarm Panel WiFi Connection

① Make sure that your mobile phone already connected by WiFi (Only support 2.4GHz WiFi network);

② Open the APP, click **【+】** on the top right corner; Choose Security&Sensor-> Alarm System(WiFi);

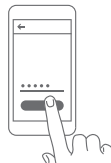
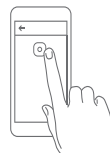
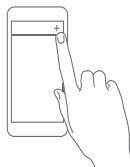
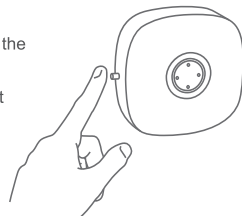
③ Main panel gets into network connection status: firstly switch on the alarm panel, long press **【Setting】** for 3~5s, release the key after hearing 2 beep sound, the indicator light green light normal on, then get into fast network connection mode.

④ Click<Confirm >. choose the WiFi, input the WiFi password, click<OK> to pair the WiFi. Once the alarm panel indicator light Cyan normal on then means alarm panel network connection OK.

Note: Better place smart alarm panel near the router.
Presently the panel does not support 5GHz WiFi

1. Long press 3-5s, release the key after 2 beep sound

2. Indicator light: Green light normal on



STEP3, Add detector

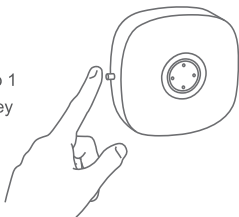
If you buy our smart alarm kit, the sensors and remote controls already coded into the alarm panel, then no need to add again.

If you want to add the new sensors or new device which was factory restored, pls choose the way below for adding.

Way One(APP): Open the APP, in Alarm System(WiFi)-> Smart Central-> Sensor-> **【+】** , the alarm panel gets into pairing status(indicator light green fast flash), trigger the sensor to pair into the alarm panel. The sensors can be door sensor, PIR detector, remote control, you will hear a beep sound after pairing a sensor successfully.

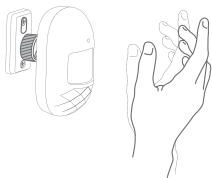
Way Two(Pair into the alarm panel locally): Long press **【Setting】** for 0.5-2s, alarm panel will beep 1 sound and then release the key, the indicator light will be green fast flash, the alarm panel gets into pairing status, trigger the sensor to pair into the alarm panel.

1. Long press for 0.5-2s, beep 1 sound and then release the key
2. The indicator light will be green fast flash

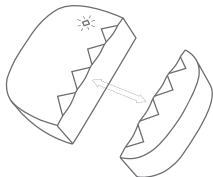


Note: After pairing successfully, alarm panel will beep one sound, repeated pairing the alarm panel will beep two sound. In the smart alarm kit, the sensors are already paired into the alarm panel.

Trigger the PIR detector: the PIR detector will detect the motion;



Trigger the door sensor: separate the transmitter box and the magnetic bar for over 10mm;

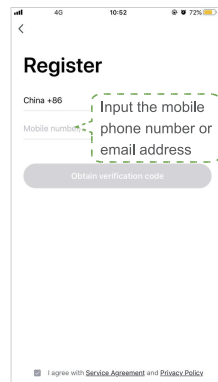
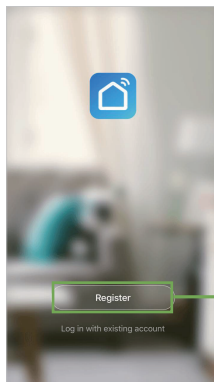


Trigger the remote control: press any button on the remote control.

APP Operation

Account Register:

Open the APP, click <Register>, register by your mobile phone number or email address.



Device Control:

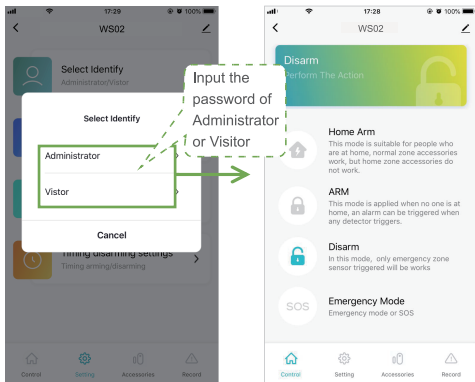
First time adding the device, need to input the Administrator password or Visitor password to get into device control interface. Click <Control> interface, you can control the alarm panel into home arm, away arm, disarm, SOS alarm modes as you like.

Home Arm: This mode is suitable for people at home. Trigger the common defense zone sensors will not alarm; Trigger the special zone sensors will alarm.

Away Arm: This mode is for people not at home. Any defense zone sensor is triggered will cause alarm.

Disarm: This mode for system disarm, only 24hours zone sensors cause emergency alarm.

SOS: This mode for SOS alarm.



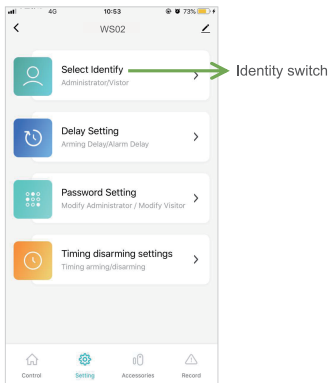
Note:

Default Administrator password: 123123 ;

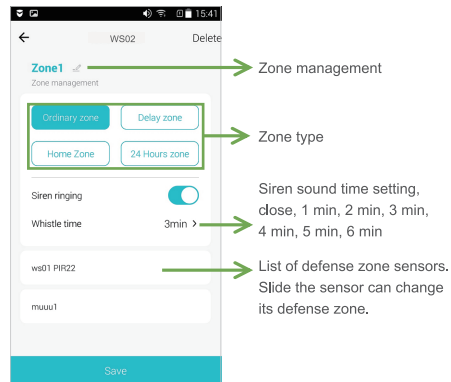
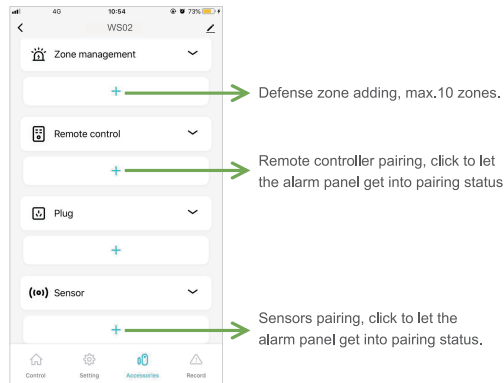
Default Visitor password: 123456 ;

Administrator: Can control, program, setting the device;

Visitor: Only can control the device.



Sensors Management:



Defense zone type	Away arm	Home arm	Disarm
24 Hours zone	Alarm	Alarm	Alarm
Ordinary zone	Alarm	No alarm	No alarm
Close zone	Alarm	Alarm	No alarm
Delay zone	Delay alarm	Delay alarm	No alarm

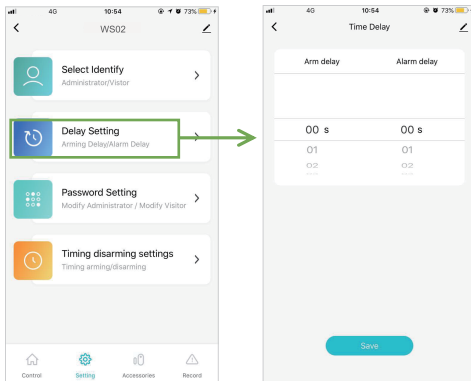
Delay setting:

Choose <Setting> interface, input Administrator password, click <Delay Setting> to set the delay zone.

Arming delay: when system arm, the delay defense zone will be armed in the setting time. 0-60s option. 00 means no arm delay.

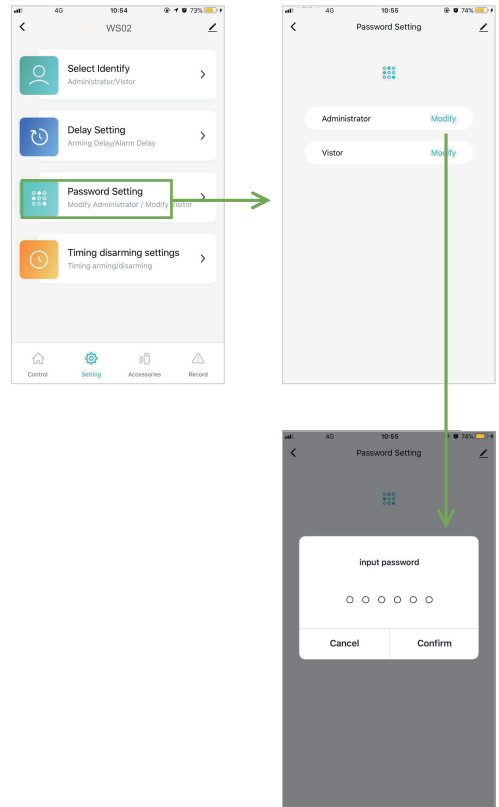
Alarm delay: 0-60s for option, 00 means no alarm delay.

Note: only set the zone into delay zone, then alarm will delay, default delay alarm time 10s.



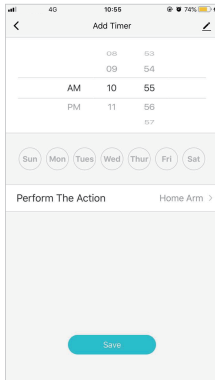
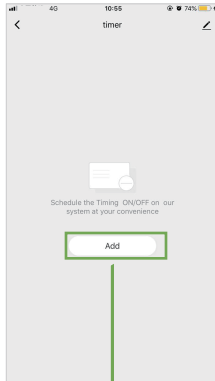
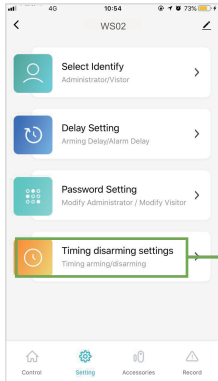
Password Setting:

Choose <Setting>, click <Password Setting> to modify the password, passwords for Administrator and for Visitor.



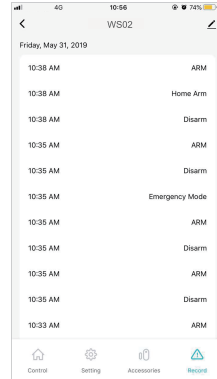
Timing arming/disarming settings:

Choose <Setting>, input Administrator password, click <Timing disarming settings>,and then <Add>, then you can set timing arm, home arm and disarm.



Record check:

Choose <Record> interface, then you can the alarm records.

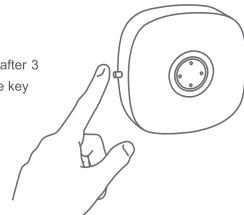


Factory Restore

Smart Alarm Panel:

Long press <Setting> for 10s, the alarm panel will sound 3 beeps then release the key, then alarm panel will get back to factory restore.

Long press 10s, after 3 beeps release the key



Note: After factory restore, all the sensors will be deleted, all the settings will back to factory default. Pls attention.

Installation

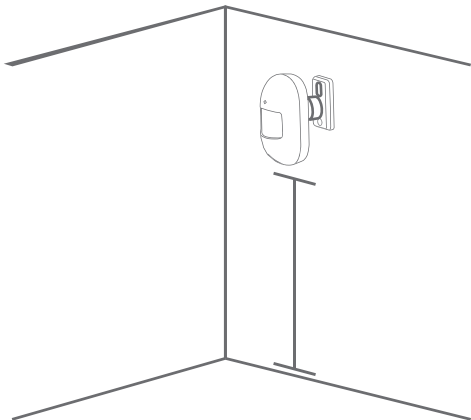
Smart Alarm Panel Installation:

Pls attention, donot place the alarm panel and router too long, better for 2-5m.



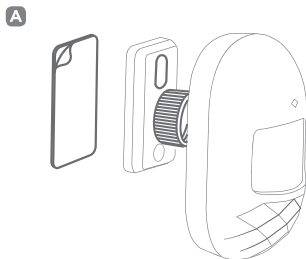
PIR detector

1. Install on the wall, about 1.8-2 m above the floor.



Installation way A:

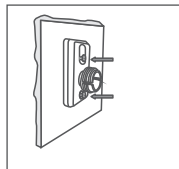
Use 3M super double-sided tape to fix the PIR detector on the wall. This way is suitable for the wall which is smooth and hard;



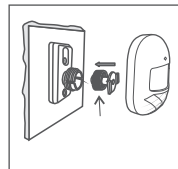
Installation way B:

Use the screws to fix the stand of the PIR. This way is suitable for most of the walls, we recommend to use this way.

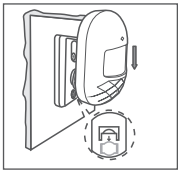
Loose the stand you can adjust the angle of the PIR.



1. Use the screws to fix the stand of the PIR.



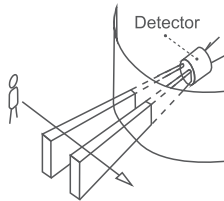
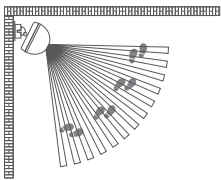
2. Loose the stand you can adjust the angle of the PIR.



3. Fix the stand of the PIR, and adjust the angle.

2. Installation Suggestions:

Note: This PIR detector detection angle(detection distance≈7m/ detection angle≈90°)



3. Notifications:



Away from heat;



Away from the straight sunshine;



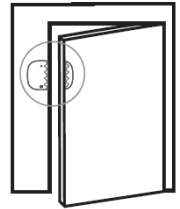
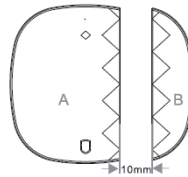
Donot install it outdoor;



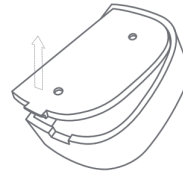
Donot install near the waving curtain.

Door Sensor

Use double side tape to fix the door sensor on door or window.



If need replace the battery: Pls use the screw driver to take off the back cover, and then change the battery.



Parameters

Smart Alarm Panel

Power supply: AC 100~240V

Wireless standard:IEEE 802.11 b/g/n, 433.92MHZ (transmitter and receiver)

RF distance: 70m(for free space)

Modulation mode: AM

Working enlivenment: Temperature -10℃ ~ +50℃,

Humidity < 90% RH

Device dimension: 81.6X81.6X74.2mm

PIR Detector

Power Supply: DC3V (2 * AAA)

Standby current: $\leq 20\mu\text{A}$

Alarm current: $\leq 20\text{mA}$

Wireless standard: 433Mhz

Wireless distance: 70m(for free space)

Detection angle: 7m/90°

Working environment: Temperature $-10\text{C} \sim +50\text{C}$,
Humidity 5%~95% RH

Dimension: 94*54*41mm (excludes the stand)

Door Sensor

Power Supply: DC3V (1 * CR2032)

Standby current: $\leq 3\mu\text{A}$

Alarm current: $\leq 15\text{mA}$

Wireless standard: 433Mhz

Wireless distance: 70m(for free space)

Working environment: Temperature $-10\text{C} \sim +55\text{C}$,
Humidity $\leq 80\%$ RH

Dimension: 50*35*17mm(transmitter box);
48*13*17mm(magnetic bar)

Remote Controller

Power Supply: DC3V (1 * CR2032)

Standby current: $\leq 3\mu\text{A}$

Alarm current: $\leq 15\text{mA}$

Wireless standard: 433Mhz

Wireless distance: 70m(for free space)

Working environment: Temperature $-10\text{C} \sim +55\text{C}$,
Humidity $\leq 80\%$ RH

Dimension: 69*36*11mm

Notifications

- Take the alarm panel off the external power, pls long press the function key for 5s, you will hear two beep sound, then release the key, the indicator light will be off.
- Better decrease the distance between sensors and alarm panel;
- Between the sensors and alarm panel, better avoid the hard walls and appliances;
- Donot press the function key of the alarm panel too hardly.
- Donot use the device in humid environment.
- Donot use the device in flammable explosive environment.
- Pls keep the device clean and dry.

Q&A

Q1: If the alarm panel failed to connect the network?

A: Pls check whether the WiFi is normally working or not.

Q2: If forgot the admin password?

A: Pls restore to factory resetting.

Q3: If the mobile phone couldnot get the alarm push?

A: Pls check whether the mobile phone did the setting: donot accept push.

Q4: If the APP shows that the sensor is offline?

A: Pls check the sensor is enough power or normal working.