

User Manual T6-120M (EN)



Smart Touch Wall Switch

User Manual V1.0

Introduction

The TX Gen2 Smart Wall Touch Switch provides 1–3 channel (1C/2C/3C) control options with a 120–type panel design, supporting neutral–required supply modes. By connecting to Wi-Fi, you can remotely control, set timers, and create automation scenes through the eWeLink app. It is also compatible with the Matter ecosystem, seamlessly integrating with major smart home platforms like Apple Home, Google Home, and Amazon Alexa, enabling cross–brand smart interactions.



Matter Compatibility



Night Switch Locator



Detach Relay Mode



Smart Schedule



Smart Scene



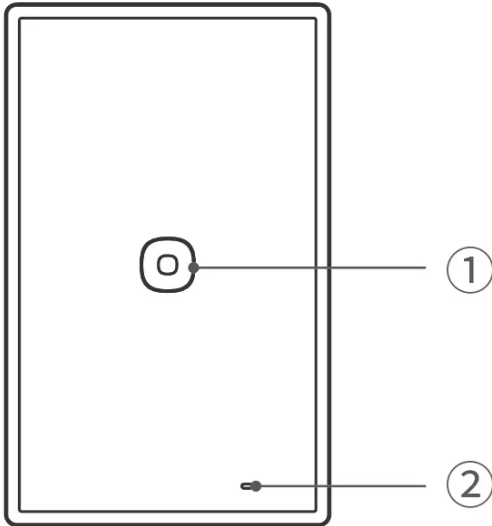
Voice Control



Share Control



Group Control



① Button

- Single press: Turn on/off the smart device.
- Press and hold for 5 seconds: Device enters the pairing mode. (Pairing time 10 minutes)

② LED indicator (Blue)

eWeLink Ecosystem:

- Keeps on: Online.
- Slow flash once: Offline.
- Flashes two short and one long: Device is in pairing mode.
- Flashes twice: LAN.

Matter Ecosystem:




- Keeps on: Online.
- Slow flash once: Offline.
- Flashes two short and one long: Device is in pairing mode.

Platform Certification



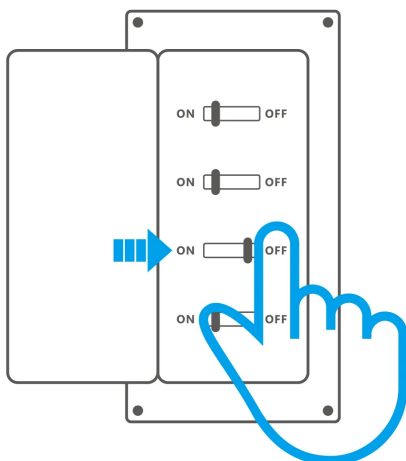
Specification

| | |
|----------------|-----------|
| Product name | TX Gen2 |
| Product series | TX Series |

| | |
|-------------------------------|--|
| Product type | Smart Touch Wall Switch |
| Model | T6-1C-120M, T6-2C-120M, T6-3C-120M |
| MCU | BK7238 |
| Rating | 1C: 100-240V~ 50/60Hz 10A Max Resistive load  μ 2C: 100-240V~ 50/60Hz 10A Max/gang, Total 16A Max Resistive load  μ 3C: 100-240V~ 50/60Hz 10A Max/gang, Total 16A Max Resistive load  μ |
| LED | 1C: 150W@100V, 300W@240V 2C: 150W@100V/gang, 300W@240V/gang, Total 300W@100V, 600W@240V 3C: 150W@100V/gang, 300W@240V/gang, Total 450W@100V, 900W@240V |
| Wireless connectivity | Wi-Fi: IEEE 802.11b/g/n 2.4GHz |
| Net weight | 1C: 133.3g, 2C: 140.7g, 3C: 149.5g |
| Product dimension | 120x74x37.7mm |
| Color | White |
| Casing material | PC+Glass |
| Diameter of wiring(recommend) | 16AWG to 11AWG SOL/STR copper conductor only |
| Applicable place | Indoor |
| Working temperature | -10°C~40°C |
| Working humidity | 5-95%RH, non-condensing |
| FCC ID | 2APN5-T63C120M |
| Certification | CE/FCC/RoHS |

Installation

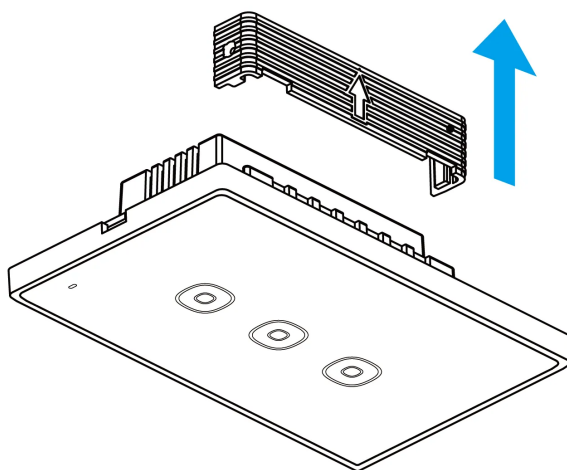
1. Power off



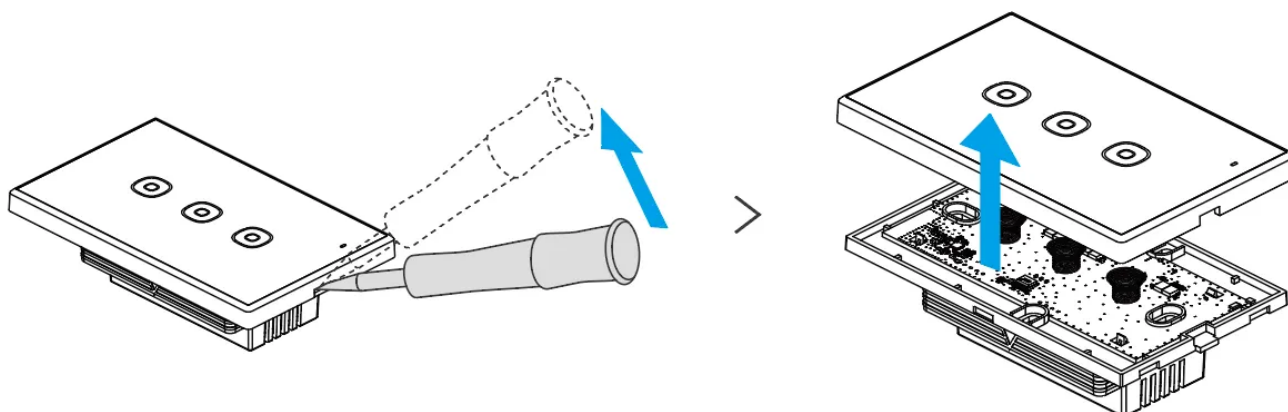
WARNING

Please install and maintain the device by a professional electrician. To avoid electric shock hazards, do not operate any connection or contact the terminal connector while the device is powered on!

2. Remove the protective cover



3. Panel Removal

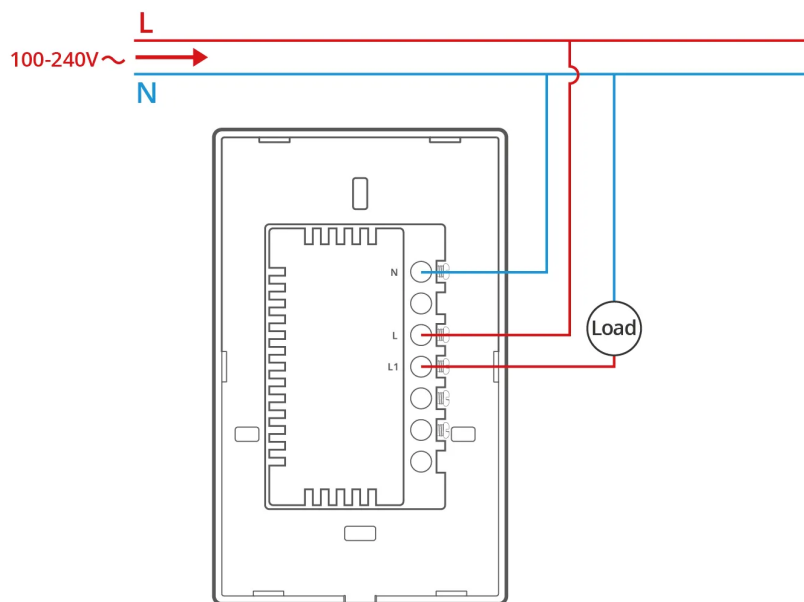


4. Wiring instructions

⚠ To ensure the safety of your electrical installation, it's essential either a Miniature Circuit Breaker (MCB) or a Residual Current operated Circuit-breaker with Integral Overcurrent protection(RCBO) with an electrical rating of 10A, 16A has been installed before the T6-1C-120M(10A), T6-2C-120M(16A), T6-3C-120M(16A).

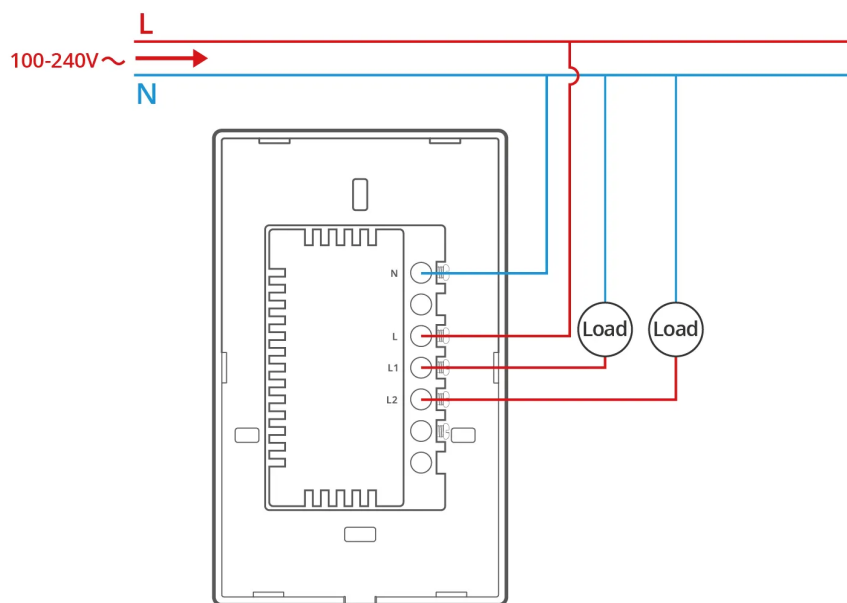
⚠ Make sure all wires are connected correctly.

ITEAD - 黎业军



1C

ITEAD - 黎业军



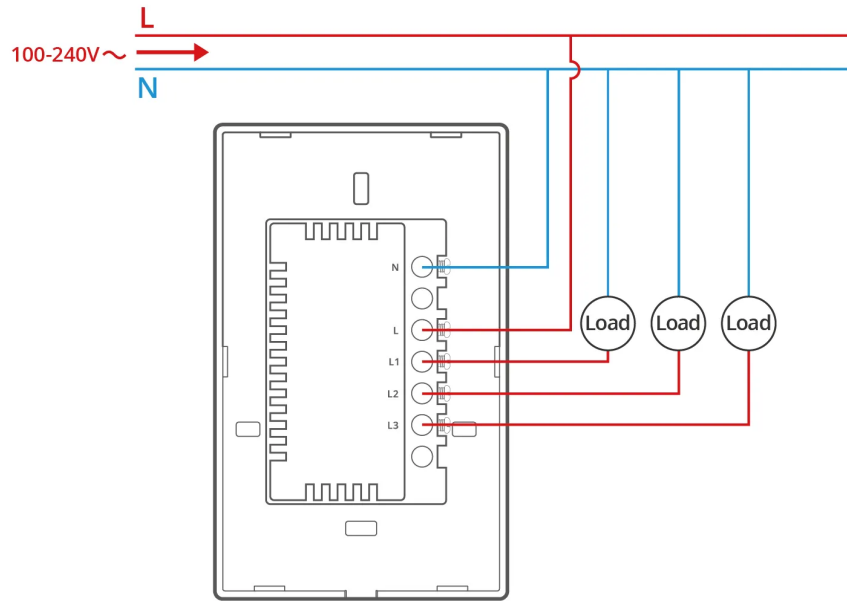
2C

ITEAD - 黎业军

ITEAD - 黎业军

ITEAD - 黎业军(2602432)

ITEAD - 黎业军(2602432)



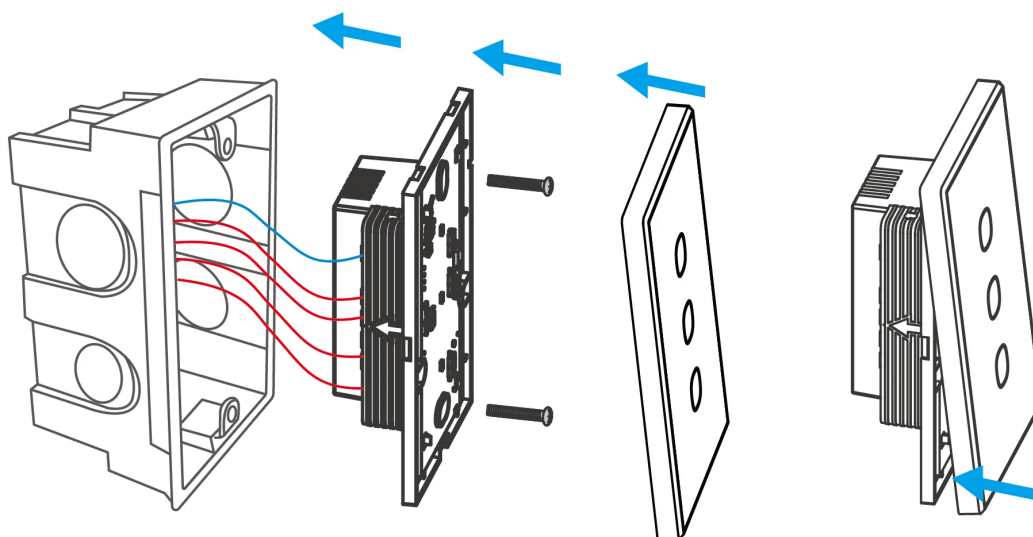
3C

Instructions for wiring symbols

| Terminals | |
|-----------|------------------------------------|
| N | Neutral_Input |
| L | Live_Input |
| L 1 | Live Output Terminal 1 (100–240V~) |
| L 2 | Live Output Terminal 2 (100–240V~) |
| L 3 | Live Output Terminal 3 (100–240V~) |

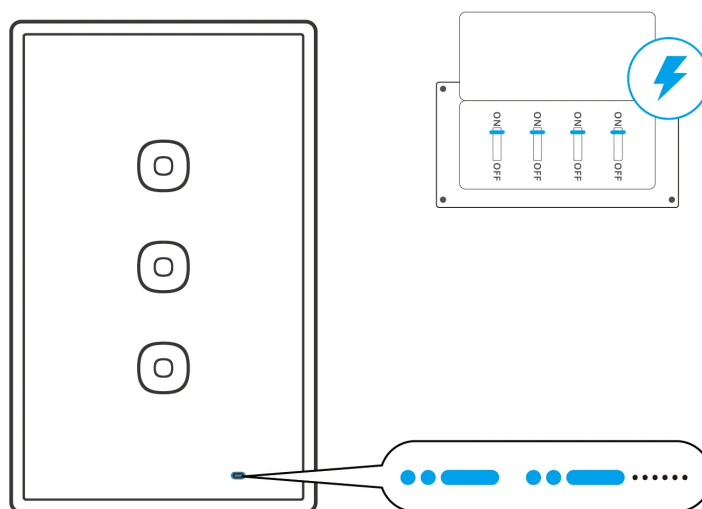
⚠ After completing the wiring, reinstall the protective cover in the original direction of removal.

5. Installation



Power on

After powering on, the device will enter "pairing mode" during the first use. The LED indicator changes in a cycle of two short and one long flash and release.



⚠ The device will exit the Pairing Mode if not paired within 10mins. If you want to enter this mode, please long-press the button for about 5s until the LED indicator changes in a

cycle of two short and one long flash and release.

Matter Ecosystem User Guide

Open a Matter-compatible App to scan the Matter QR code on the Quick Guide or the device itself to add the device.



Add to Apple via
Matter



Add to Google via
Matter



Add to Alexa via
Matter

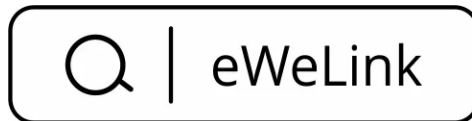


Add to SmartThings
via Matter

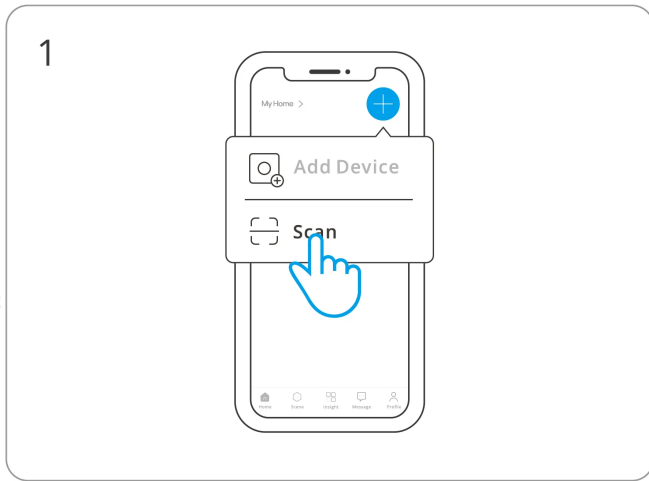
eWeLink Ecosystem User Guide

① Download the eWeLink App

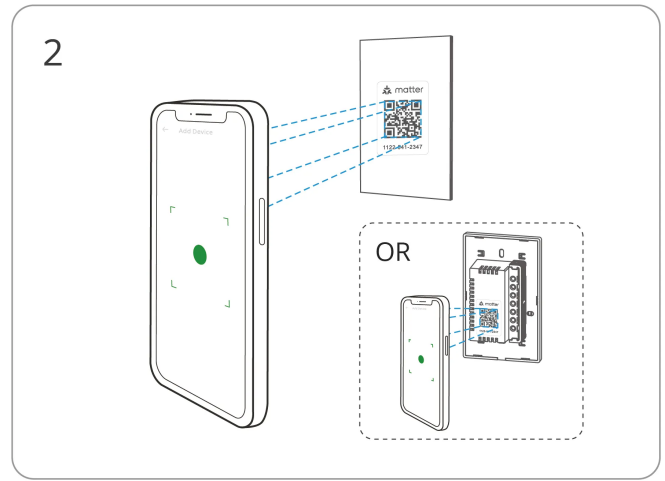
Please download the "eWeLink" App from **Google Play Store** or **Apple App Store**.



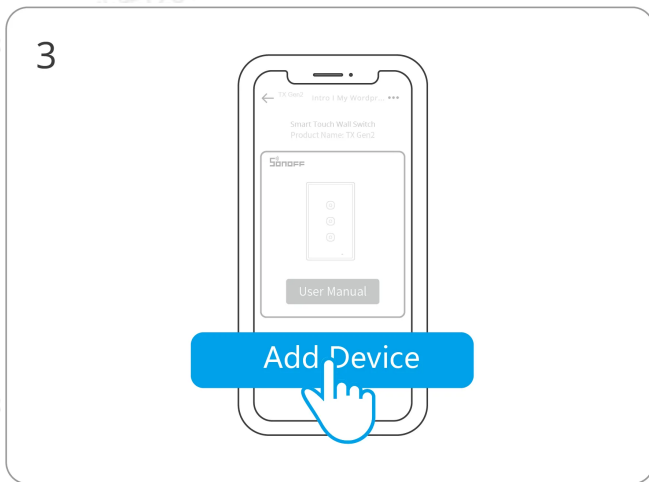
② Scan QR code to add the device



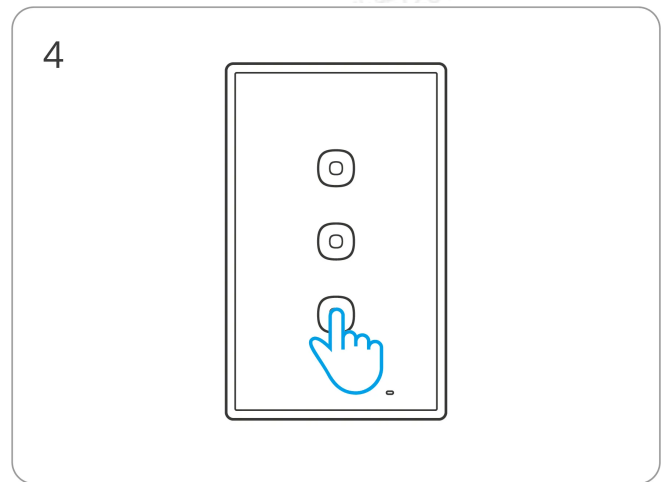
Enter "Scan"



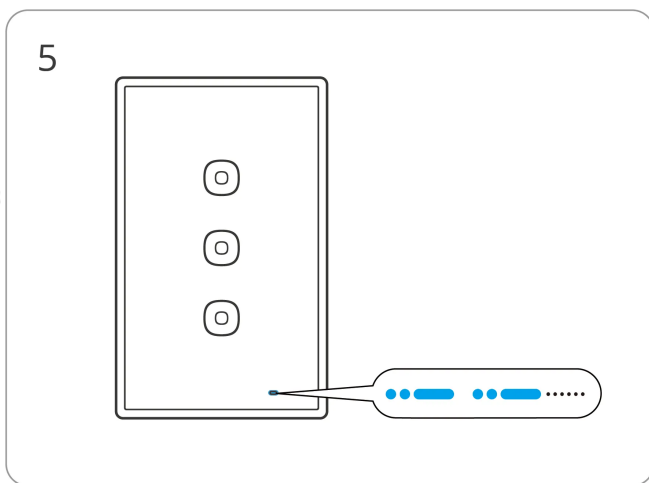
Scan the QR code on the quick guide or the device



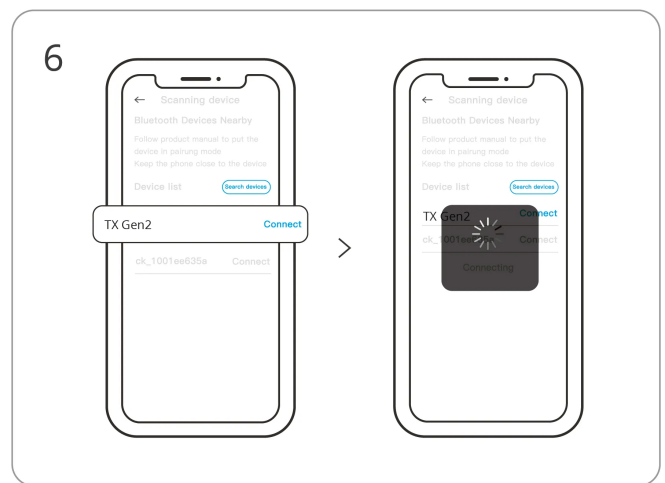
Select "Add Device"



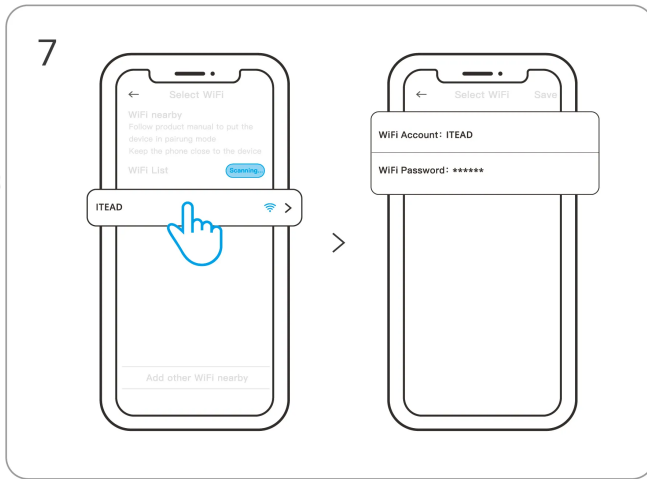
Long press the button for 5 seconds



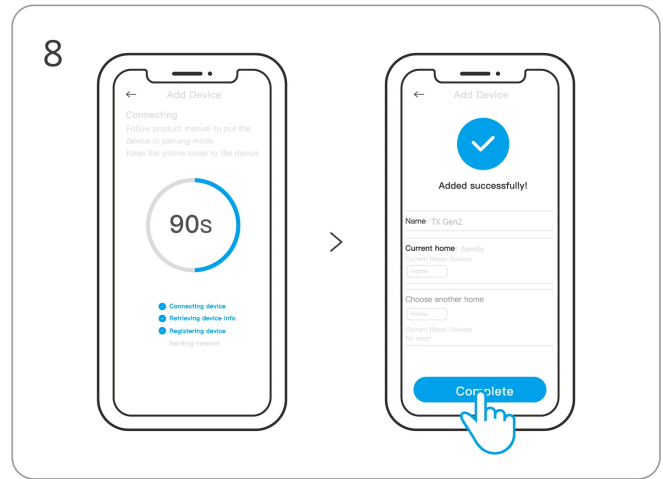
Check Wi-Fi LED indicator flashing status
(Two short and one long)



Search for the device and start connecting



Select the "Wi-Fi" network and enter the password



Device "Added completely"

Factory Reset

Reset the device to factory settings by "Delete device" in the eWeLink App.

FCC compliance statement

1. This device complies with part 15 of the FCC Rules. Operation is subject to the following two conditions:

- (1) This device may not cause harmful interference, and
- (2) This device must accept any interference received, including interference that may cause undesired operation.

2. Changes or modifications not expressly approved by the party responsible for compliance could void the user's authority to operate the equipment.

Note: This equipment has been tested and found to comply with the limits for a Class B digital device, pursuant to part 15 of the FCC Rules. These limits are designed to provide reasonable protection against harmful interference in a residential installation. This equipment generates, uses and can radiate radio frequency energy and, if not installed and used in accordance with the instructions, may cause harmful interference to radio communications. However, there is no guarantee that interference will not occur in a particular installation. If this equipment does cause harmful interference to radio or

television reception, which can be determined by turning the equipment off and on, the user is encouraged to try to correct the interference by one or more of the following measures:

- Reorient or relocate the receiving antenna.
- Increase the separation between the equipment and receiver.
- Connect the equipment into an outlet on a circuit different from that to which the receiver is connected.
- Consult the dealer or an experienced radio/TV technician for help.

FCC Radiation Exposure statement:

This equipment complies with FCC radiation exposure limits set forth for an uncontrolled environment.

This equipment should be installed and operated with a minimum distance of 20 cm between the radiator and your body.

This transmitter must not be co-located or operating in conjunction with any other antenna or transmitter.

EU Declaration of Conformity

Hereby, Shenzhen Sonoff Technologies Co., Ltd. declares that the radio equipment type T6-1C-120M, T6-2C-120M, T6-3C-120M are in compliance with Directive 2014/53/EU. The full text of the EU declaration of conformity is available at the following internet address:

<https://sonoff.tech/compliance/>

For CE Frequency

EU Operating Frequency Range:

Wi-Fi: 802.11 b/g/n20 2412–2472 MHz

BLE: 2402–2480 MHz

EU Output Power:

Wi-Fi 2.4G \leq 20dBm

BLE \leq 20dBm

WEEE Disposal and Recycling Information



WEEE Disposal and Recycling Information All products bearing this symbol are waste electrical and electronic equipment (WEEE as in directive 2012/19/EU) which should not be mixed with unsorted household waste. Instead, you should protect human health and the environment by handing over your waste equipment to a designated collection point for the recycling of waste electrical and electronic equipment, appointed by the government or local authorities. Correct disposal and recycling will help prevent potential negative consequences to the environment and human health. Please contact the installer or local authorities for more information about the location as well as terms and conditions of such collection points.

Warning

Under normal use of condition, this equipment should be kept at a separation distance of at least 20 cm between the antenna and the body of the user.

Dans des conditions normales d' utilisation, cet équipement doit être maintenu à une distance d' au moins 20 cm entre l' antenne et le corps de l' utilisateur.

| Scatola | Scatola | Manuale | Borsa | Borsa |
|---|---------|---------|----------|----------|
| PAP 20 | PAP 21 | PAP 22 | CPE 7 | LDPE 4 |
| Carta | Carta | Carta | Plastica | Plastica |
| RACCOLTA DIFFERENZIATA | | | | |
| Verifica le disposizioni del tuo Comune. | | | | |
| Separa le componenti e conferiscile in modo corretto. | | | | |



Manufacturer: Shenzhen Sonoff Technologies Co., Ltd.

Address: 3F & 6F, Bldg A, No. 663, Bulong Rd, Shenzhen, Guangdong, China

ZIP code: 518000

Service email: support@itead.cc

Website: sonoff.tech

Made in China



Points de collecte sur www.quefairedemesdechets.fr
Privilégiez la réparation ou le don de votre appareil !

