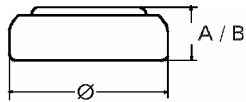


Data Sheet

Type Number 393
Designation IEC SR 48
System Silver oxide / Zinc /
 KOH - Electrolyte



Nominal Voltage 1,55 V
Typical Capacity C 65 mAh
 Load 13 kOhm, at 20°C down to 1.3 V

Weight (approx.) 1,08 g
Volume 0,24 ccm
Coding..... Manufacturing Month/Year
 by Letter Code

Temperature Ranges min max.
 Storage -10°C 65 °C
 Discharge -10°C 65°C

Dimensions min max.
 Diameter (A) 7,55 7,9
 Height (B) 5 5,4

Segment Watch / High Drain

Main Applications Watch
 Photo
 Electronic

Typical Capacities (at 20°C)

| Discharge Type | Load | End Voltage: | 1.3 V |
|---|--------------------|---|--------------------|
| Continuous 24h/d,7d/w Current [µA]: | 13000 Ω 120 | Time: Capacity [mAh]: Energy [MWh]: | 540 h 65 100 |

