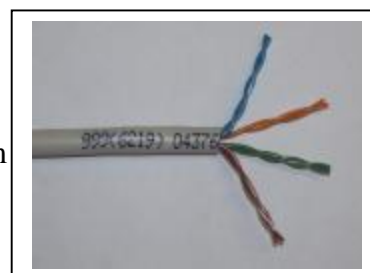


**Compliant to ISO 11801, TIA/EIA 568-C.2 and EN50173
EC Verified**

Material, Construction & Packaging

Conductor	24 AWG solid bare copper (0.511mm)
Insulation	Polyethylene
Pairs Colours	1. Blue/White-Blue 2. Green/White-Green 3. Orange/White-Orange 4. Brown/White-Brown
Sheath	PVC Nominal OD 5.2 mm
Weight & Packaging	16 Kg/500m reel 11 Kg/305m box
Fire Safety Rating	IEC 60332-1
Temperature Range	Installation 0° to 50° Operational -20° to +70°.



Transmission Characteristics

Frequency M/Hz	Attenuation dB/100m	Next dB	PSNext dB	PSELFEXT dB
1	2.1	65.3	62.3	60.8
4	4.3	56.3	53.3	48.7
10	6.6	50.3	47.3	40.8
16	8.2	47.3	44.3	36.7
20	9.2	45.8	42.8	34.7
31.25	11.8	42.9	39.9	30.9
62.5	17.1	38.4	35.4	24.8
100	22	35.3	32.3	20.8

Electrical Characteristics at 20°

DC Resistance	93.8 Ohms/Km max
Resistance Unbalance	2% max
Mutual Capacitance	56 nf/Km max
Capacitance Unbalance	1000 pF/Km max
Skew	450 ns/Km max
Velocity of Propagation	68% (0.68 x 3x10 ⁸ m/s)
Characteristic Impedance	100 Ohms ±% 15% 1.0 Mhz – 100Mhz