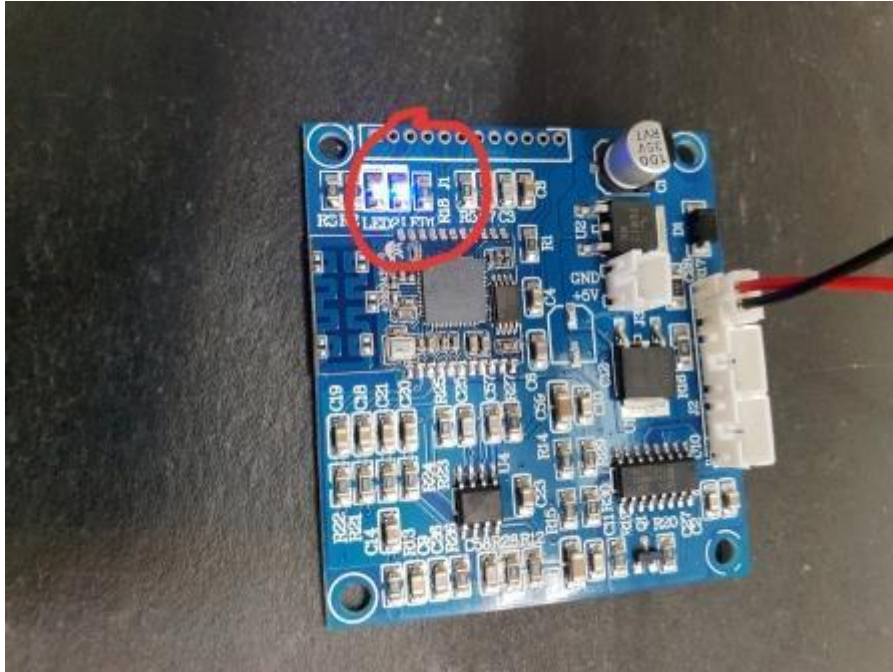
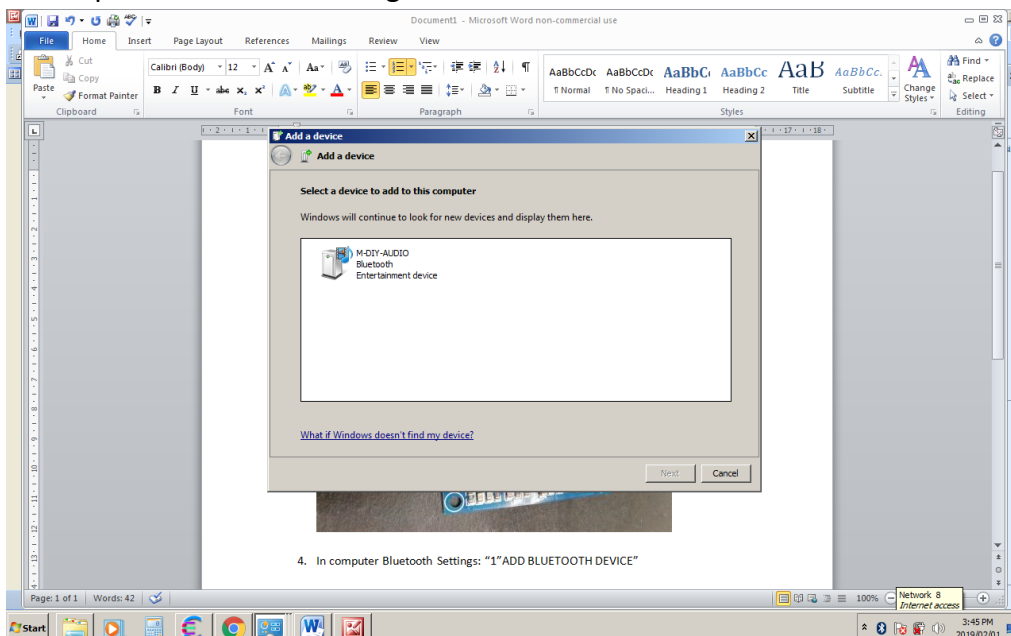


# DGM BLUETOOTH MODULE STEREO NEW-SETUP

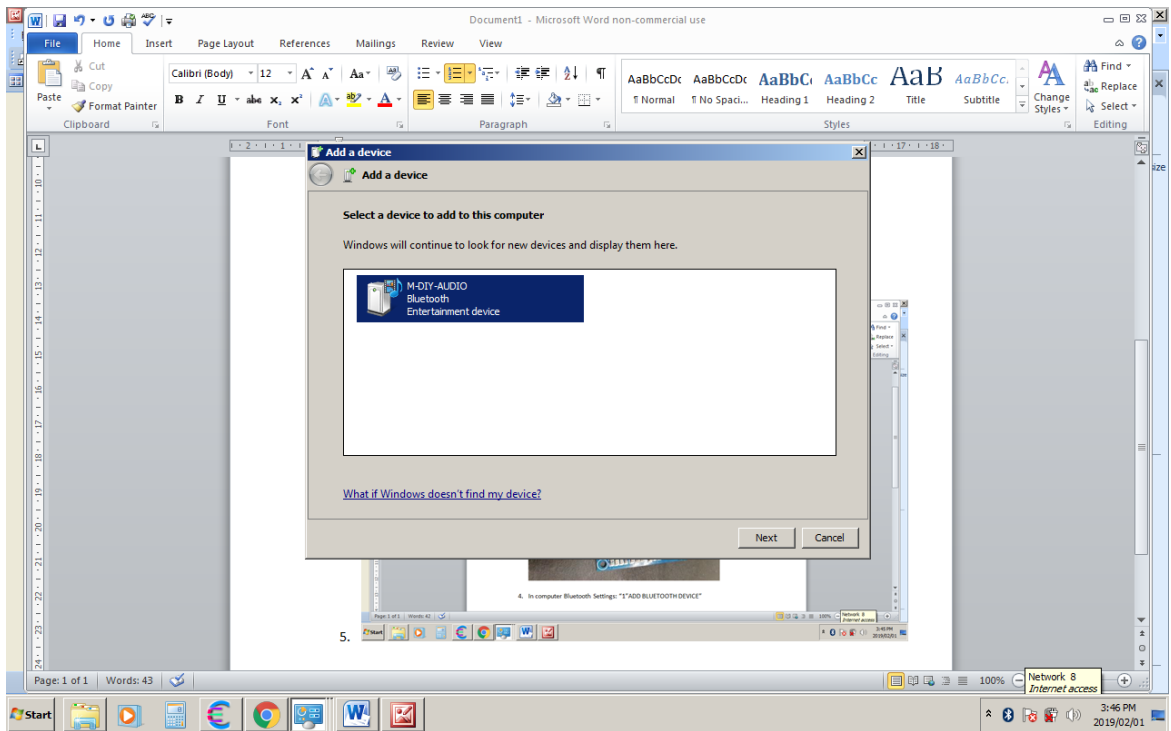
1. Turn ON computer BLUETOOTH
2. Connect correct supply voltage to DGM Bluetooth Module [7-30v DC]
3. LED 1 and LED 2 on DGM Bluetooth Module must oscillate "on off"



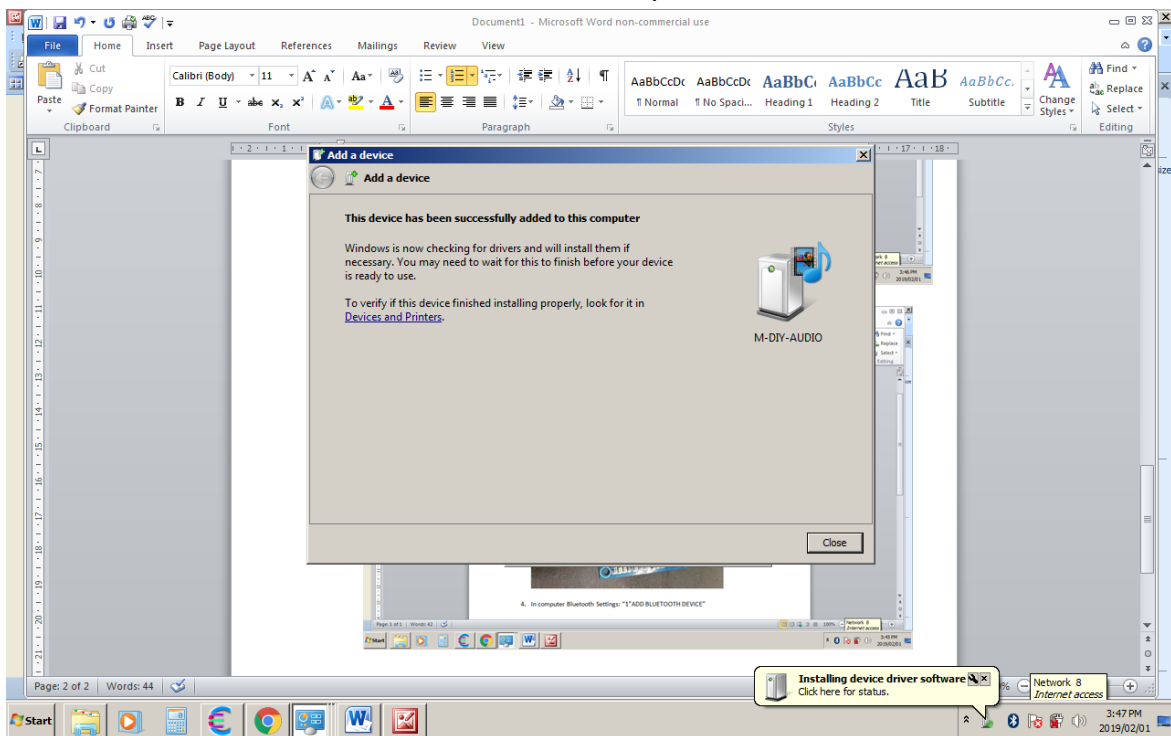
4. In computer Bluetooth Settings: "1" ADD BLUETOOTH DEVICE"

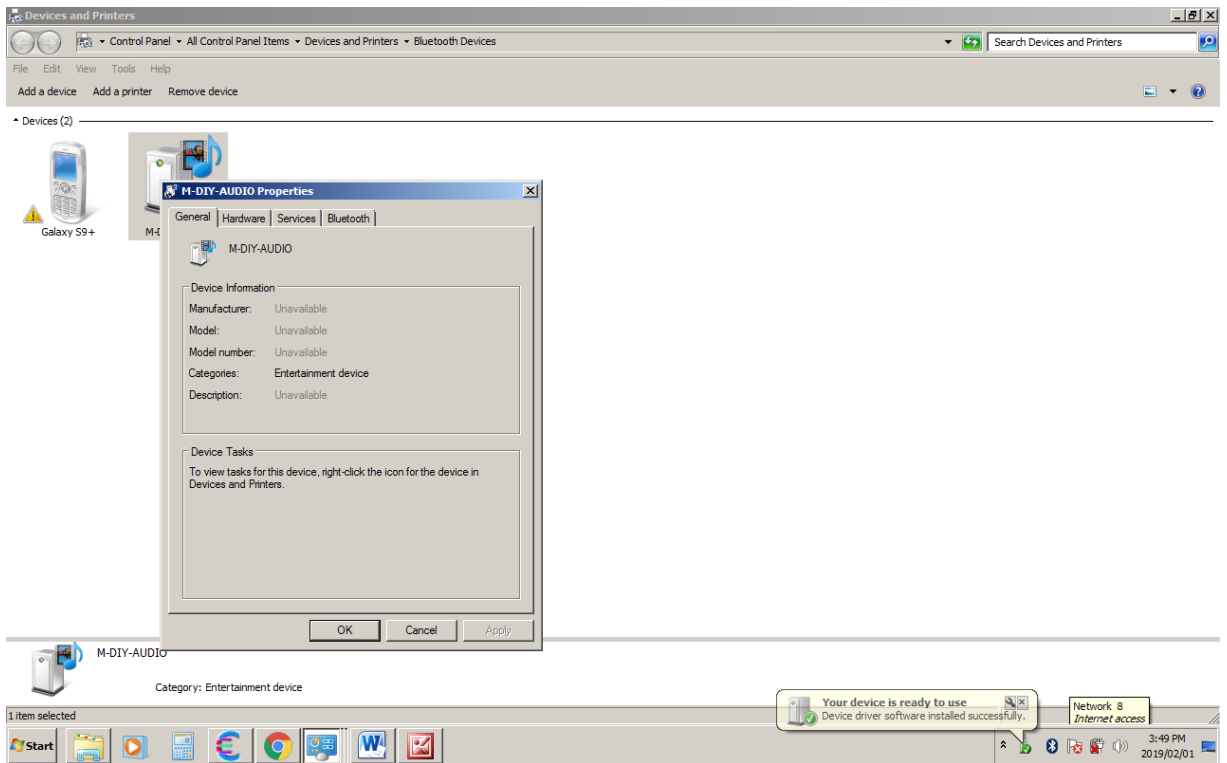


5. Select the device called " M-DIY-AUDIO"

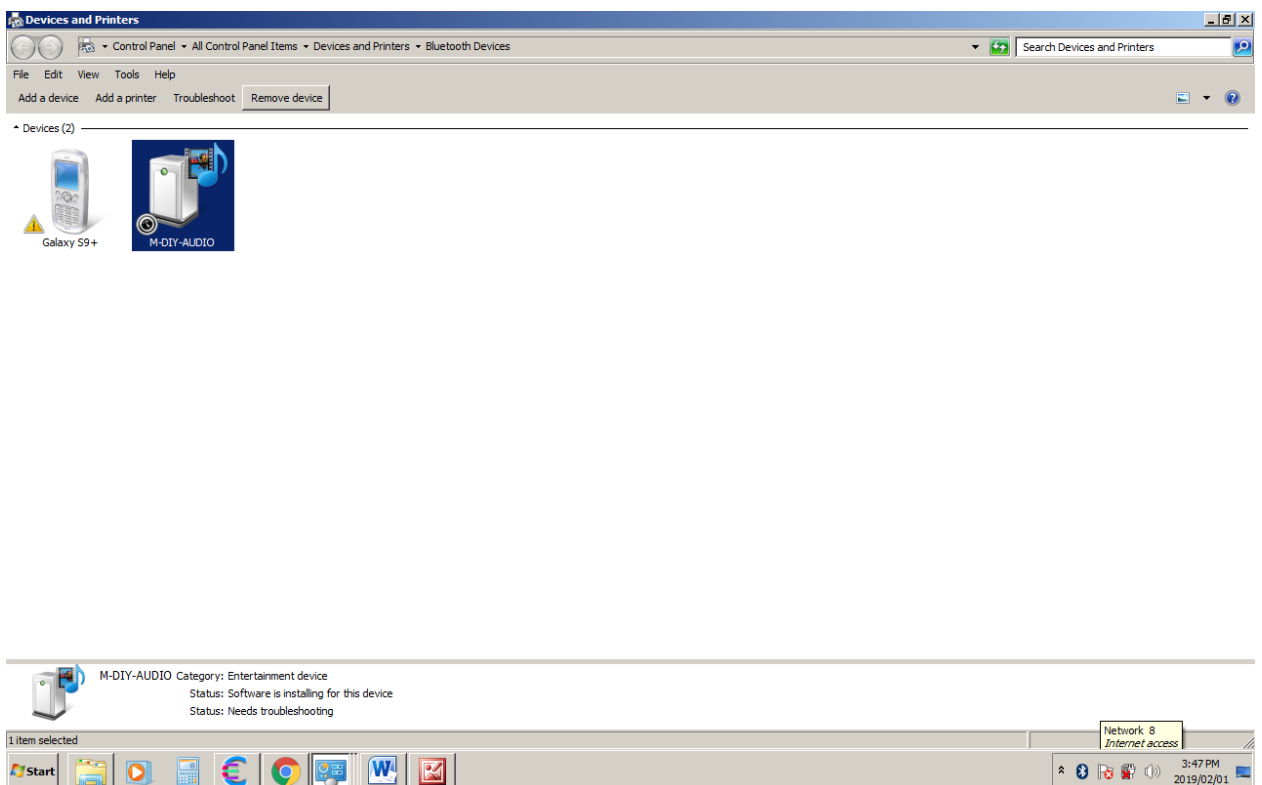


6. Wait for the information bar " Your device is ready to use"





## 7. Double CLICK on the M-DIY-AUDIO



8. CLICK on the Microphone Icon- the following screen will come up

