



*Quality Products. Service Excellence.*

## Diecast Aluminum Enclosures *1550 Series*

Standard & Water-Tight Options



### Features

- Rugged, diecast aluminum alloy (tough yet easy to machine), electronic instrument enclosure.
- Available in natural vibra finish OR in light textured, black powder paint.
- Unpainted version is vibra finished for a smooth surface with no sharp edges.
- Painted version is painted with tough satin black polyester powder paint for a lasting finish, even after machining. Black screws are included to enhance the assembled appearance.
- Lap joint construction protection against access of dust and splashing water. Also provides for improved EMI/RFI shielding. When water-tight gaskets are installed,
- Four M3.5 x 0.6 x 12 mm long stainless steel, Philips head, machine screws secure lid - into factory tapped holes.
- Designed to meet IP 54 without a gasket or IP66 with a gasket. IP67 upgraded gaskets are available.
- No internal ribs for easy installation of connectors without interference or additional milling.
- Low side wall draft angle (2 degrees or less) for easy P.C. board mounting.
- Add 0.16" (4 mm) to enclosure depth for lid

### Replacement Hardware

- Replacement screws for the unpainted series - **1550MS100** - Package of 100
- Replacement screws for the black series - **1550MS100BK** - Package of 100

### Upgrade To Tamper-Resistant (Torx With Pin) Hardware

- Tamper-resistant screws for the unpainted series - **1550MS50T**- Package of 50
- Tamper-resistant screws for the black series -**1550MS50TBK** - Package of 50
- Driver bit for tamper-proof screws - **SCDRIVET15-B**

### Accessory Gasket Kits

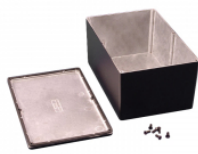
- **IP66**
  - Each kit includes two pre-formed economical EVA foam gaskets.
  - Gaskets include adhesive backing for easy installation.
  - Allows enclosure to be machined and/or painted first and gasketed later
  - Gasket is applied to the lid (see photo example below).
  - Designed to meet IP 66 (with properly installed gasket and lid screws torqued at 55 cN.m).
- **IP67 Upgrade**
  - Each kit includes two pre-formed silicone gaskets.
  - Gaskets include adhesive backing for easy installation.
  - Allows enclosure to be machined and/or painted first and gasketed later.
  - Gasket is applied to the lid (see photo example below).
  - Tested to meet IP 67 (with properly installed gasket and lid screws torqued at 55 cN.m).

**Photo Features (click to enlarge):**

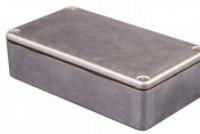


Available in natural (plain aluminum) finish or with black powder coat.

All sizes available with or without water-tight gaskets. Gasket shipped loose inside enclosure (shown installed).



Smooth internal walls make installing connectors easy.



Shown here with gasket installed.



Gasket retainer on the lid makes for accurate, steady positioning of critical seals.



IP66 or IP67 gasket kits with adhesive back also sold separately.

Without Gasket Included		Includes IP66 Gasket					Replacement & Upgrade	
Part No.	Part No.	Part No.	Part No.			Enclosure Depth	Gasket Kits (Sold As Pairs)	
Unpainted	Black	Unpainted	Black	Length	Width	(Less Lid)	IP66	IP67
1550Q	1550QBK	1550WQ	1550WQBK	2.36	2.17	1.02	1550QEGASKET	1550QSGASKET
1550P	1550PBK	1550WP	1550WPBK	3.15	2.17	0.83	1550PEGASKET	1550PSGASKET
1550A	1550ABK	1550WA	1550WABK	3.50	1.38	1.02	1550AEGASKET	1550ASGASKET
1550B	1550BBK	1550WB	1550WBBK	4.51	2.52	1.02	1550BEGASKET	1550BSGASKET
1550D	1550DBK	1550WD	1550WDBK	4.51	2.52	2.01	1550BEGASKET	1550BSGASKET
1550C	1550CBK	1550WC	1550WCBK	4.53	3.54	2.01	1550CEGASKET	1550CSGASKET
1550M	1550MBK	1550WM	1550WMBK	4.74	3.95	1.23	1550MEGASKET	1550MSGASKET
1550K	1550KBK	1550WK	1550WKBK	5.51	4.02	2.85	1550KEGASKET	1550KSGASKET
1550L	1550LBK	1550WL	1550WLBK	6.51	5.02	2.85	1550LEGASKET	1550LSGASKET
1550E	1550EBK	1550WE	1550WEBK	6.73	4.76	2.01	1550EEGASKET	1550ESGASKET
1550F	1550FBK	1550WF	1550WFBK	6.73	4.76	3.98	1550EEGASKET	1550ESGASKET
1550G	1550GBK	1550WG	1550WGBK	8.74	5.75	2.01	1550GEGASKET	1550GSGASKET
1550H	1550HBK	1550WH	1550WHBK	8.74	5.75	3.98	1550GEGASKET	1550GSGASKET
1550N	1550NBK	1550WN	1550WNBK	9.85	9.85	3.82	1550NEGASKET	1550NSGASKET
1550J	1550JBK	1550WJ	1550WJBK	10.83	6.89	2.46	1550JEGASKET	1550JSGASKET

Notes: Add 0.16" (4 mm) to enclosure depth for lid. Available in natural vibra finish OR in light textured, black powder paint

© 2019. Hammond Manufacturing Ltd. All rights reserved.