



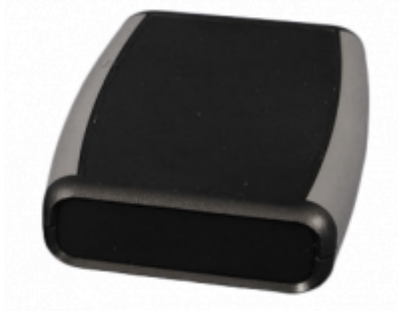
*Quality Products. Service Excellence.*

## ABS Plastic Hand Held Enclosures 1553 Series

Soft Sided, Ergonomic Comfort, Battery Compartments

### Key Features

- Ergonomically designed for hand-held comfort.
- Choice of five sizes and six color combinations.
- Choice of two versions in the three larger sizes (ie...with or without battery door & compartment)
- Molded in general purpose ABS plastic with an overmold, soft plastic grip.
- Top cover is recessed for membrane display or keypad.
- P.C. board standoffs are molded into case (see drawings or photos for more details).
- Includes removable front panel (for easy modifications) and assembly hardware (except for smallest 1553A units).
- Battery door & compartment version includes 4 battery clips (for 2 - AA batteries) and a 9 volt (PP3) battery clip.
- Gray 1553 series enclosures include nickel plated screws. All other color use black screws. Refer to product datasheets for correct part numbers.
- For similar enclosures designed for water-tight applications, try series **1553W**



### Photo Features

Perfect for handheld use.

Battery version comes with clips for AA for 9V.



### Additional Color Combinations Available



## Accessories



### ProtoBoard Printed Circuit Boards

- High quality FR4 glass epoxy board
- Specifically designed to fit enclosures shown in the table below
- Mounting screws included
- Lead free etched copper PCB with a flux coating for easy soldering
- 0.042" holes drilled on 0.1" centers
- For more information link to the BPS (BusBoard Prototype Systems) website [www.busboard.com](http://www.busboard.com)

**1553BPCB** - works with 1553 sizes "B" and "C"

**1553DBPCB** - works with 1553 size "D"

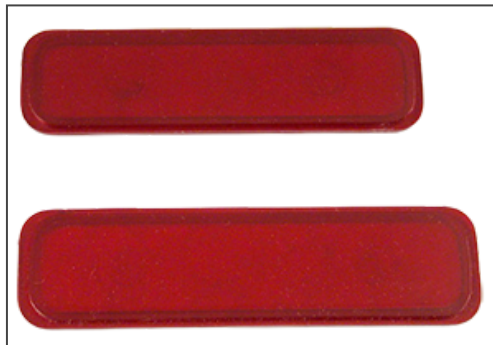


### Belt/ Pocket Clip Option

- Molded from touch nylon
- Includes 2 nylon screws (insulated to avoid interference)
- Mounting Template Included (user drilling required)

**1599CLIP** (black)

**1599CLIPGY** (gray)



### IR End Panels

- Replaces existing front plastic panel.
- Dark red plastic filter (transparent to IR).

For all 1553 "B" sized enclosures - Part Number **1553BIR-BULK**

For all 1553 "D" sized enclosures - Part Number **1553DIR-BULK**

## Without Battery Doors & Compartments

Part Number	Enclosure Color	Overmold Color	Overall Dimensions			Max. P.C. Board	
			Length	Width	Depth	Length	Width
<b>1553AABK</b>	Black	Gray	2.95	1.97	0.67	2.73	1.65
<b>1553AAGY</b>	Grey	Gray	2.95	1.97	0.67	2.73	1.65
<b>1553ABK</b>	Black	Gray	3.94	2.41	0.67	3.73	1.90
<b>1553AGY</b>	Grey	Gray	3.94	2.41	0.67	3.73	1.90
<b>1553BBK</b>	Black	Gray	4.62	3.11	0.95	4.30	2.40
<b>1553BGY</b>	Grey	Gray	4.62	3.11	0.95	4.30	2.40
<b>1553BBKBK</b>	Black	Black	4.62	3.11	0.95	4.30	2.40
<b>1553BTBUBK</b>	Trans Blue	Black	4.62	3.11	0.95	4.30	2.40
<b>1553BRDBK</b>	Red	Black	4.62	3.11	0.95	4.30	2.40
<b>1553BYLBK</b>	Yellow	Black	4.62	3.11	0.95	4.30	2.40
<b>1553CBK</b>	Black	Gray	4.62	3.11	1.30	4.30	2.40

Part Number	Enclosure	Overmold	Overall Dimensions			Max. P.C. Board	
	Color	Color	Length	Width	Depth	Length	Width
1553CGY	Grey	Gray	4.62	3.11	1.30	4.30	2.40
1553DBK	Black	Gray	5.80	3.50	0.98	5.48	2.65
1553DGY	Grey	Gray	5.80	3.50	0.98	5.48	2.65
1553DBKBK	Black	Black	5.80	3.50	0.98	5.48	2.65
1553DTBUBK	Trans Blue	Black	5.80	3.50	0.98	5.48	2.65
1553DRDBK	Red	Black	5.80	3.50	0.98	5.48	2.65
1553DYL BK	Yellow	Black	5.80	3.50	0.98	5.48	2.65

### With Battery Doors & Compartments

Part Number	Enclosure	Overmold	Overall Dimensions			Max. P.C. Board	
	Color	Color	Length	Width	Depth	Length	Width
1553BBKBAT	Black	Gray	4.62	3.11	0.95	3.08	2.40
1553BGYBAT	Grey	Gray	4.62	3.11	0.95	3.08	2.40
1553BBKBKBAT	Black	Black	4.62	3.11	0.95	4.30	2.40
1553BTBUBKBAT	Trans Blue	Black	4.62	3.11	0.95	4.30	2.40
1553BRDBKBAT	Red	Black	4.62	3.11	0.95	4.30	2.40
1553BYLBKBAT	Yellow	Black	4.62	3.11	0.95	4.30	2.40
1553CBKBAT	Black	Gray	4.62	3.11	1.30	4.30	2.40
1553CGYBAT	Grey	Gray	4.62	3.11	1.30	4.30	2.40
1553DBKBAT	Black	Gray	5.80	3.50	0.98	4.20	2.65
1553DGYBAT	Grey	Gray	5.80	3.50	0.98	4.20	2.65
1553DBKBKBAT	Black	Black	5.80	3.50	0.98	4.20	2.65
1553DTBUBKBAT	Trans Blue	Black	5.80	3.50	0.98	4.20	2.65
1553DRDBKBAT	Red	Black	5.80	3.50	0.98	4.20	2.65
1553DYL KBAT	Yellow	Black	5.80	3.50	0.98	4.20	2.65

### Extra End Panels (10-packs)

Enclosure Size	Black	Gray	Red	Translucent Blue	Yellow
1553B	1553BPLBK-10	1553BPLGY-10	1553BPLRD-10	1553BPLTBU-10	1553BPLYL-10
1553C	1553CPLBK-10	1553CPLGY-10			
1553D	1553DPLBK-10	1553DPLGY-10	1553DPLRD-10	1553DPLTBU-10	1553DPLYL-10

### Extra Battery Doors (5-packs)

Enclosure Size	Black	Gray	Red	Translucent Blue	Yellow
All 1553's with battery doors	53BATDOORBK-5	53BATDOORGY-5	53BATDOORRD-5	53BATDOORTBU-5	53BATDOORYL-5

Data subject to change without notice