



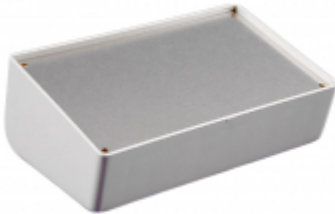
Quality Products. Service Excellence.

## Plastic Console Enclosures 1595 Series

ABS Plastic Body w/ Aluminum Cover Plate

### Features

- Desk top electronic instrument enclosure, ideally suited for mounting printed circuit boards.
- Standard versions are molded from flame retardant ABS plastic (material carries a UL flammability rating of 94V-0).
- Economy versions are molded from general purpose ABS plastic (UL94-HB).
- Two piece construction. Integral card guides accept 1.5 mm (0.062") P.C. cards. 0.20" diameter stand off bosses in the base for supporting various subassemblies.
- Integral brass bushings with four M3 x 0.5" x 8 mm (0.31") Phillips pan head screws hold recessed panel into sloping front of case.
- 1.01 mm (0.04") aluminum panel with paper on one side.
- Four self-adhesive feet included.
- Stocked in black and grey.



Available in gray or black.

Includes plastic housing, aluminum plate, (4) adhesive feet, and (4) screws.

### Part Numbers

Part Number	Color	Width	Length	Depth (Back of Console)
1595CBK	Black	6.35	3.78	2.28
1595CGY	Gray	6.35	3.78	2.28
1595EBK	Black	8.47	5.12	2.95
1595EGY	Gray	8.47	5.12	2.95

*Data subject to change without notice*

© 2019. Hammond Manufacturing Ltd. All rights reserved.

