



## Amazon Alexa Voice Control Setup

**IMPORTANT BEFORE YOU START, YOU NEED A WORKING GATEWAY, A GMAIL ACCOUNT, AND A SMARTPHONE.  
ONLY GMAIL ACCOUNTS WORK NO OTHERS!**

**MAKE SURE ALL DEVICES HAVE BEEN SETUP AND ARE WORKING BEFORE YOU START THE VOICE SETUP.**

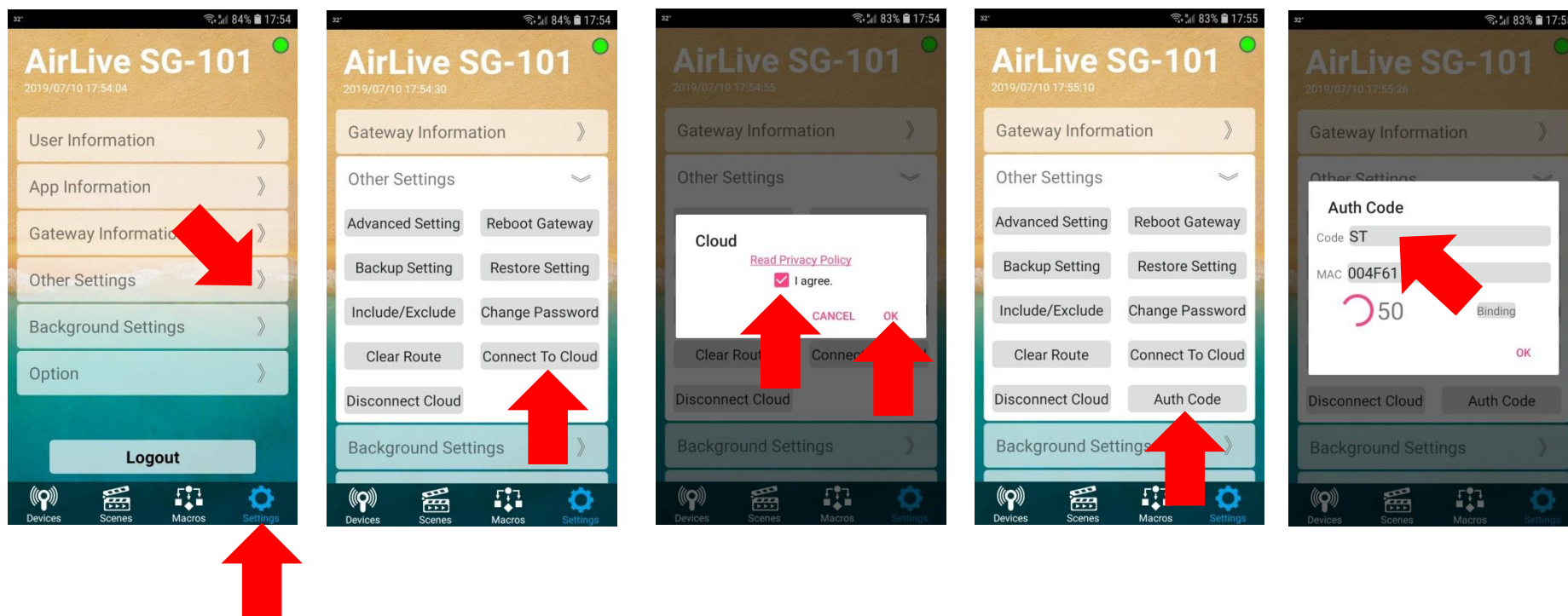
Table of Contents

- 1 Binding Gateway to AirLive Smart IoT Cloud
- 2 How to Setup Amazon Alexa

## 1 Binding the Gateway.

Make sure you Gateway has been setup correctly and is working. The white led should be burning on top the Gateway and the Time must be correctly setup in the Gateway.

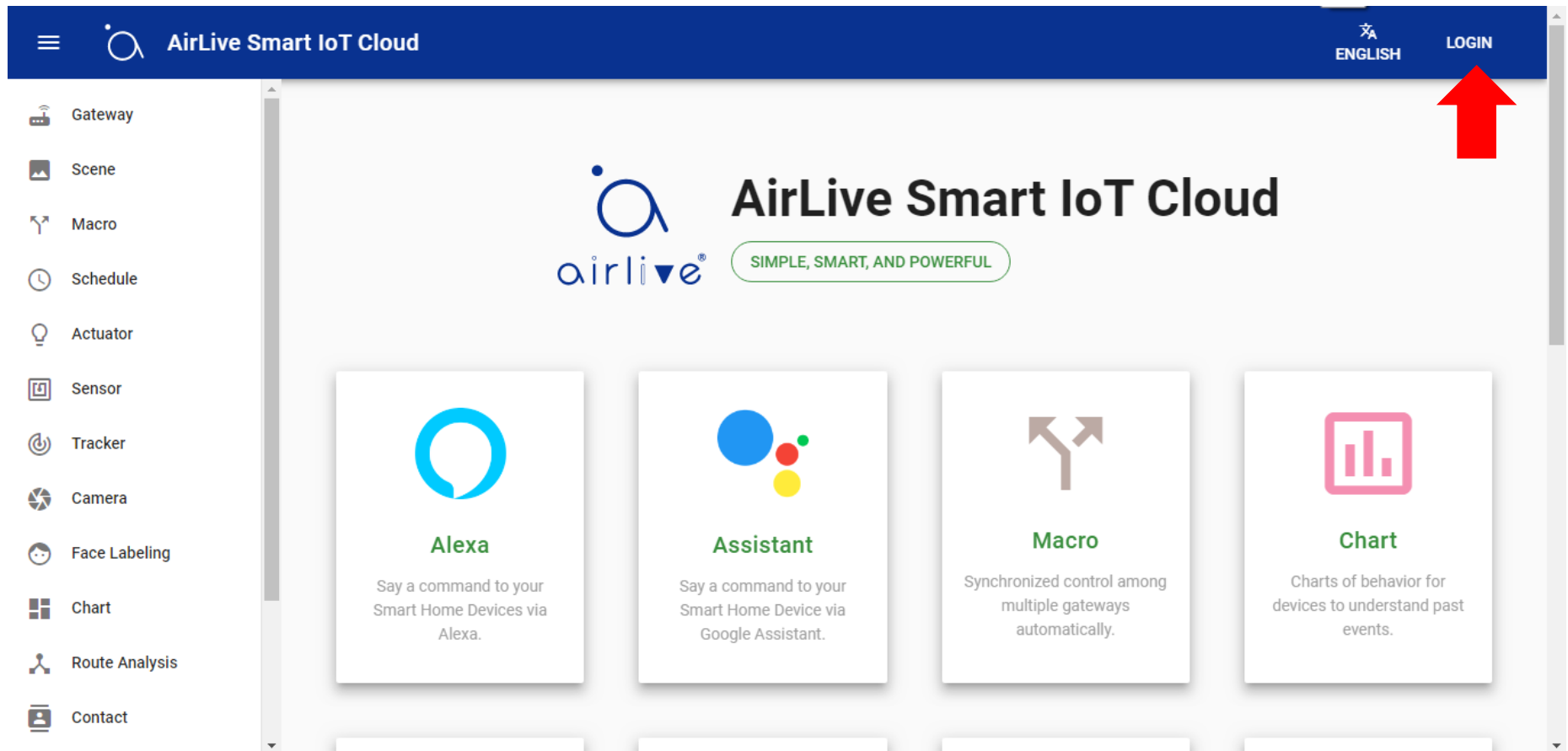
- 1 Run the AirLive SmartLife Plus APP
- 2 Go to Settings
- 3 Go to Other Settings
- 4 Click Connect to Cloud
- 5 Checkmark "I agree" and click OK
- 6 Click Auth Code
- 7 Copy the Auth code within 60 secs (to be used on the next page)



Now open a browser on your computer and Go to the following website <https://cloud.airlive.com>

**Recommend is to use the Google Chrome browser.**

1.1 Click the Login button to register. Note this MUST be a Gmail email address this SAME email address will also need to be used on your phone to make Amazon Alexa!!



ENGLISH LOGIN

Gateway  
Scene  
Macro  
Schedule  
Actuator  
Sensor  
Tracker  
Camera  
Face Labeling  
Chart  
Route Analysis  
Contact

**AirLive Smart IoT Cloud**  
SIMPLE, SMART, AND POWERFUL

**Alexa**  
Say a command to your Smart Home Devices via Alexa.

**Assistant**  
Say a command to your Smart Home Device via Google Assistant.

**Macro**  
Synchronized control among multiple gateways automatically.

**Chart**  
Charts of behavior for devices to understand past events.

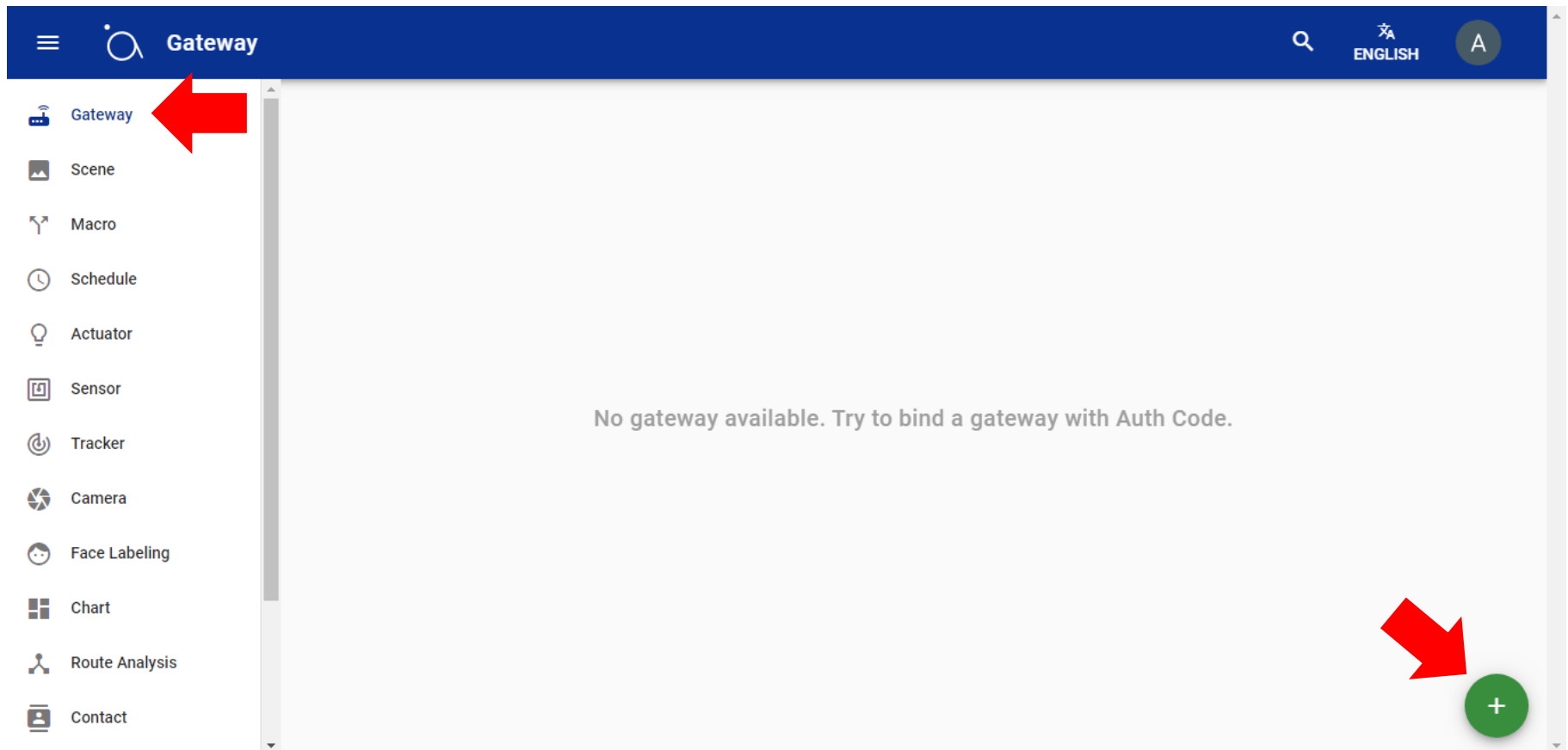
1.2. Select your email address or type in a new one. Again make sure your use the same Email address for the entire setup. Ones this is done you can start to add the Gateway to the Cloud.

1.3 Adding the Gateway to the Cloud using the Auth Code.

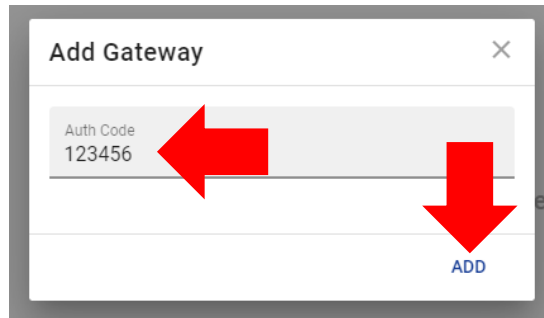
On the left handside click on Gateway in the new window which now opens click on the + to add the Gateway.

1 Click on Gateway.

2 Click on the “+” icon in the bottom right corner.



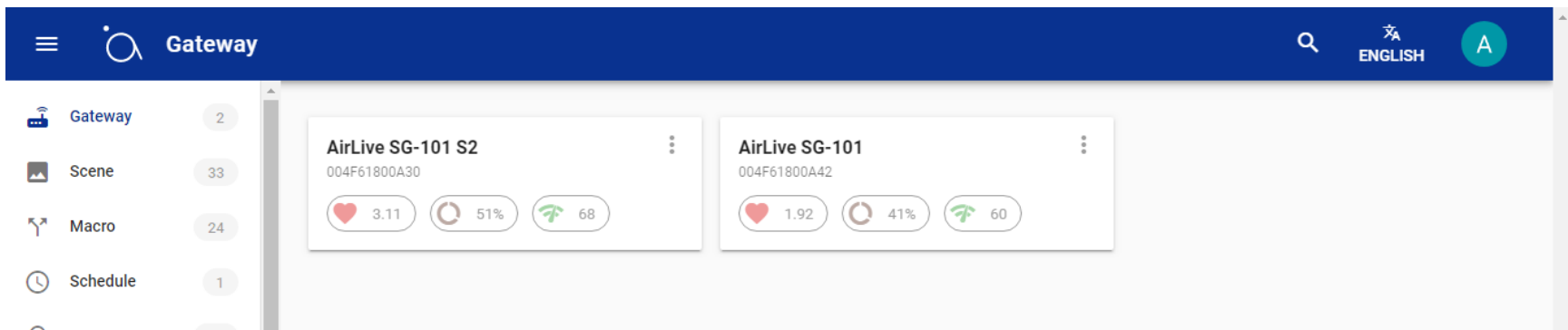
1.4 Enter the Auth code which you got from the APP and Click Add.



When the Auth Code on the AirLive Smart IoT Cloud Website it Show “Invalid”

1. Check your gateway if it is connected to the internet. (White light on the back of gateway should be on.)
2. Check the time of the gateway if it is correct
3. Disconnect the cloud and connect to the cloud before getting Authcode, After 5 mins then try again.

1.5 Your Gateway has now been added, and your devices will also show. In this example it will show Actuators and Sensors which are connected.



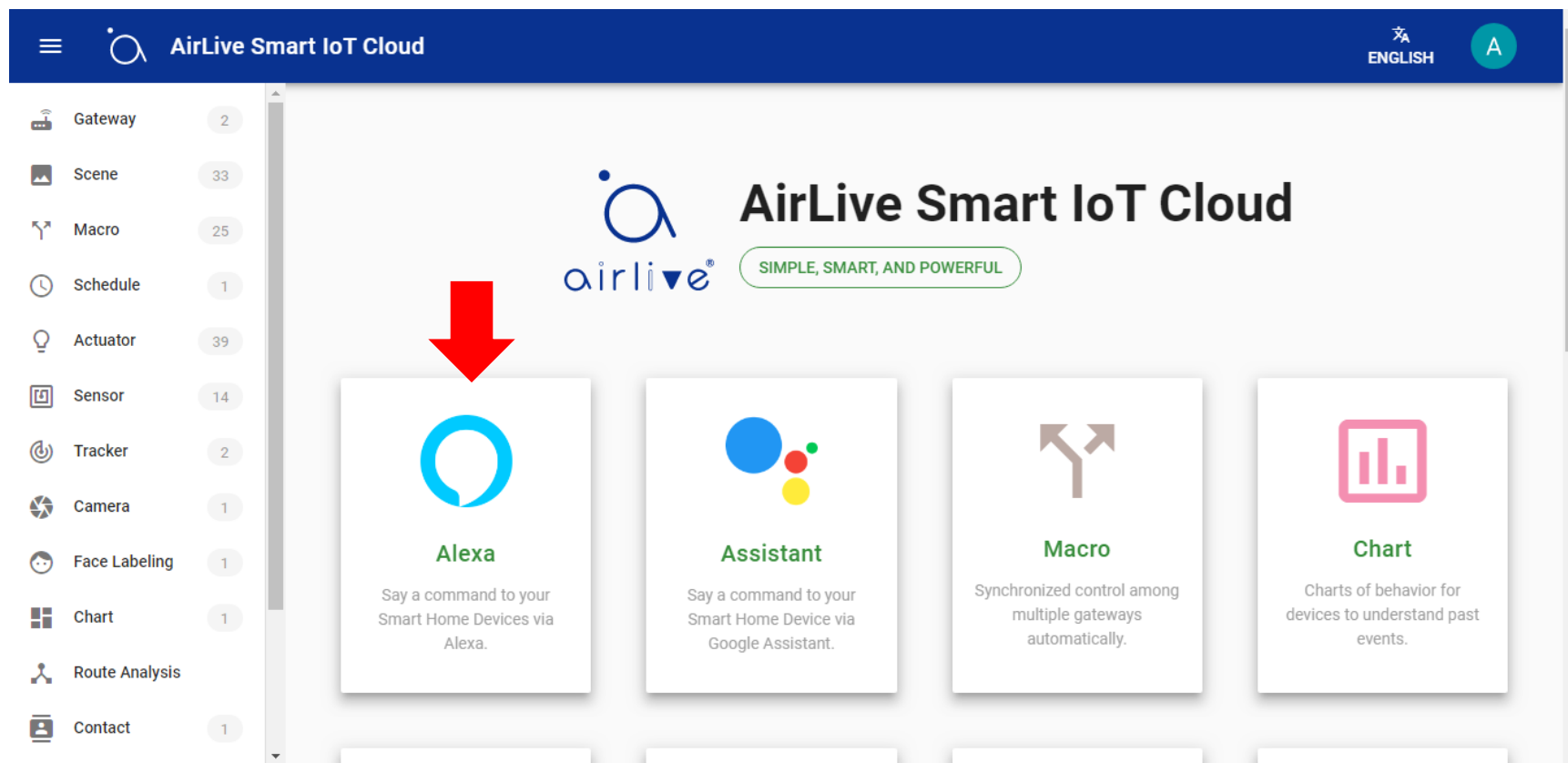
You are now ready to setup the Voice Control.

## 2. How to Setup Amazon Alexa

To setup Amazon Alexa using Option 1 please make sure you have already setup your Alexa Speaker and use the same Email account as was used for AirLive Smart IoT Cloud!

1 On the AirLive Smart IoT Cloud main page Click on the Alexa logo.

2 You will be redirected to the Amazon home page.



A new window will open on the Amazon website showing the AirLive Smart IoT Cloud Skill. First make sure you have setup your Alexa Speaker already.

1 Login to Amazon using the SAME account as was used for the AirLive Smart IoT Cloud. Click “Sign In”.

2 A new smaller window will pop up. Enter your account details again using the same account as was used for AirLive Smart IoT Cloud.

The screenshot shows the Amazon website interface. At the top, the Amazon logo is on the left, and a search bar is in the center. On the right, there's a promotional banner for a \$5 USD discount on the first order. Below the search bar, navigation links for 'Departments', 'Today's Deals', 'Your Amazon.com', 'Gift Cards', 'Help', 'Registry', and 'Sell' are visible. The user is logged out, with 'Hello, Sign in' and 'Account & Lists' links. A 'Cart' icon shows 0 items. The main content area features the 'AirLive Smart IoT Cloud' skill by Kerry, with a 'Free to Enable' badge and two example voice commands: 'Alexa, turn on my light.' and 'Alexa, turn on Party mode.' Below this is a 'Description' section with 8 steps for using the skill. On the right side, a 'Sign in' button is highlighted with a red arrow, and a 'Get this Skill' section contains a 'Sign In' button, also highlighted with a red arrow. A 'Sign-In' modal window is open, showing fields for 'Email (phone for mobile accounts)' and 'Password', a 'Sign-In' button, and a 'Create your Amazon account' button. A red arrow points to the 'Sign-In' button in the modal. At the bottom of the modal, there are links for 'Conditions of Use', 'Privacy Notice', and 'Help', and a copyright notice for 1996-2019.

amazon

All

Get \$5 USD off your first order

EN Hello, Sign in Account & Lists Orders Cart

Deliver to Taiwan Departments Today's Deals Your Amazon.com Gift Cards Help Registry Sell

Alexa Skills For Your Smart Home Games and Trivia Lifestyle Your Skills Getting Started Help

Alexa Skills > Smart Home

**AirLive Smart IoT Cloud**  
by Kerry  
Rated: Guidance Suggested  
☆☆☆☆☆ 0  
Free to Enable

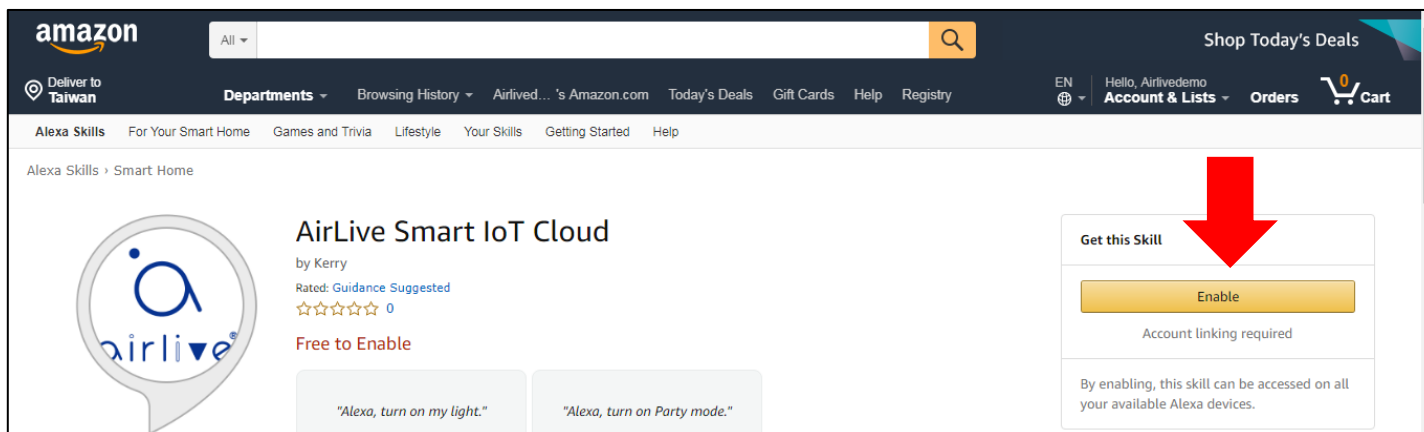
"Alexa, turn on my light."  
"Alexa, turn on Party mode."

**Description**  
How to use this skill:  
1. Get an AirLive SG-101 Gateway and actuators devices ready. For more information about AirLive devices please go to h  
2. Sign into AirLive Smart IoT Cloud with <https://cloud.airlive.com>  
3. Bind at least one Gateway into your AirLive Smart IoT Cloud account.  
4. Enable this skill.  
5. Account link with AirLive Smart IoT Cloud account in step 2.  
6. Add some scenes you wanted. (Optional)  
7. Discover your devices in the Alexa app/webpage by going to Smart Home and you will see your devices / scenes.  
8. Sav "Alexa. turn on/off <device name> / <aroup name>" to Alexa to control.

**Sign-In**  
Email (phone for mobile accounts)  
Password [Forgot your password?](#)  
Sign-In  
By continuing, you agree to Amazon's [Conditions of Use](#) and [Privacy Notice](#).  
 Keep me signed in. [Details](#)  
New to Amazon?  
[Create your Amazon account](#)  
[Conditions of Use](#) [Privacy Notice](#) [Help](#)  
© 1996-2019, Amazon.com, Inc. or its affiliates

After signing into to Amazon you will have the option to Enable the Skill. This is needed for Voice Control for Alexa.

### 1 Click Enable at Get this Skill

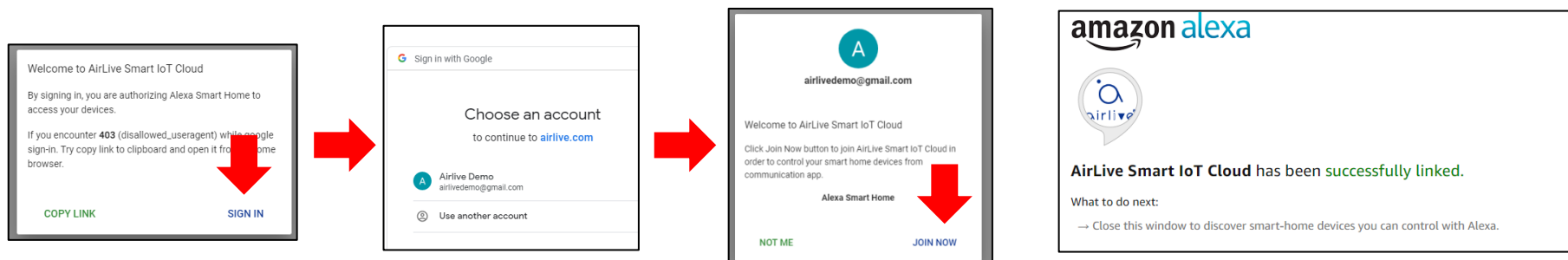


The Skill will now be enabled and linked to your Gateway, note that again when are asked to sign in to use the same account as was used to AirLive Smart IoT Cloud.

1 Click on "Sign In".

2 Select the SAME account as was used for AirLive Smart IoT Cloud.

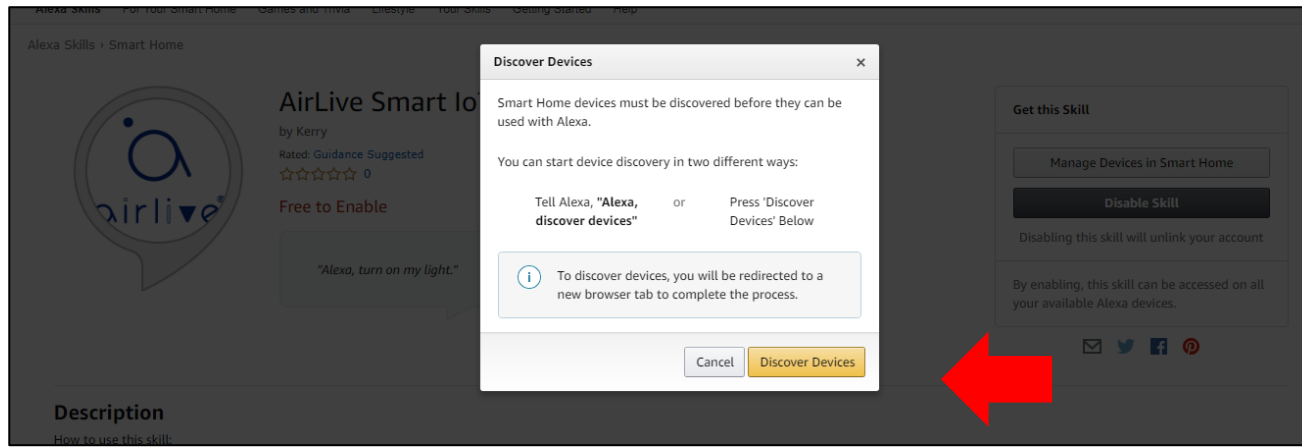
3 Click on "Join Now". Alexa has now been successfully linked to your Gateway.



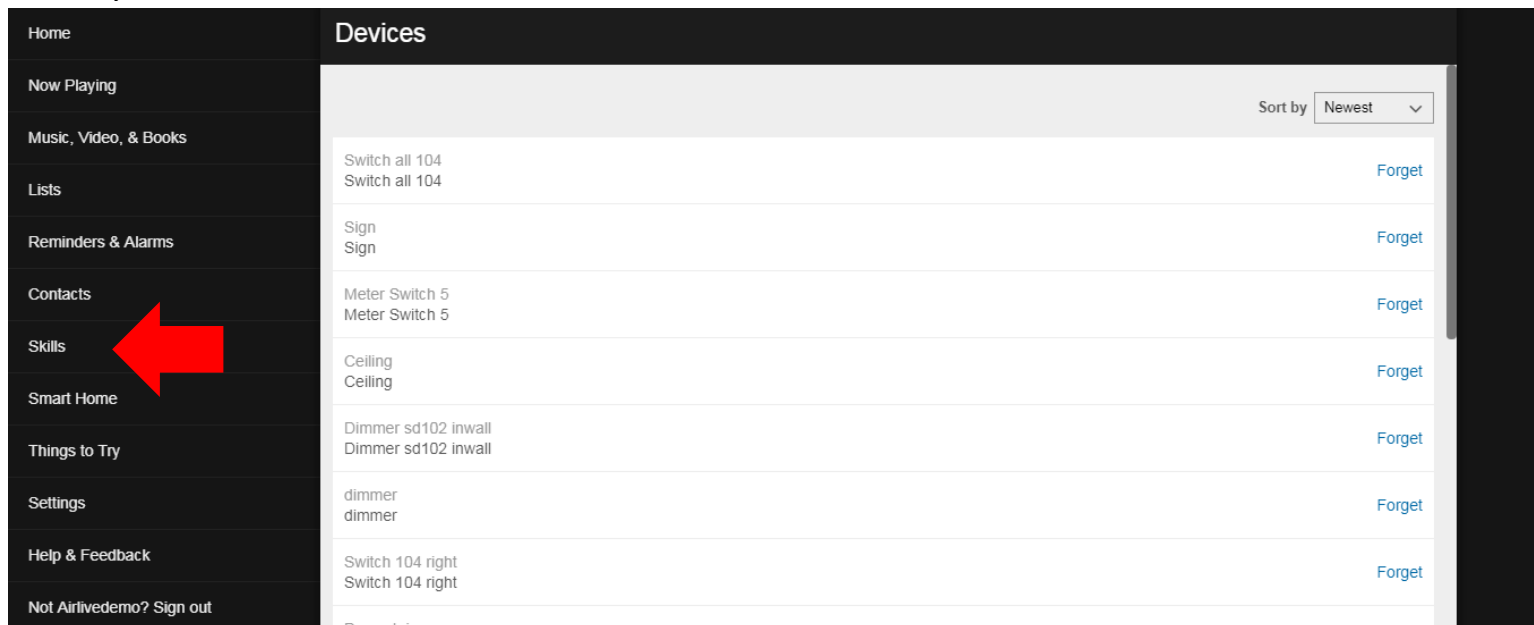


After closing the above window a new window will open, when following the Amazon instructions it will allow Alexa to search your devices which are connected to the Gateway.

1 Click on “Discover Devices” to let Alexa search, follow the Amazon instructions.



Amazon also mentioned a new browser page will open; this is the Amazon Alexa Setup page. Go to Smart Home to see your connected Z-Wave devices.



To control your devices please use the following Alexa Commands.

## Alexa Smart Home Skill Command list

### Discover New Devices

"Alexa, discover new devices."

### Simple Switch Control

" Alexa, Turn on / off [smart home device / group name]."

"Alexa, Start / Activate [scene]."

"Alexa, Turn on / off [smart home device] in [group name]."

### Dimmer/Curtain Control

" Alexa, Set [smart home device / group name] to [##]%. "

"Alexa, Brighten / dim [smart home device / group name]."

### Door sensor/Door Lock Status

" Alexa, Is the [smart home device] open?"

" Alexa, Did I close my [smart home device]?"