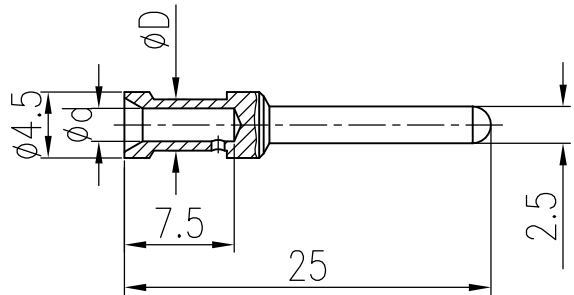


| 日期/Date           |                  | 档案员<br>Filing Clerk |                                      | 1     |      | 2   |                          |                      | 3                         |                        | 4    |      |      | 5    |      |      | 6 |  |  |
|-------------------|------------------|---------------------|--------------------------------------|-------|------|-----|--------------------------|----------------------|---------------------------|------------------------|------|------|------|------|------|------|---|--|--|
| 产品代号<br>Part code | 产品料号<br>Part NO. | 重量/Weight<br>g      | 线径/Wire Gauge<br>mm <sup>2</sup> AWG |       | d    | D   | 剥线长度<br>Stripping length | 标识<br>Identification | 标识图<br>Identification No. | No.                    | No.1 | No.2 | No.3 | No.4 | No.5 | No.6 |   |  |  |
| CEGM-0.37         | 1010192100301    | 1.37                | 0.14-0.37                            | 26-22 | 0.90 | 1.8 | 7.5mm                    | no groove            | No.1                      | 标示图<br>Marked<br>Graph |      |      |      |      |      |      |   |  |  |
| CEGM-0.50         | 1010192100401    | 1.52                | 0.5                                  | 20    | 1.15 | 2.6 | 7.5mm                    | no groove            | No.1                      |                        |      |      |      |      |      |      |   |  |  |
| CEGM-0.75         | 1010192100601    | 1.54                | 0.75                                 | 18    | 1.30 | 2.6 | 7.5mm                    | 1 groove             | No.2                      |                        |      |      |      |      |      |      |   |  |  |
| CEGM-1.0          | 1010192100801    | 1.54                | 1.0                                  | 18    | 1.45 | 2.6 | 7.5mm                    | 1 groove             | No.3                      |                        |      |      |      |      |      |      |   |  |  |
| CEGM-1.5          | 1010192100901    | 1.58                | 1.5                                  | 16    | 1.75 | 3.0 | 7.5mm                    | 2 groove             | No.4                      |                        |      |      |      |      |      |      |   |  |  |
| CEGM-2.5          | 1010192101001    | 1.62                | 2.5                                  | 14    | 2.25 | 3.5 | 7.5mm                    | 3 groove             | No.5                      |                        |      |      |      |      |      |      |   |  |  |
| CEGM-3.0          | 1010192101101    | 1.54                | 3.0                                  | 12    | 2.55 | 3.7 | 7.5mm                    | wide groove          | No.6                      |                        |      |      |      |      |      |      |   |  |  |
| CEGM-4.0          | 1010192101201    | 1.55                | 4.0                                  | 12    | 2.85 | 3.9 | 7.5mm                    | no groove            | No.1                      |                        |      |      |      |      |      |      |   |  |  |

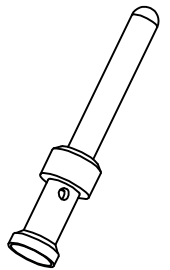


技术参数:

- 材料: 铜合金
- 表面处理: 镀金
- 额定电流: 16A
- 接触电阻: <math>\leq 1\text{m}\Omega</math>
- 线径范围: 0.14-4.0mm<sup>2</sup>(26-12 AWG)
- 可插拔次数: >500

Technical specification:

- Material: copper alloy
- Surface: hard-gold plated
- Rated current: 16A
- Contact resistance: <math>\leq 1\text{m}\Omega</math>
- Wire gauge: 0.14-4.0mm<sup>2</sup>(26-12 AWG)
- Mating cycles: >500



|   |              |   |                |                   |            |  |         |
|---|--------------|---|----------------|-------------------|------------|--|---------|
| 表面处理<br>Finish                                |              | -   |                | 图号<br>Drawing No. |            | -  |         |
| 材料<br>Material                                |              | -   |                | 产品代号<br>Part Code |            | CEGM-XX  |         |
| 比例<br>Scale                                   |              | 2:1   |                | 产品料号<br>Part No.  |            | -  |         |
| 版本<br>REV.                                    |              | V1.0  |                | 产品名称<br>Part Name |            | -  |         |
| 重量<br>Weight                                  |              | -   |                | 重量<br>Weight      |            | -  |         |
| 数量<br>Qty.                                    |              | -   |                | 数量<br>Qty.        |            | -  |         |
| All Dimensions in mm<br>Original Size DIN A 4 |              | All Dimensions in mm<br>Original Size DIN A 4 |                |                   |            | <b>厦门唯恩电气有限公司</b><br>XIAMEN WAIN ELECTRICAL CO.LTD |         |
| 标记<br>Mark                                    | 次数<br>Number | 变更描述/Description                              |                | 姓名/Name           | 日期/Date    | 姓名/Name  | 日期/Date |
| 绘图<br>Drawn                                   | BQ LUO       | 18.10.2010                                    | 标准化<br>Stand.  | -                 | -          | -  | -       |
| 审核<br>Checked                                 | P RAO        | 18.10.2010                                    |                |                   |            |  |         |
| 工艺<br>Process                                 | -            | -   | 批准<br>Approved | YY LIN            | 18.10.2010 |  |         |