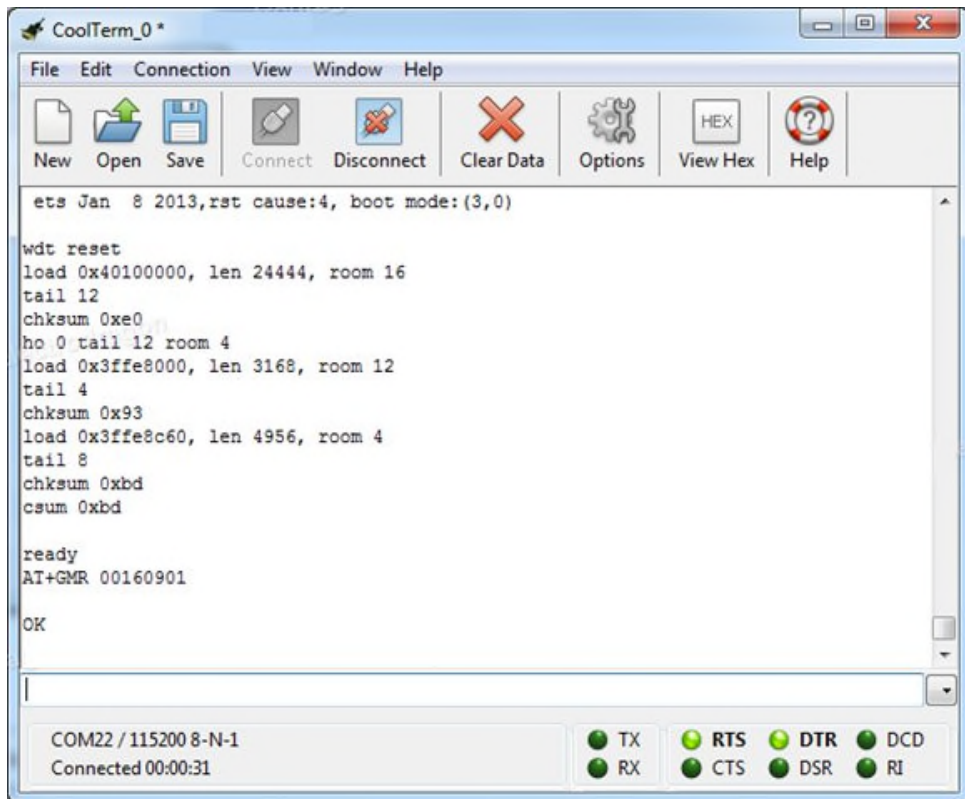


Cloud updating your Wi07C ESP8266 now

First what you receive firmware version, mostly could be:

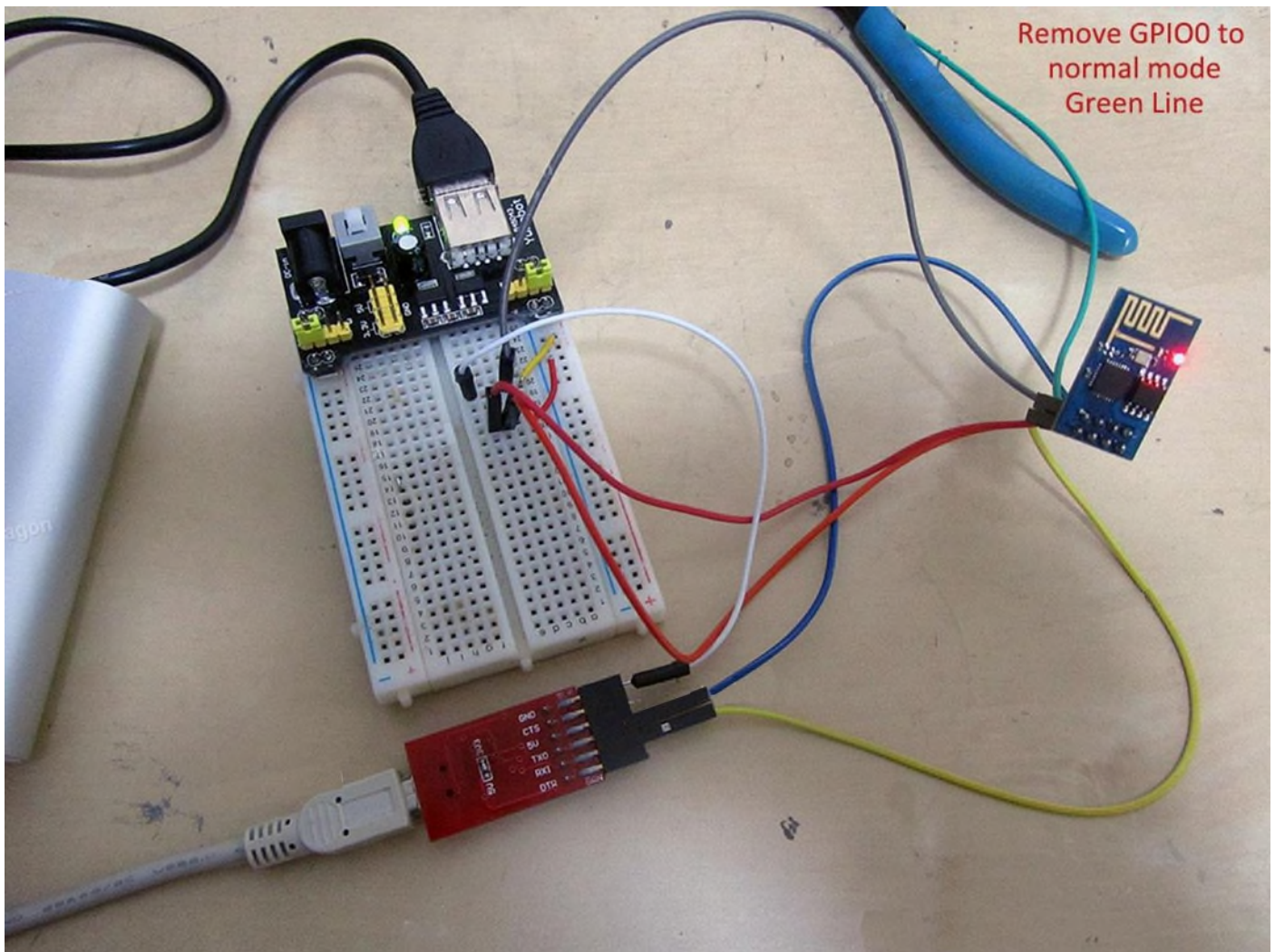
00160901, this version number actually are two parts, 0016 is the SDK version, and 0901 is the AT version.



Let us first update to a Cloud update supported version 00170901.

Please find the tool in this zip file : [[Cloud update ESP8266 \(zip file\)](#)]

and run the tool, select the bin file and COM port is fine enough.



Finally when the cloud updating mode is done, you don't have enter into update mode anymore, just run AT commands to updating via online :

Remember to join your router for internet, and run AT+CIUPDATE to get updates.

云升级方法.txt - Notepad

```
File Edit Format View Help
1 云升级功能使用:
先用通用升级程序, 烧写0.92版本固件到你的模块!
2 然后参照下面云升级指令完成最新版本升级

Update steps
1.Make sure TE(terminal equipment) is in sta or sta+ap mode
ex. AT+CWMODE=3
OK
AT+RST

2.Make sure TE got ip address
ex. AT+CWJAP="ssid","12345678"
OK
AT+CIFSR
192.168.1.134

3.Let's update
ex. AT+CIUPDATE
+CIPUPDATE:1 found server
+CIPUPDATE:2 connect server
+CIPUPDATE:3 got edition
+CIPUPDATE:4 start start
OK

note. If there are mistakes in the updating, then break update
```

CoolTerm_0*

```
File Edit Connection View Window Help
New Open Save Connect Disconnect Clear Data Options View Hex Help

AT+GMR 00170901
OK
AT+CWMODE=3 no change
AT+CWJAP="MERCURY_6EDASC","85613121"
OK
AT+CWJAP? +CWJAP:"MERCURY_6EDASC"

OK
AT+CIUPDATE +CIPUPDATE:1
+CIPUPDATE:2
+CIPUPDATE:3
+CIPUPDATE:4

OK
ets Jan 8 2013,rst cause:4, boot mode:(3,7)

wdt reset
load 0x40100000, len 212, room 16
tail 4
chksum 0x5e
load 0x3ffe8000, len 788, room 4
tail 0
chksum 0x1c
load 0x3ffe8314, len 72, room 8
tail 0
chksum 0x55
csum 0x55
jump to user2

ready
```

If you don't see "error" feedback (mostly case can be you didn't connect to internet), you should see :

3. Let's update

ex. AT+CIUPDATE

+CIPUPDATE:1 found server

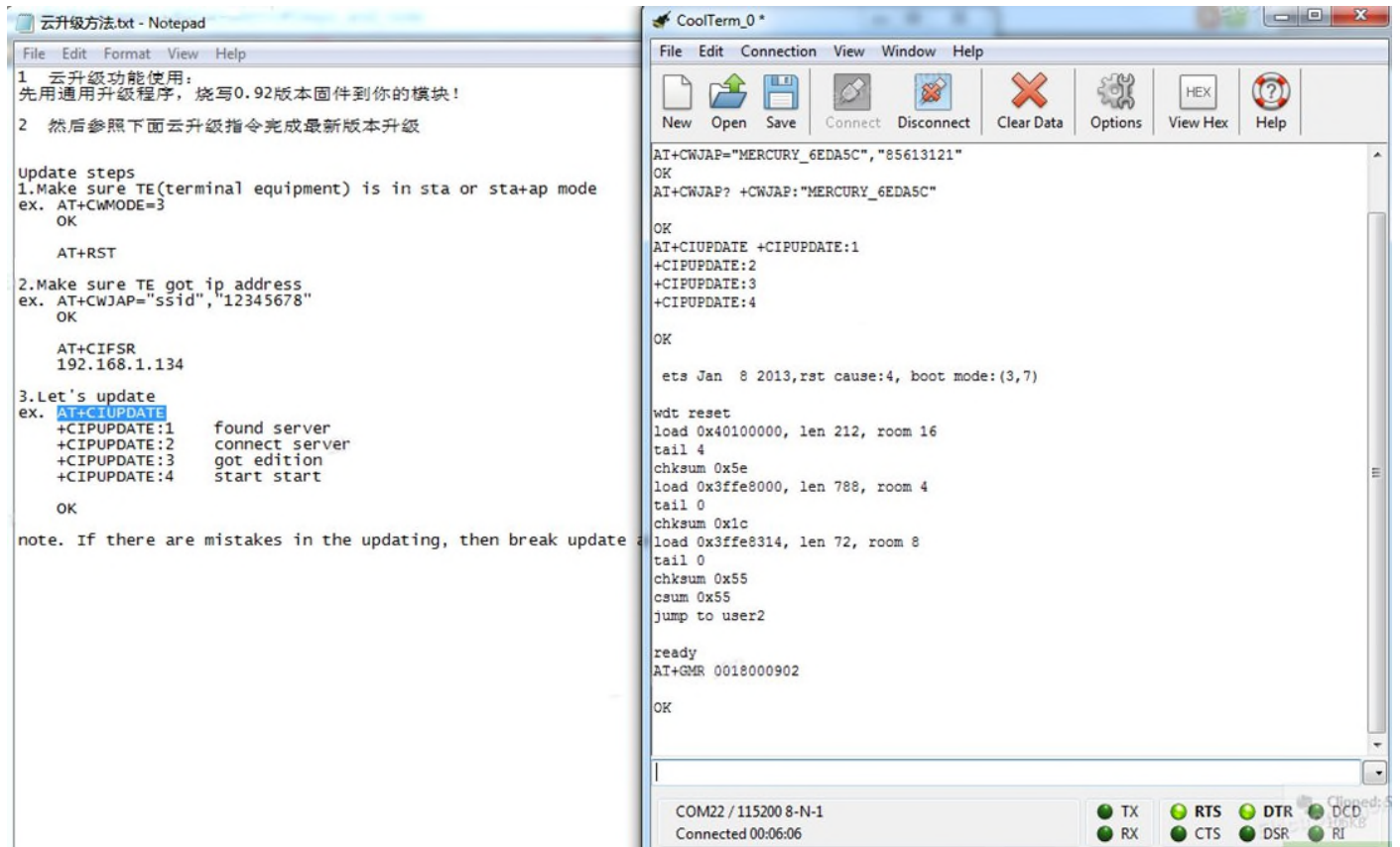
+CIPUPDATE:2 connect server

+CIPUPDATE:3 got edition

+CIPUPDATE:4 start start

OK

Now here are the final version 00180902:



The new updates include :

AT update :

1. based SDK v0.9.2;
2. increasing the online update feature, the new command CIUPDATE;
3. modify CWLAP instruction supports filtering, increase return information;
4. command input end use \r\n;
5. CWMODE do not need to restart after setting;
6. other problems corrected;
7. the new Technical Support Email support-at@espressif.com;

Don't forget to connect espressif straight, they will help you too!