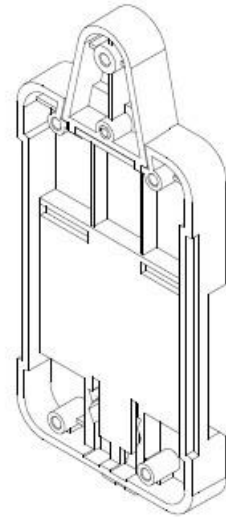
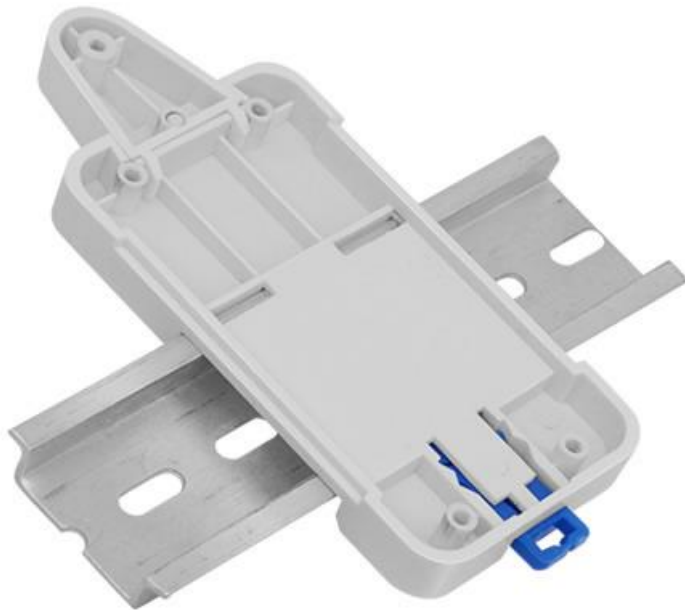


## Overview

As you know, most of the Sonoff products are not DIN rail mounted, which makes it difficult to put the Sonoff products into the switchboard. Now we launch another inexpensive and practical accessory - Sonoff DR - DIN Rail Tray. We provide this product just to let our users easily install the Sonoff switches to their switchboard.

**Note: the DIN-rail is not included in the box.**



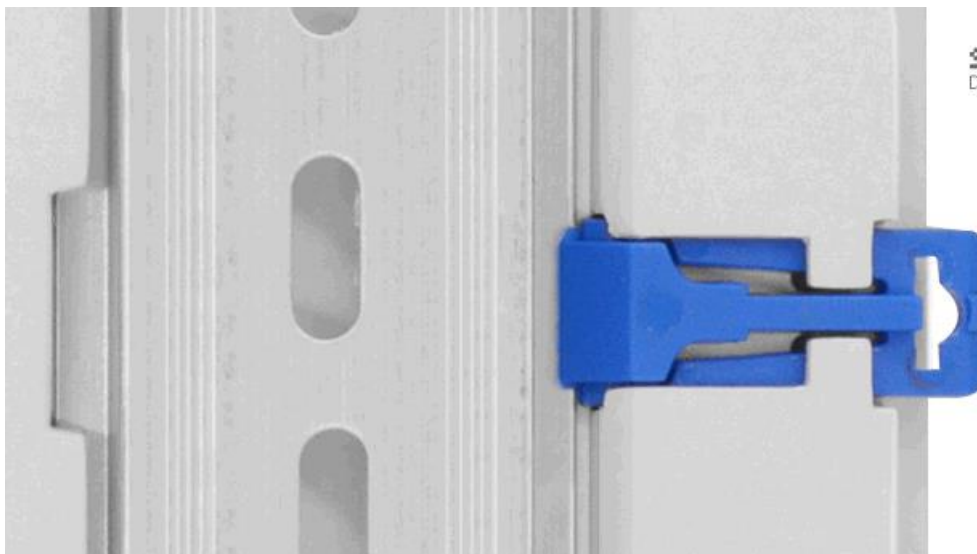
**SONOFF DR**  
DIN rail tray for sonoff

Sonoff DR can work with most of our Sonoff products, including Sonoff Basic, Sonoff RF, Sonoff Pow, Sonoff TH10/16, Sonoff Dual, Sonoff G1.



**SONOFF DR**  
DIN rail tray for sonoff

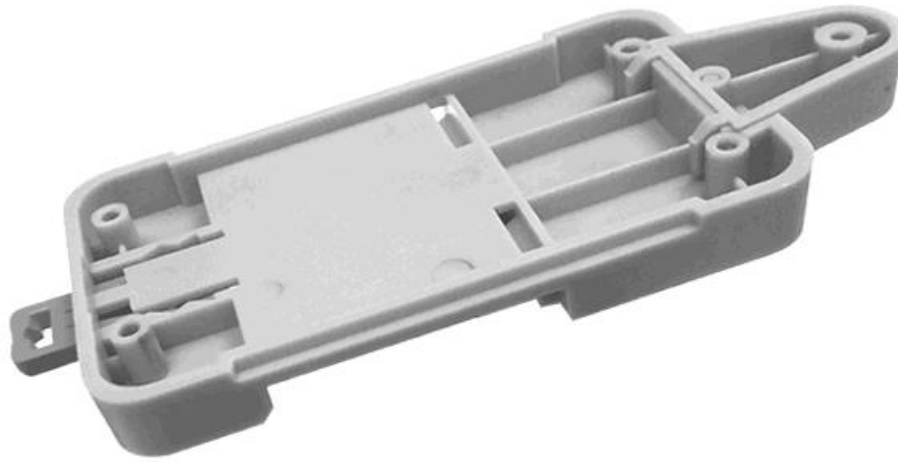
The installation is very simple. The Sonoff DR has a blue part, which allows you push to fix the switch to DIN rail or pull to take it down. No external tools are required.



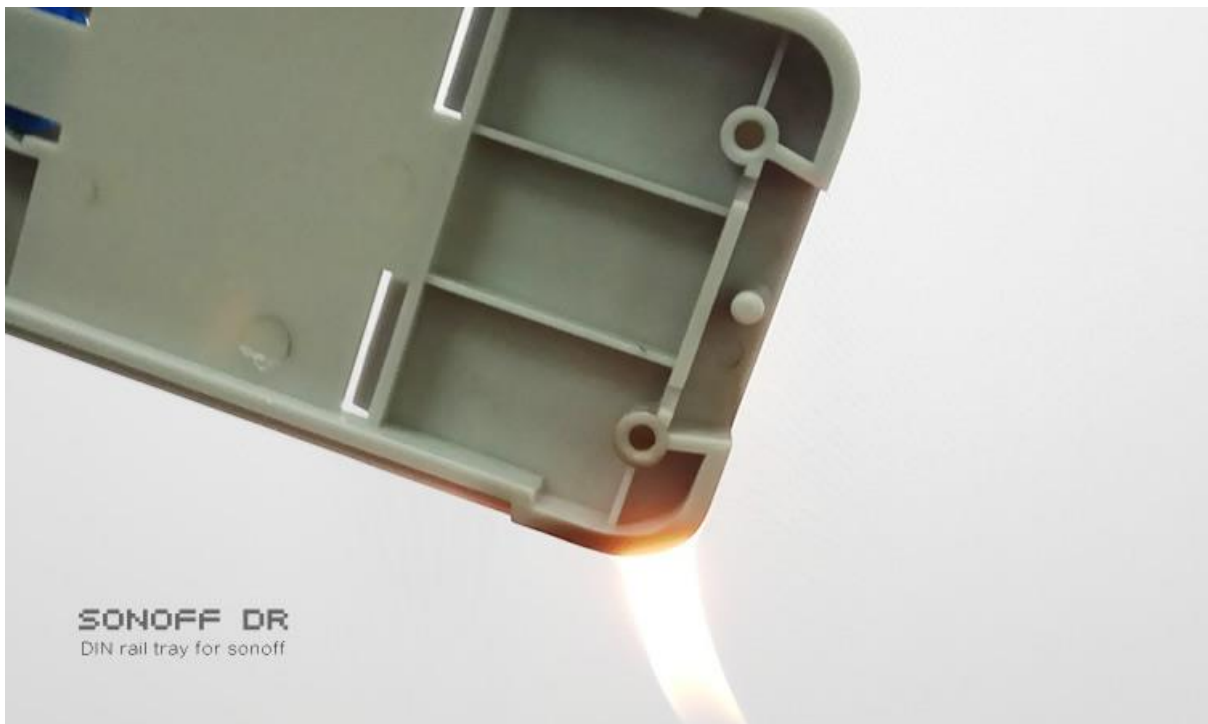
**SONOFF DR**  
DIN rail tray for sonoff

We particularly add external part so that it's more durable and flexible.

**SONOFF DR**  
DIN rail tray for sonoff

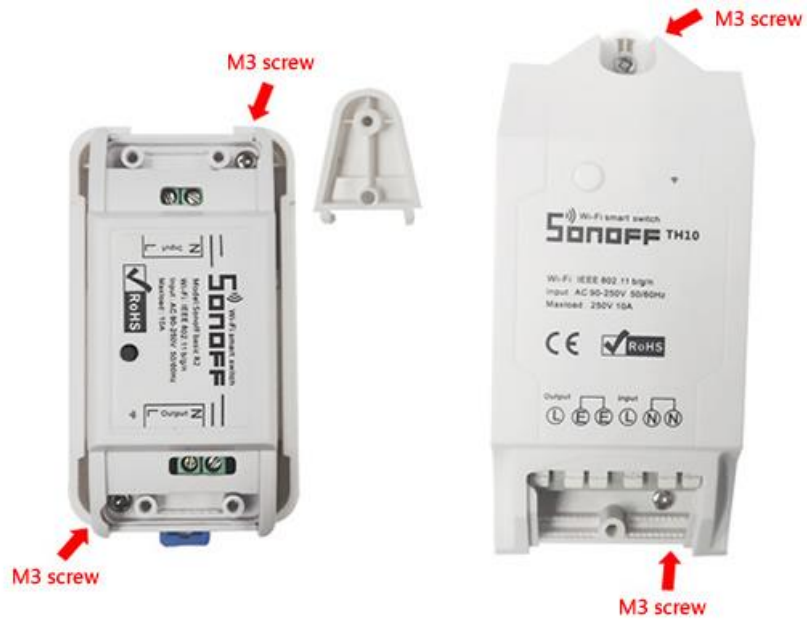


The material is fire-retardant ABS and the fire rating is V0.



The Sonoff DR comes with 4\*M3 screws, which perfectly fit Sonoff's original holes, you don't need to open any holes.

**SONOFF DR**  
DIN rail tray for sonoff



Installation and application:



**SONOFF DR**  
DIN rail tray for sonoff



**SONOFF DR**  
DIN rail tray for sonoff

