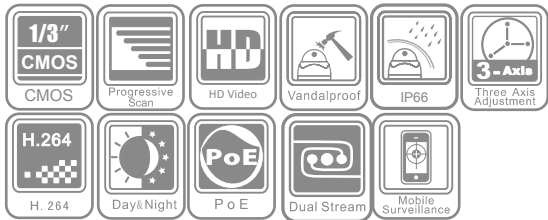


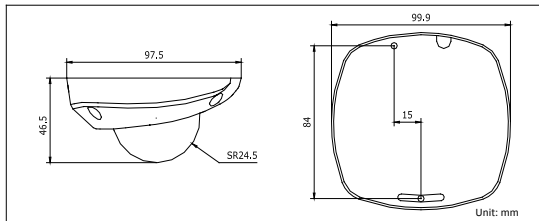
DS-2CD7164-E 1.3MP Network Mini Dome Camera



Key features

- 1/3" progressive scan CMOS
- H.264 / MPEG4 / MJPEG video compression
- Up to 1.3 megapixel resolution
- HD 720P real time video
- Day / night auto switch
- Vandal-proof housing
- IP66 rating

Dimensions



Specifications

DS-2CD7164-E	
Camera	
Image sensor	1/3" Progressive Scan CMOS
Min. illumination	0.01 lux @F1.2, AGC ON, 0.02 lux @F1.8, AGC ON
Shutter time	1/25s ~ 1/100,000s
Lens	4mm @F2.0 (2.8, 6, 8mm optional), angle of view: 73°
Lens mount	M12
Angle adjustment	Pan: ± 15°, tilt: 0 ~ 90°, rotation: ± 15°
Day & night	Electronic
Compression standard	
Video compression	H.264 / MPEG4 / MJPEG
Bit rate	32 Kbps ~ 16 Mbps
Dual stream	Yes
Image	
Max. image resolution	1280 × 960
Frame rate	50Hz: 25fps (1280 × 960), 25fps (1280 × 720) 60Hz: 30fps (1280 × 960), 30fps (1280 × 720)
Image settings	Saturation, brightness, contrast adjustable by client software or web browser
Network	
Network storage	NAS (iSCSI optional)
Alarm trigger	Motion detection
Protocols	TCP/IP, HTTP, DHCP, DNS, DDNS, RTP, RTSP, PPPoE, SMTP, NTP, SNMP, HTTPS, FTP, 802.1x, Qos (SIP, SRTP, IPv6 optional)
Security	User Authentication, Watermark
System compatibility	ONVIF, PSIA, CGI
Interface	
Communication interface	1 RJ45 10M / 100M ethernet port
Reset button	Yes
General	
Operating conditions	-10°C ~ 60°C (14°F ~ 140°F) humidity 90% or less (non-condensing)
Power supply	12 VDC ± 10%, PoE (802.3af)
Power consumption	max. 4 W
Impact protection	IEC60068-275Eh, 50J; EN50102, up to IK10
Weather-proof rating	IP66
Dimensions	99.9 × 97.5 × 46.5 mm (3.93" × 3.84" × 1.83")
Weight	250g (0.55 lbs)

Available models

DS-2CD7164-E