

## IEC Appliance Inlet C14 with Filter, Increased Dielectric Strength



C14  
  
 70° C

**Description**

- Panel Mount:  
Screw-on mounting from front side
- 2 Functions:  
Appliance Inlet Protection class I, Line-filter in standard version
- Quick connect terminals 6.3 x 0.8 mm

**Approvals**

- VDE Certificate Number: 40004665
- UL File Number: E72928

**Characteristics**

- Compact design with optimal shielding
- All single elements are already wired
- Universal line filter for standard applications  
With enhanced surge withstand voltage
- Qualified for use in equipment according IEC/EN 60950

**References****Weblinks**

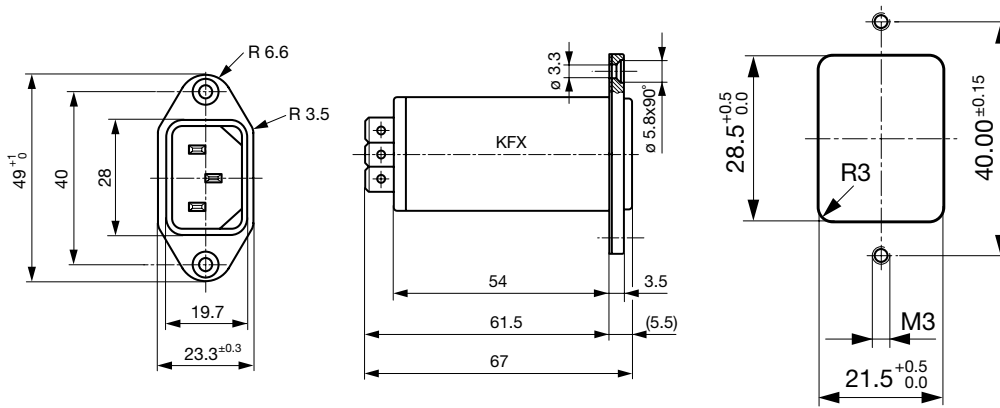
[pdf](#), [html](#), [General Product Information](#), [Approvals](#), [RoHS](#), [CHINA-RoHS](#), [Mating Connectors](#), [e-Store](#), [SCHURTER-Stock-Check](#), [Distributor-Stock-Check](#), [Accessories](#)

Newly available variants corresponding to V-Lock mating cordset. The connector is equipped with a notch intended for use with the latching cordset. The cord latching system prevents against accidental removal of the cordset.

**Technical Data**

Ratings IEC	1 - 10A @ Ta 40 °C / 250 VAC; 50Hz	Appliance-Inlet/-Outlet	C14 acc. to IEC/EN 60320-1, UL 498, CSA C22.2 no. 42 (for cold conditions) pin-temperature 70 °C, 10A, Protection Class 1
Ratings UL/CSA	1 - 10A @ Ta 40 °C / 125 VAC; 60Hz	Line Filter	Standard Version, IEC 60939, IEC 60601-1, UL 1283, UL 544, EN 133 200, CSA C22.2 no. 8 <a href="#">Technical details</a>
Leakage Current	standard < 0.5 mA (250V / 60Hz)	MTBF	> 3'100'000h acc. to MIL-HB-217 F
Dielectric Strength	> 1.7 kVDC between L-N > 2.7 kVDC between L/N-PE Test voltage (2 sec)		
Impulse Withstand Voltage	> 4 kV between L-N (CX1) > 5 kV between L/N-PE		
Allowable Operation Temp.	-25 °C to 85 °C		
Climatic Category	25/085/21 acc. to IEC 60068-1		
Degree of Protection	from front side IP 40 acc. to IEC 60529		
Protection Class	Suitable for appliances with protection class 1 acc. to IEC 61140		
Terminal	Quick connect terminals 6.3 x 0.8 mm		
Panel Thickness s	Screw: max 8 mm Mounting screw torque max 0.5 Nm		
Material: Housing	Thermoplastic, black, UL 94V-0		

## Dimensions

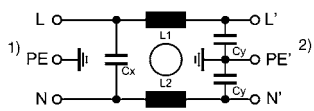


## Technical Data of Filter-Components

Rated Current [A]	Filter-Type	Inductances L [mH]	Capacitance CX [nF]	Capacitance CY [nF]
1	Medical Version (M5)	2 x 10	47	-
2	Medical Version (M5)	2 x 4	47	-
4	Medical Version (M5)	2 x 1.5	47	-
6	Medical Version (M5)	2 x 0.8	47	-
10	Medical Version (M5)	2 x 0.3	47	-
1	Standard Version	2 x 10	47	2.2
2	Standard Version	2 x 4	47	2.2
4	Standard Version	2 x 1.5	47	2.2
6	Standard Version	2 x 0.8	47	2.2
10	Standard Version	2 x 0.3	47	2.2

## Diagrams

Standard version



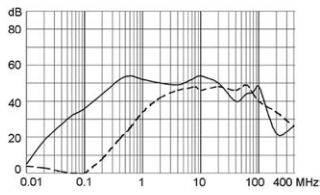
- 1) Line
- 2) Load

**Attenuation Loss**

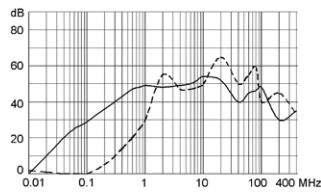
Standard version

--- differential mode    \_\_\_\_ common mode

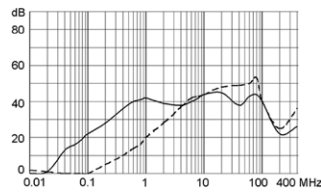
1 A



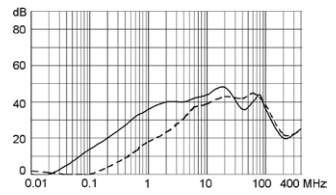
2 A



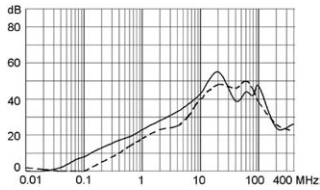
4 A



6 A



10 A



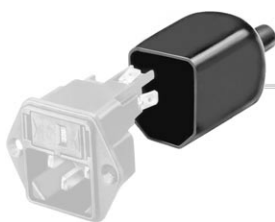
**Variants**

Type	Rated Current [A]	Filter-Type	CX Class	Order Number
KFX	1	Standard Version	X1	4300.5061
KFX	2	Standard Version	X1	4300.5062
KFX	4	Standard Version	X1	4300.5063
KFX	6	Standard Version	X1	4300.5064
KFX	10	Standard Version	X1	4300.5065
KFX	1	Medical Version (M5)	X1	4300.5101
KFX	2	Medical Version (M5)	X1	4300.5102
KFX	4	Medical Version (M5)	X1	4300.5103
KFX	6	Medical Version (M5)	X1	4300.5104
KFX	10	Medical Version (M5)	X1	4300.5105

**Packaging unit**    10 Pcs

**Accessories**

**Description**



Assorted Covers  
Rear Cover



Cord retaining kits  
Cord retaining strain relief

Mating Outlets/Connectors

Category / Description

Appliance Outlet Overview complete



IEC Appliance Outlet F, Screw-on Mounting, Front Side, Solder Terminal	4787
IEC Appliance Outlet F, Snap-in Mounting, Front Side, Solder or Quick-connect Terminal	4788
IEC Appliance Outlet F or H, Screw-on Mounting, Front Side, Solder, PCB or Quick-connect Terminal	5091
IEC Appliance Outlet F or H, Screw-on Mounting, Front Side, Solder or Quick-connect Terminal	5092

Appliance Outlet further types to KFX

Connector Overview complete



IEC Connector C15, Rewireable, Straight	0101
IEC Connector C15A, Rewireable, Straight	0102
IEC Connector C15A, Rewireable, Straight	0102-G
IEC Connector C15A, Rewireable, Angled	0112
IEC Connector C13, Rewireable, Angled	4012

Connector further types to KFX

...

Power Cord Overview complete



Power Cord with IEC Connector C13, Angled	0311
Power Cord with IEC Connector C13, Angled	3011
Power Cord with IEC Connector C13, Angled	3012
Power Cord with IEC Connector C13, Angled	3013
Power Cord with IEC Connector C13	3020

Power Cord further types to KFX

...