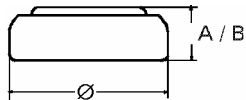


**Data Sheet**

**Type Number** ..... 379  
**Designation IEC** ..... SR 63  
**System** ..... Silver oxide / Zinc /  
 NaOH - Electrolyte



**Nominal Voltage** ..... 1,55 V  
**Typical Capacity C** ..... 14 mAh  
 Load 68,1 kOhm, at 20°C down to 1.3 V

**Weight (approx.)** ..... 0,23 g  
**Volume** ..... 0,06 ccm

**Temperature Ranges**

	min	max.
Storage .....	-10°C	65 °C
Discharge .....	-10°C	65°C

**Dimensions**

	min	max.
Diameter (A) .....	5,7	5,8
Height (B) .....	2	2,15

**Segment** ..... Watch

**Main Applications** ..... Watch  
 Photo  
 Electronic

**Typical Capacities (at 20°C)**

Discharge Type	Load	End Voltage:	1.3 V
Continuous 24h/d,7d/w Current [µA]:	68100 Ω  23	Time: Capacity [mAh]: Energy [MWh]:	610 h 14 22

All Data contained herein is for single cells

For battery applications, performance data may vary from single cell data, depending on specific battery configuration

VARTA Microbattery GmbH, Daimlerstr. 1, D-73479 Ellwangen/Jagst  
 Tel.: (+49) 7961/921-0, Telefax: (+49) 7961/921-553

Subject to change without prior notice!  
 Date of issue: 05.08.2003