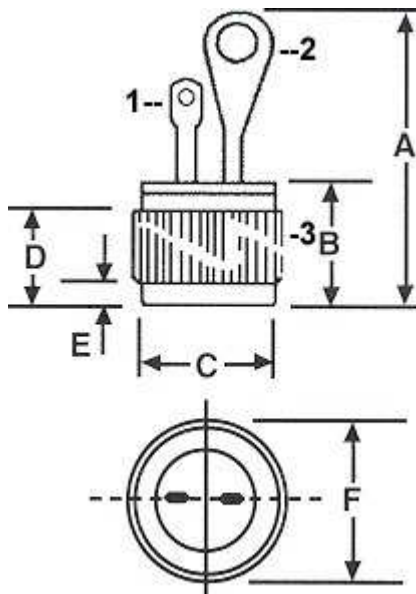


Hutson Industries, Inc.

1000 Hutson Circle
 Frisco, TX 75034
 TEL:(972)335-8600
 Fax:(972)377-2197

40 AMP 1/2" PRESS FIT SCR



1. GATE
2. Cathode
3. Anode (case)

SYM	INCHES	
A	1.050	
B	0.380	0.355
C	0.475	0.467
D	0.305	0.265
E	0.100	0.075
F	0.505	0.501

MAXIMUM RATINGS	SYMBOL	DEVICE NUMBERS	UNITS
REPETITIVE PEAK OFF-STATE VOLTAGE AND REPETITIVE PEAK REVERSE VOLTAGE GATE OPEN, AND $T_J = 110^\circ\text{C}/\text{VDRM}$	50 100 200 400 600	PS040 PS140 PS240 PS440 PS640	VOLT
RMS ON-STATE CURRENT AT $T_C = 80^\circ\text{C}$ AND CONDUCTION ANGLE OF 360°	IT(RMS)	40	AMP
PEAK SURGE (NON-REPETITIVE) ON-STATE CURRENT, ONE-CYCLE, AT 50HZ OR 60HZ	ITSM	400	AMP
PEAK GATE - TRIGGER CURRENT FOR $3\mu\text{SEC. MAX.}$	IGTM	2	AMP
PEAK GATE - POWER DISSIPATION AT $IGT \leq IGTM$	PGM	20	WATT
AVERAGE GATE - POWER DISSIPATION	PG(AV)	0.5	WATT
STORAGE TEMPERATURE RANGE	TSTG	-40 to +150	$^\circ\text{C}$
OPERATING TEMPERATURE RANGE, T_J	TOPER	-40 to +150	$^\circ\text{C}$
PEAK OFF - STATE CURRENT GATE OPEN, $T_C=110^\circ\text{C}$ VDRM & VRRM=MAX. RATING	IDRM & IRRM	1.0	MA MAX.
MAXIMUM ON - STATE VOLTAGE, (PEAK) AT $T_C = 25^\circ\text{C}$ AND $I_T = \text{RATED AMPS}$	VTM	1.6	VOLT MAX.
DC HOLDING CURRENT, GATE OPEN AND $T_C = 25^\circ\text{C}$	IHO	50	MA MAX.
CRITICAL RATE-OF-RISE OF OFF-STATE VOLTAGE, GATE OPEN, $T_C = 110^\circ\text{C}$	CRITICAL dv/dt	200	V/ $\mu\text{SEC.}$
DC GATE-TRIGGER CURRENT FOR ANODE VOLTAGE = 12VDC, $R_L = 60\ \Omega$ AND AT $T_C = 25^\circ\text{C}$	IGT	25	MA MAX.
DC GATE - TRIGGER VOLTAGE FOR ANODE VOLTAGE = 12VDC, $R_L = 60\ \Omega$ AND AT $T_C = 25^\circ\text{C}$	VGT	2.0	VOLT MAX.
GATE-CONTROLLED TURN-ON TIME FOR $T_D + T_R$, $IGT = 150\ \text{MA}$ AND $T_C = 25^\circ\text{C}$	T gt	2.5	$\mu\text{SEC.}$
THERMAL RESISTANCE, JUNCTION-TO-CASE	R θ J-C	0.9	$^\circ\text{C}/\text{WATT TYP}$