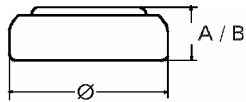


Data Sheet

Type Number 389
Designation IEC SR54
System Silver oxide / Zinc /
 KOH - Electrolyte



Nominal Voltage 1,55 V
Typical Capacity C 81 mAh
 Load 5.6 kOhm, at 20°C down to 1.3 V

Weight (approx.) 1,31 g
Volume 0,28 ccm
Coding..... Manufacturing Month/Year by
 Letter Code

Temperature Ranges

Storage	min	max.
Discharge	-10°C	65 °C
	-10°C	65°C

Dimensions

Diameter	min	max.
Height (A/B)	11,25	11,60
	2,75	3,05

Segment
 Watch / High Drain

Main Applications
 Watch
 Photo
 Electronic

Typical Capacities (at 20°C)

Discharge Type	Load	End Voltage:	1.3 V
Continuous	5600 Ω	Time:	295 h
24h/d,7d/w		Capacity [mAh]:	81
Current [µA]:	275	Energy [MWh]:	124