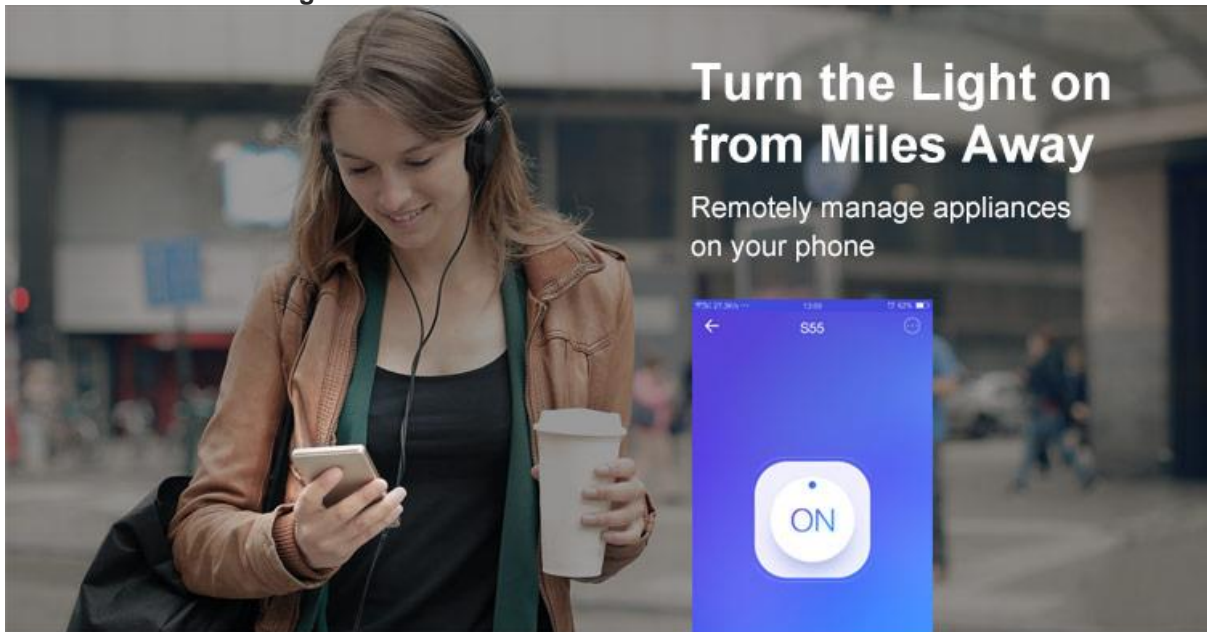


Overview

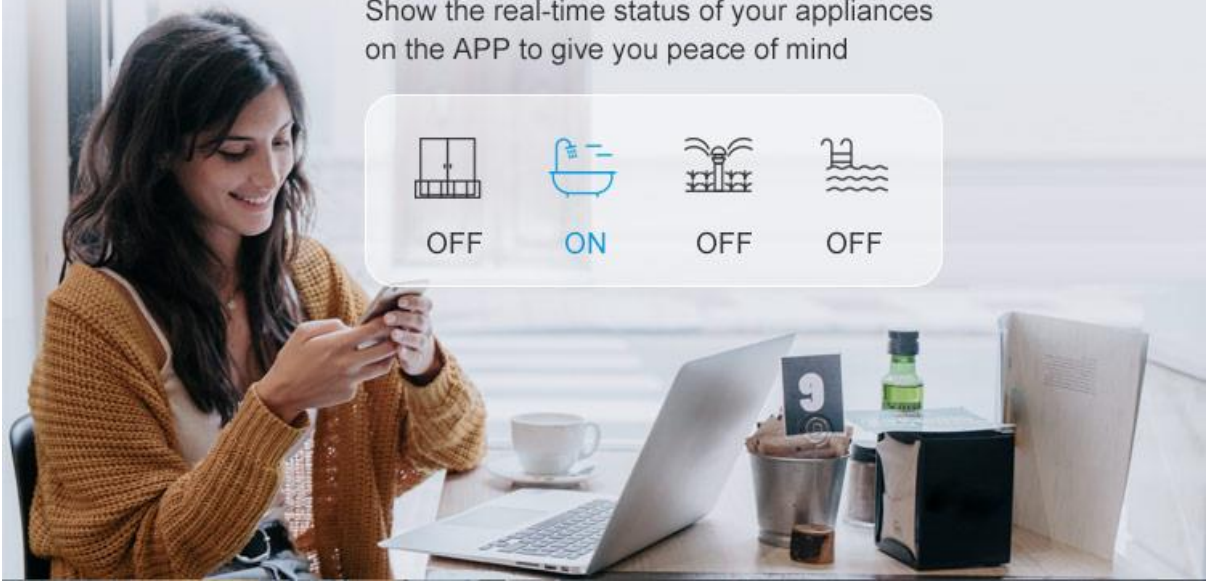
SONOFF S55 is a handy Waterproof Smart Socket that can connect to your home Wi-Fi network and make you manage and program devices from far with your phone or voice via Amazon Alexa or Google Assistant. Adopts heavy-duty IP55 weather resistant material ensures it is rugged and safe when you use it outside. Customize schedules for devices to let them switch on/off automatically according to your needs wherever you are. Perfect for various occasions like garden, patio, open-air restaurant and more. Easy to install.

Check out the amazing features of SONOFF S55 below:



Always Know about Your Home

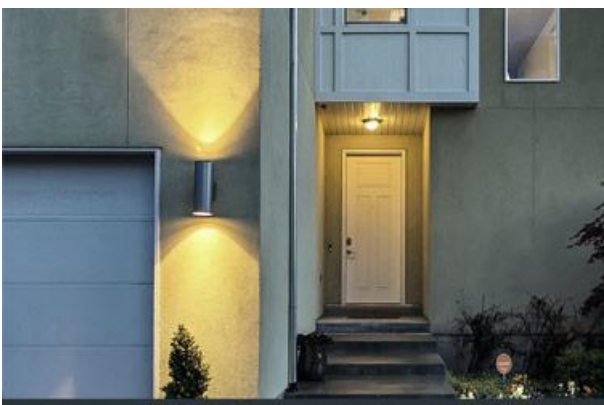
Show the real-time status of your appliances on the APP to give you peace of mind



OFF	ON	OFF	OFF

You Command, It Obeys

Seamlessly work with Amazon Alexa and Google Assistant, simply turn the light on/off with your voice

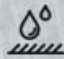


+ works with amazon alexa
 works with the Google Assistant



Still Work in the Rain

Specially designed for outdoor use

 IP55 splashproof



Full of Limitless Possibilities

IFTTT function allows more actions to happen



Share Control, Quite Free

Manage your home together with your family just by device sharing



Tailor Your Smart Home System

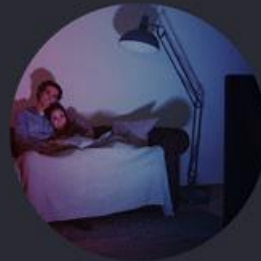
Make one SONOFF device to trigger another one or activate a group of devices via a single tap



Arrive home



Leave home



Movie night



Turn Your Old Phone into A Camera

Place the old phone in your greenhouse, convenient to monitor plants remotely



Old phone



New phone



Download eWeLink Camera app on your old phone (Android system) and pair it with eWeLink app on your new phone to make it act as a camera



Turn Your Old Phone into A Camera

Place the old phone in your greenhouse, convenient to monitor plants remotely



Old phone



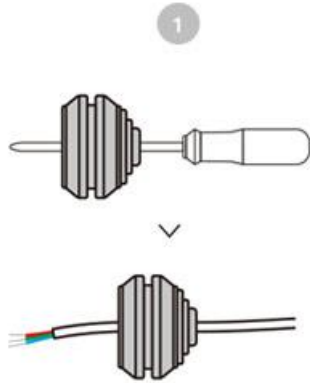
New phone



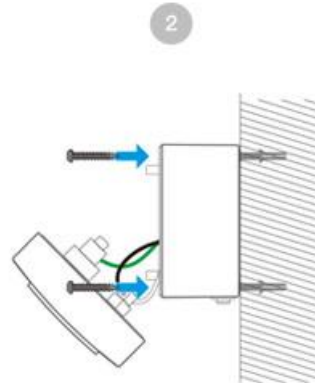
Download eWeLink Camera app on your old phone (Android system) and pair it with eWeLink app on your new phone to make it act as a camera



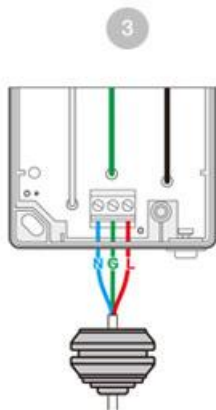
Installation, It's A Cinch



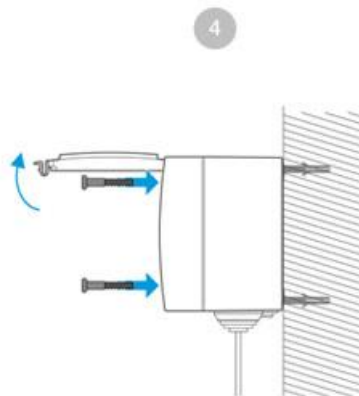
Punch a right hole for wires on the rubber stopper, then install it on the bottom of the back box.



Drill 2 holes on the wall and then attach the back box to the wall with long screws.



Feed in wires and ensure a correct wire connection.



Fix the front cover and the back box with short screws.