

Product description **Contacts: 5, male panel mount connector with single wires, screwed from front, 0.25mm<sup>2</sup>, PG 9**

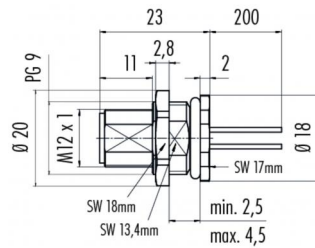
Area **M12-A Series 713/763**

Order number **76 0531 1011 00005-0200**

### Illustration

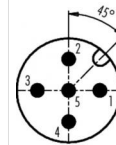


### Scale drawing



Ausführung mit Zink Druckgussgehäuse  
Version with zinc diecasted housing

### Contact arrangement



	X	Y
1	2,50	0,00
2	0,00	2,50
3	-2,50	0,00
4	0,00	-2,50
5	0,00	0,00

- 1 braun/brown
- 2 weiß/white
- 3 blau/blue
- 4 schwarz/black
- 5 grau/grey

Geschirmte Versionen: Schirm auf Gehäuse  
Shielded versions: shield on housing

You can find the assembly instructions on the next page.

## Technical data

### General values

Connector design male panel mount connector  
Connector locking system bolted  
Termination single wires UL 1007/1569  
Wire gauge (mm) (0,25 mm<sup>2</sup>)  
Wire gauge (AWG) 24  
Upper limit temperature 85 °C  
Lower limit temperature -40 °C

### Cable data

Approval 1 UL

### Electrical values

Rated voltage 60 V  
Rated impulse voltage 800 V  
Pollution degree 3  
Overvoltage category II  
Insulating material group III  
Rated current (40 °C) 4A (3A UL)  
Volume resistivity ≤ 3 mΩ  
EMC compliance not shielded  
Degree of protection IP68  
Mechanical operation > 100 Mating cycles

### Material

Contact material CuZn (Messing)  
Contact plating Au (gold)  
Contact body material PA  
Housing material Zink Druckguss vernickelt

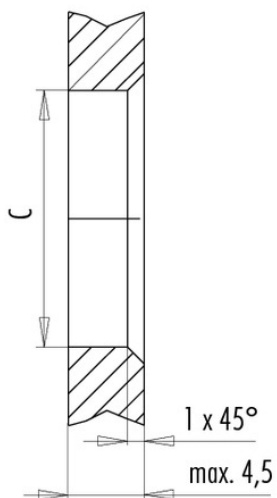
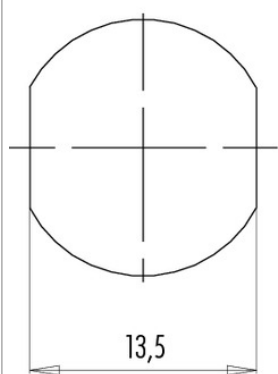
Product description **Contacts: 5, male panel mount connector with single wires, screwed from front, 0.25mm<sup>2</sup>, PG 9**

Area **M12-A Series 713/763**  
Order number **76 0531 1011 00005-0200**

### Assembly instructions / Panel cut-out

Mit Fläche als Verdrehschutz  
With flats as anti-rotation device

Mit Durchgangsbohrung  
With bore hole



	C
PG 9	15,3
M16x1,5	16,1

Anzugsdrehmoment/Tightening torque

Metallgehäuse/Metal housing 6,25 Nm  
Kunststoffgehäuse/Plastic housing 3,75 Nm

Product description	<b>Contacts: 5, male panel mount connector with single wires, screwed from front, 0.25mm<sup>2</sup>, PG 9</b>
Area	<b>M12-A Series 713/763</b>
Order number	<b>76 0531 1011 00005-0200</b>

## Sicherheitshinweise

1. The connector must not be connected or separated under load. Non-observance and incorrect use can result in personal injury.
2. The connectors are designed for use in plant, control system and electrical equipment. The end user is responsible for checking whether the connectors are suitable for use in other applications.
6. Connectors with degree of protection IP 67 and IP 68 are not suitable for use under water. When used outdoors, the connectors must be separately protected against corrosion. For further information about IP degrees of protection refer to 'Technical support' in the Download Centre.