

Product description	M12-D female panel mount connector, Contacts: 4, shielded, cable, IP67, PG9, PUR green, 2 x 2 x AWG22
Area	M12-D series 876
Order number	70 3734 706 04

Illustration	Scale drawing	Contact arrangement															
		<table border="1" style="margin: 10px;"> <thead> <tr> <th></th> <th>X</th> <th>Y</th> </tr> </thead> <tbody> <tr> <td>1</td> <td>-2,50</td> <td>0,00</td> </tr> <tr> <td>2</td> <td>0,00</td> <td>2,50</td> </tr> <tr> <td>3</td> <td>2,50</td> <td>0,00</td> </tr> <tr> <td>4</td> <td>0,00</td> <td>-2,50</td> </tr> </tbody> </table> <p>1 gelb 2 weiß 3 orange 4 blau</p>		X	Y	1	-2,50	0,00	2	0,00	2,50	3	2,50	0,00	4	0,00	-2,50
	X	Y															
1	-2,50	0,00															
2	0,00	2,50															
3	2,50	0,00															
4	0,00	-2,50															

You can find the assembly instructions on the next page.

Technical data

General values

Connector design	female panel mount connector
Connector locking system	screw
Termination	cable
Wire gauge (AWG)	22
Upper limit temperature	60 °C
Lower limit temperature	- 20 °C
Customs tariff number	85444290

Cable data

Cable length	0,5 m
Sheath material	PUR
Single-lead insulation	Polyolefin
Single-lead structure	AWG 22/7 mm
Cable diameter	6.7 mm
Conductor resistance	55Ω/Km
Temperature range, moving cable, °C from	- 20 °C
Temperature range, moving cable, °C to	60 °C
Temperature range, fixed cable, °C from	-40 °C
Temperature range, fixed cable, °C to	80 °C
Bending radius, fixed cable	≥ 5 x Ø
Bending radius, moving cable	≥ 15 x Ø
UL style 1	AWM20236

Electrical values

Rated current (40 °C)	4 A
Rated voltage	30 V
Rated impulse voltage	500 V
Pollution degree	3
Overvoltage category	II
Insulating material group	II
Insulation resistance	> 10 ¹⁰ Ω
EMC compliance	shielded
Degree of protection	IP67
Mechanical operation	> 500 Mating cycles

Material

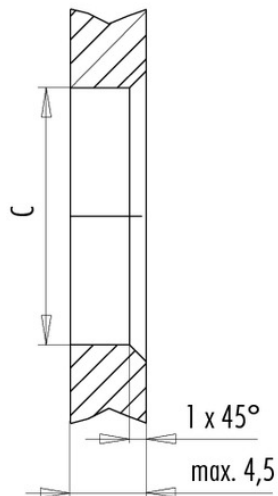
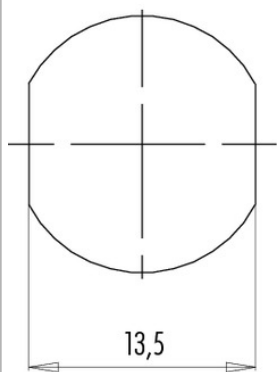
Contact material	CuSn (bronze)
Contact plating	Au (gold)
Contact body material	PA

Product description **M12-D female panel mount connector, Contacts: 4, shielded, cable, IP67, PG9, PUR green, 2 x 2 x AWG22**
 Area **M12-D series 876**
 Order number **70 3734 706 04**

Assembly instructions / Panel cut-out

Mit Fläche als Verdrehschutz
 With flats as anti-rotation device

Mit Durchgangsbohrung
 With bore hole



	C
PG 9	15,3
M16x1,5	16,1

Anzugsdrehmoment/Tightening torque

Metallgehäuse/Metal housing 6,25 Nm
 Kunststoffgehäuse/Plastic housing 3,75 Nm

Product description	M12-D female panel mount connector, Contacts: 4, shielded, cable, IP67, PG9, PUR green, 2 x 2 x AWG22
Area	M12-D series 876
Order number	70 3734 706 04

Security notices

The connector must not be connected or separated under load. Non-observance and incorrect use can result in personal injury.

The connectors are designed for use in plant, control system and electrical equipment. The end user is responsible for checking whether the connectors are suitable for use in other applications.

Connectors with degree of protection IP 67 and IP 68 are not suitable for use under water. When used outdoors, the connectors must be separately protected against corrosion. For further information about IP degrees of protection refer to 'Technical support' in the Download Centre.