



# 1H Series

High Current Sealed Toggle Switch

IP 67  
ACCORDING TO  
EN 60529:1989+A1:2001  
IEC 60529:2001



1H  
Toggle Switches



## SPECIFICATIONS

**CONTACT RATING:** Dependent upon contact material, see page 26.

**MECHANICAL LIFE:** 30,000 make-and-break cycles.

**CONTACT RESISTANCE:** 20 mΩ max. (initial value) @ 2-4VDC  
100mA for both silver and gold plated contacts.

**INSULATION RESISTANCE:** 1,000 MΩ min./500VDC

**DIELECTRIC STRENGTH:** 1,500 Vrms min.@sea level.(initial value)

**OPERATING TEMPERATURE:** -30°C to 85°C.

## MATERIALS

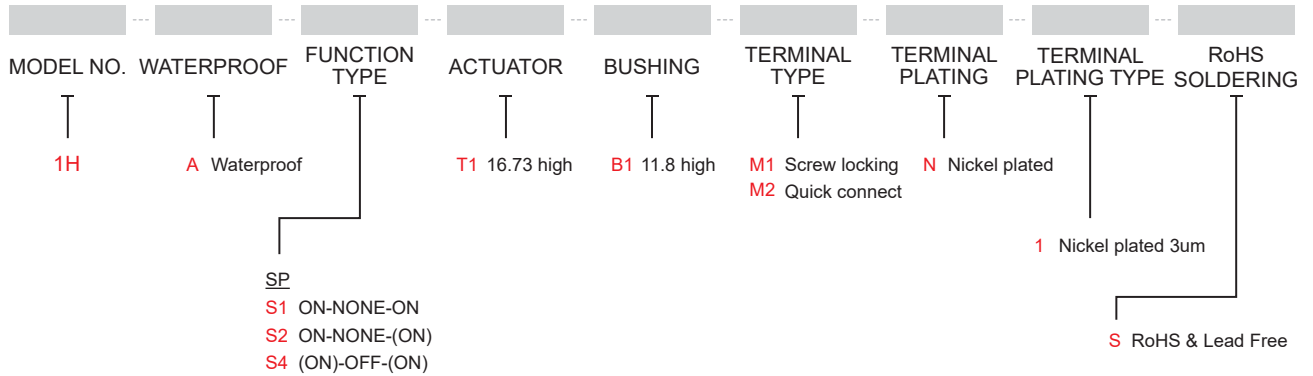
**CASE:** Diallyl phthalate (NYLON) (UL94v-0)

**ACTUATOR:** Brass, chrome plated.

**BUSHING:** Zin+Silicon.

**TERMINAL/CONTACT:** Copper.(See page 26 )

## HOW TO ORDER



EXAMPLE: 1HAS1T1B1M1N1S

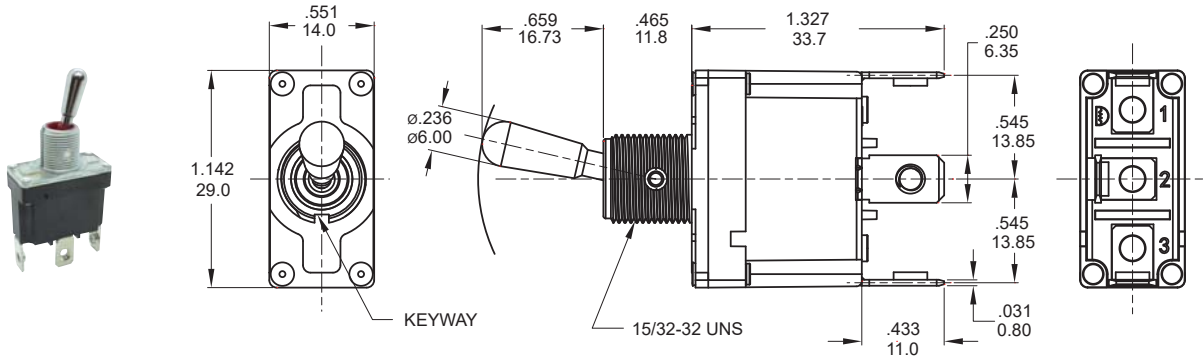


▼ SWITCH FUNCTION

NO. POLES	TYPE	SWITCH FUNCTION			CONNECTED TERMINALS / SCHEMATIC		
		POS.1	POS.2	POS.3	POS.1	POS.2	POS.3
SP	S1	ON	NONE	ON	2-3	N/A	2-1
	S2	ON	NONE	(ON)			
	S4	(ON)	OFF	(ON)		OPEN	

( )=MOMENTARY

▼ POLE OPTIONS

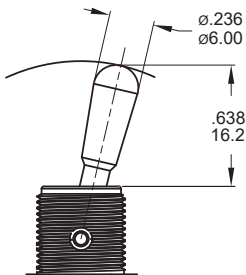


**SPDT**

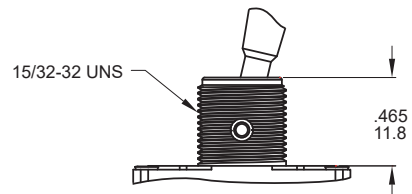
Model name. 1HAS1T1B1M1N1S

▼ ACTUATOR & BUSHING OPTIONS

**T1 STD**

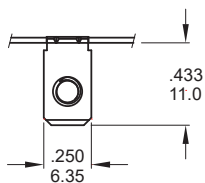


**B1 STD**



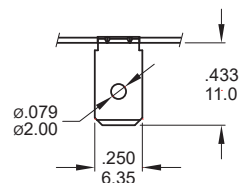
▼ TERMINAL OPTIONS

**M1 Screw locking**



.031inch(0.80mm) THK.

**M2 Quick connect**



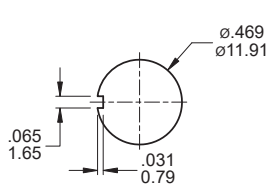
.031inch(0.80mm) THK.



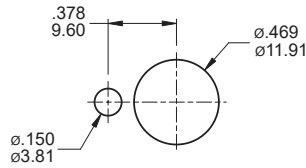
1H  
Toggle Switches

## ▼ PANEL MOUNTING

### 15/32 IN BUSHING



Without locking ring (Keyway)



With standard locking ring.

## ▼ HARDWARE

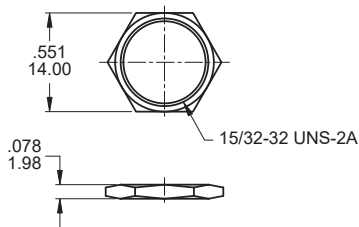
EXAMPLE: Model name. 5 Standard hardware

\* Standard : 2 nut, 1 locking ring, 1 lockwasher

\* For further information please consult sales representative.

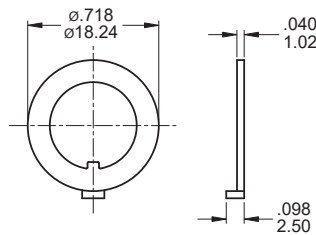
### 15/32 NUT (Std.)

Model name. MNU1M07



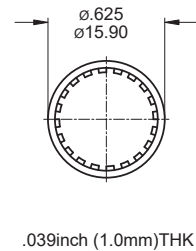
### LOCKING RING (Std.)

Model name. MNU-1M08



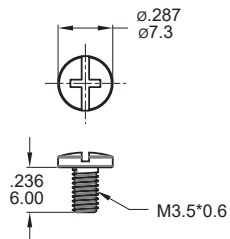
### LOCKWASHER (Std.)

Model name. MNU-1M09



### M3.5 SCREW (Std.)

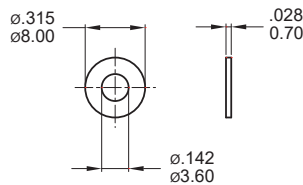
Model name. MNU-1H01



For M1 Terminal

### WASHER (Std.)

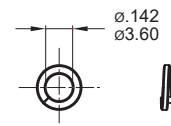
Model name. MNU-1H02



For M1 Terminal

### SPRING WASHER (Std.)

Model name. MNU-1H05



For M1 Terminal

## ▼ CONTACT & TERMINAL PLATING OPTIONS

CONTACT PLATING		TERMINAL PLATING		RATINGS
<b>N</b>	Silver	<b>1</b>	Nickel	12 Amps @125/250 VAC.

## ▼ SOLDERING PROCESS

**MANUAL SOLDERING:** Use 30 watts soldering iron and controlled the temperature at 350°.

Duration of solder immersion: Max. 5 sec.

**WAVE SOLDERING:** Recommend soldering temperature: 260 ± 5°C

Duration of solder immersion: Max. 5 sec. (PCB thickness is 1.6mm)