

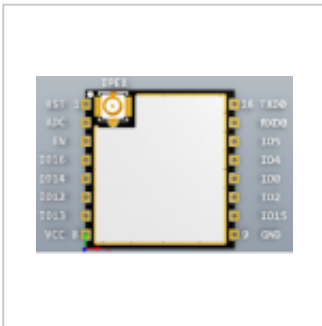
ESP8266 Core Boards

Contents

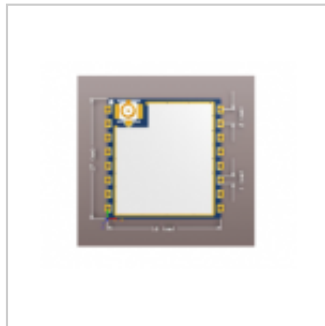
- 1 Pin Definition, Dimension, wiring
- 2 Schematic
- 3 Perferial Schematic
- 4 Documents
- 5 Obselete Boards

Pin Definition, Dimension, wiring

- ESP-07S
- Board Dimension, HxWxL :16mmx17mmx3 mm, Pads:1 mm x 1.2mm , Pads Spacing: 2mm, Reflow peak temperature 260C, 10 seconds

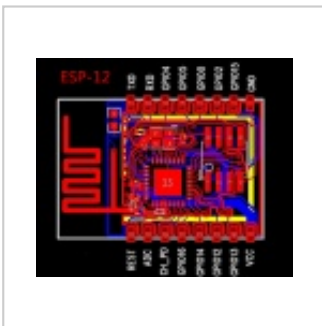


Pin definition

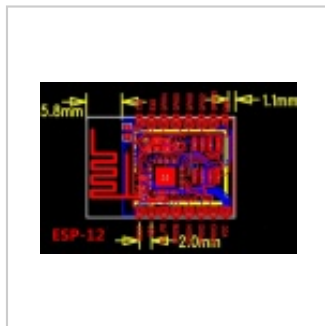


Dimension

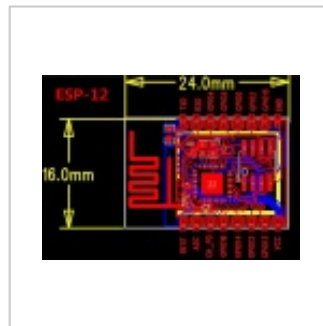
- ESP-12F, ESP-12S



ESP-12



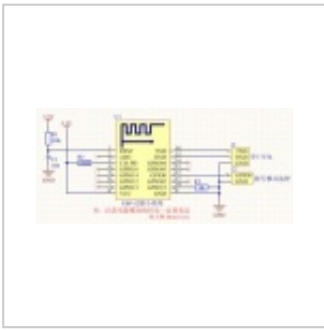
ESP-12 size



ESP-12 antenna size



esp12e dimension



Wiring of ESP-12F

- Certification



ESP-12 CE



ESP-12 FCC



ESP-12 TCB

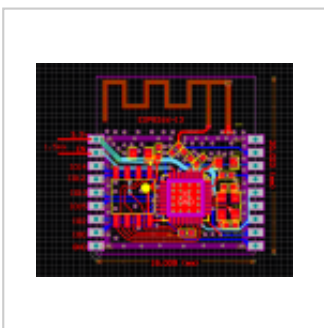


ESP-12S FCC



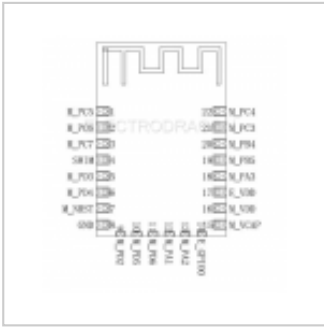
ESP-12S TCB

- ESP-13 / Wroom

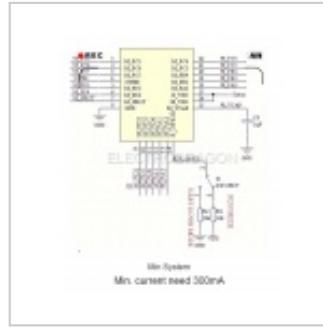


ESP-13 Pin definition

- ESP-14



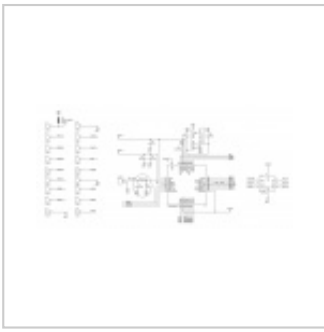
Pin Definition



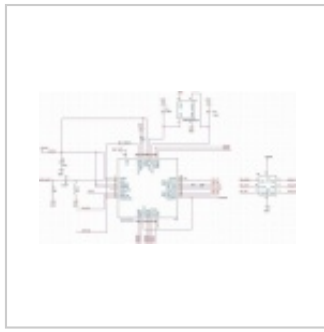
Minimum Wiring to Boot

ESP-07S	ESP-12F	ESP-14
<ol style="list-style-type: none"> 1. 1 RST Reset Module 2. 2 ADC A / D conversion result. Input voltage range of 0 ~ 1V, in the range: 0 to 1024 3. 3 CH_PD 1) high-level work; 2) the low level to turn off the power supply module; 4. 4 GPIO16 GPIO16; do wake deep sleep when receiving the RST pin. 5. 5 GPIO14 GPIO14; HSPI_CLK 6. 6 GPIO12 GPIO12; HSPI_MISO 7. 7 GPIO13 GPIO13; HSPI_MOSI; UART0_CTS 8. 8 VCC 3.3V power supply 9. 9 GND GND 10. 10 GPIO15 GPIO15; MTDO; HSPICS; UART0_RTS 11. 11 GPIO2 GPIO2; UART1_TXD 12. 12 GPIO0 GPIO0 13. 13 GPIO4 GPIO4 14. 14 GPIO5 GPIO5 15. 15 RXD0 UART0_RXD; GPIO3 16. 16 TXD0 UART0_TXD; GPIO1 	<ol style="list-style-type: none"> 1. 1 RST Reset module 2. 2 ADC A / D conversion result. The input voltage range is 0 ~ 1V, in the range of 0 ~ 1024 3. 3 EN chip enable, high active 4. 4 IO16 GPIO16; Wake-up on deep sleep when connected to RST pin. 5. 5 IO14 GPIO14; HSPI_CLK 6. 6 IO12 GPIO12; HSPI_MISO 7. 7 IO13 GPIO13; HSPI_MOSI; UART0_CTS 8. 8 VCC 3.3V power supply 9. 9 CS0 Chip Select 10. 10 MISO Slave Output Host input 11. 11 IO9 GPIO9 12. 12 IO10 GPIO10 13. 13 MOSI Master Output Slave Input 14. 14 SCLK clock 15. 15 GND GND 16. 16 IO15 GPIO15; MTDO; HSPICS; UART0_RTS 17. 17 IO2 GPIO2; UART1_TXD 18. 18 IO0 GPIO0 19. 19 IO4 GPIO4 20. 20 IO5 GPIO5 21. 21 RXD UART0_RXD; GPIO3 22. 22 TXD UART0_TXD; GPIO1 	<ul style="list-style-type: none"> ▪ 1 M_PC5 STM8 PC5 port ▪ 2 M_PC6 STM8 PC6 port ▪ 3 M_PC7 STM8 PC7 port ▪ 4 GND GND ▪ 5 M_PD3 STM8 PD3 port ▪ 6 M_PD4 STM8 PD4 port ▪ 7 M_NRST STM8 NRST port ▪ 8 GND common ground ▪ 9 M_PD2 STM8 PD2 port ▪ 10 M_PD5 STM8 PD5 port ▪ 11 M_PD6 STM8 PD6 port ▪ 12 M_PA1 STM8 PA1 port or crystal input port ▪ 13 M_PA2 STM8 PA2 port or oscillator output ▪ 14 E_GPIO0 ESP8266 GPIO0 port: 1) Default WiFi Status. 2) Operating mode selection. ▪ 15 M_VCAP STM8 VCAP port ▪ 16 M_VDD STM8 power supply pin ▪ 17 E_VDD ESP8266 power supply pin ▪ 18 M_PA3 STM8 PA3 port ▪ 19 M_PB5 STM8 PB5 port ▪ 20 M_PB4 STM8 PB4 port ▪ 21 M_PC3 STM8 PC3 port ▪ 22 M_PC4 STM8 PC4 port

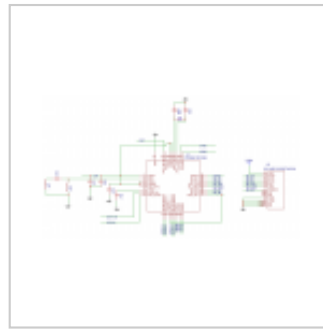
Schematic



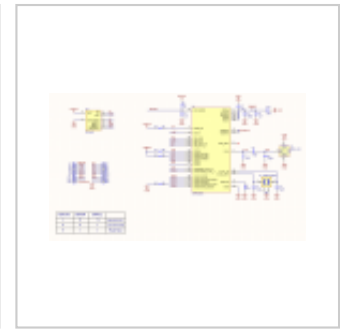
WROOM-02 schematic



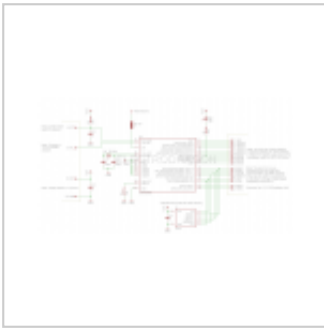
ESP-01 new



ESP -01

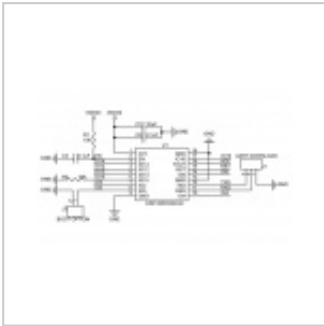


ESP-07S



ESP-12F

Perferial Schematic



WROOM-02

Documents

ESP-01

- [ESP-01 datasheet CN](#)

ESP-12F

- [ESP-12F Board, more detailed info.](#)

ESP-14

- [ESP-14 more detailed page.](#)

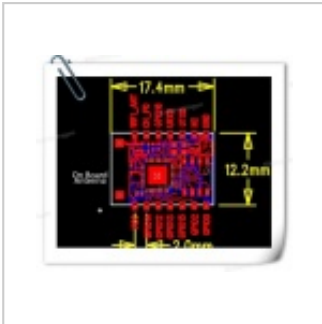
ESP-13 /Wroom

- WROOM S2 datasheet EN
- WROOM 02 Datasheet EN
- Wroom-S2 including SPI interface (http://www.espressif.com/sites/default/files/esp-wroom-s2_datasheet_en_0.pdf)

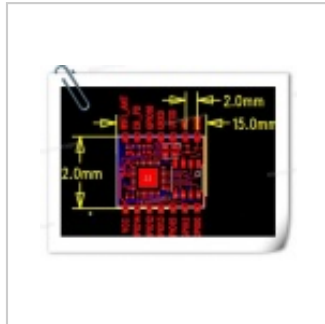
FCC ID - Grantee Code: 2AHMR:

- ESP-12S: 2AHMR-ESP12S (<https://fccid.io/2AHMR-ESP12S>)
- ESP-07S: 2AHMR-ESP07S

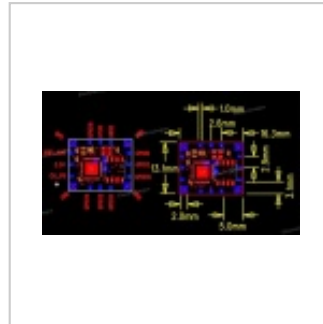
Obselete Boards



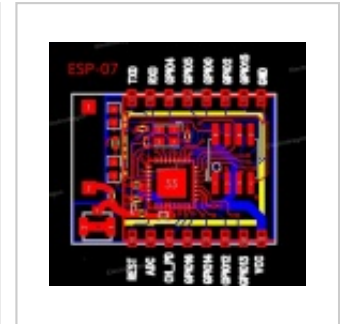
ESP-3



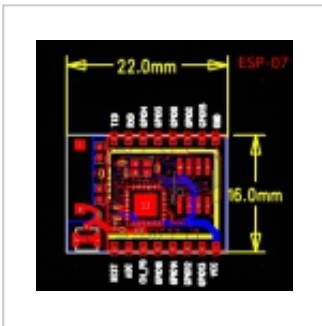
ESP-4



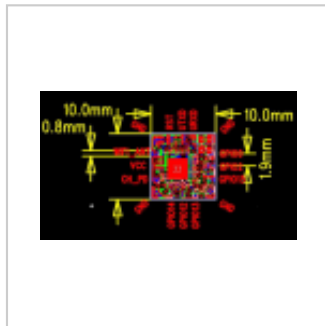
ESP-6



ESP-07



ESP-7 size



ESP-9

-
- This page was last modified on 3 May 2017, at 07:11.