

CEM 1013 TIMER MODULE MK3

The TIMER MODULE can be operated with either 12V AC or 15V DC MAX. SK1 accepts the 12V AC supply, and SK2 accepts the 15V DC supply.

The TRIGGER input is a negative going signal on SK3 to start the timing cycle. (VF CONTACTS)

The RESET input is a negative going signal on SK4 to reset the timing cycle. (VF CONTACTS)

The controlled load is connected to SK5 and has a normally open contact and normally closed contact where the load can be switched on or off.

The Timing is done with the use of LK1 and LK2. Each has section A or B and is selected by a shorting link. The middle contact is linked in position A or B in both cases.

Positions A are the minimum timing cycle and

Positions B are the maximum timing cycle selections.

Fine tuning of the required timing cycle can be done by adjusting R4.

Input Voltage is 12V AC or 15V DC

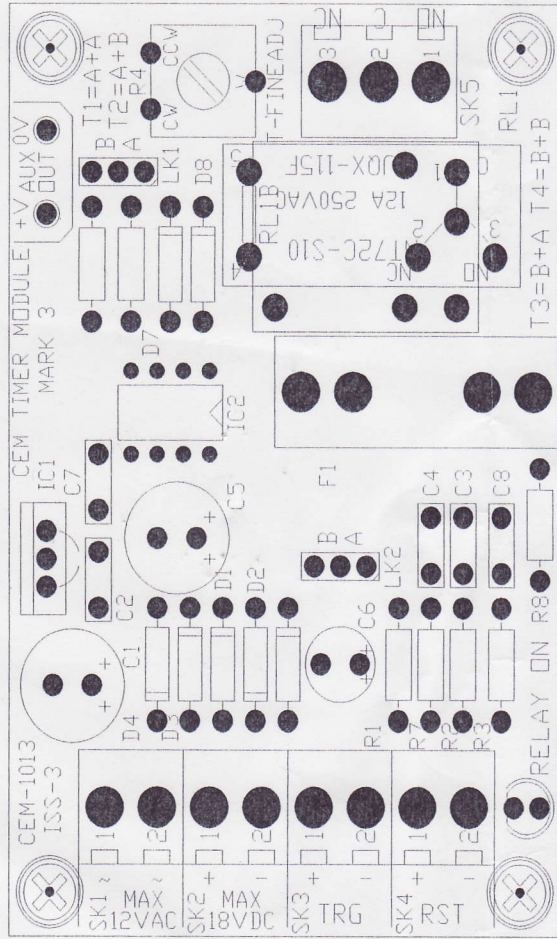
Switching: 230V AC or 28V DC at 10AMPS
(N/O or N/C terminals)

The timer is only activated once triggered, which means that after a loss of power the timer will ONLY be activated on a new trigger cycle. This is a fail safe operation. The fuse holder is supplied with a 5A fuse.

The Module has four 4mm mounting holes on a 76mm by 46mm mounting centers, and the Module size is 84mm x 54mm.

The timer module is available from All COMMUNICA Stores and distributors.

For Resellers please contact resellers@communicaco.za



TIMING POSITIONS OF THE LINKS LK1 AND LK2

T1 A+A 0.5 TO 12 SEC: LK1=A AND LK2 = A

T2 A+B 12 TO 30 SEC: LK1=A AND LK2=B

T3 B+A 2 SEC TO 4 MIN: LK1=B AND LK2=A

T4 B+B 4 MIN TO 12 MIN: LK1=B AND LK2=B

R4 ALLOWS FOR FINE ADJUSTMENTS

The positions A or B are for the shorting link positions.

Please Note:

THESE ARE ALL TYPICAL TIMING FIGURES.