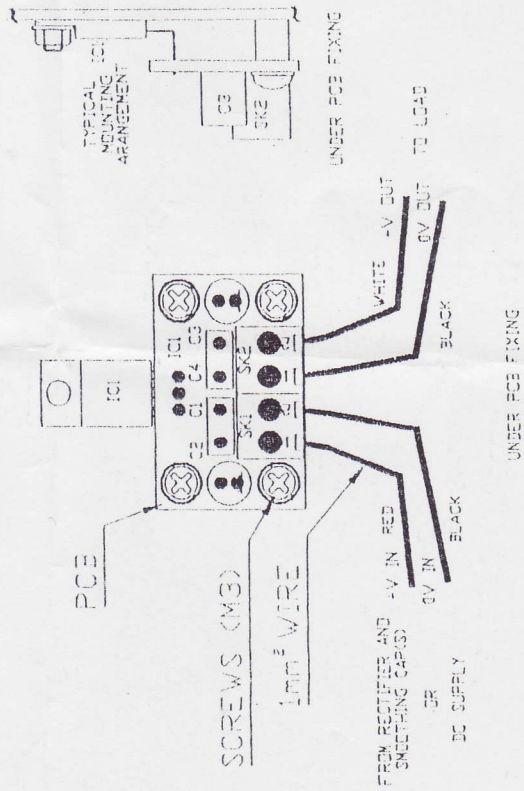


## POSITIVE FIXED VOLTAGE REGULATOR PCB

7805 POSITIVE REGULATOR	551-C0005-5V
7806 POSITIVE REGULATOR	551-C0005-6V
7809 POSITIVE REGULATOR	551-C0005-9V
7810 POSITIVE REGULATOR	551-C0005-10V
7812 POSITIVE REGULATOR	551-C0005-12V
7815 POSITIVE REGULATOR	551-C0005-15V
7818 POSITIVE REGULATOR	551-C0005-18V
7824 POSITIVE REGULATOR	551-C0005-24V

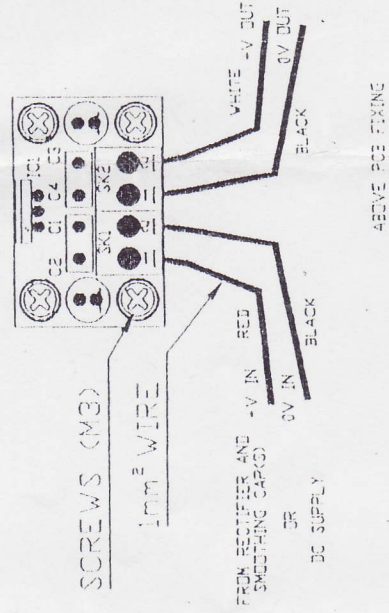
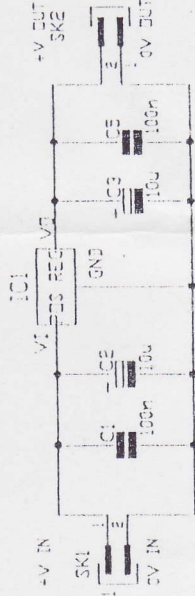
RED, BLACK INPUT AND WHITE BLACK OUTPUT



THE INPUT VOLTAGE SHOULD BE SMOOTHED AFTER RECTIFICATION.  
THE SMOOTHING CAP SHOULD BE APPROX 1000µF PER AMP  
(THE CAP IS NOT NEEDED FOR DC INPUT)

THE INPUT OUTPUT DIFFERENTIAL SHOULD NOT BE MORE THAN 5 VOLTS  
OF THE REGULATOR IN USE, AND ADEQUATE COOLING MUST BE PROVIDED  
FOR THE REGULATOR, AS THE TAB IS AT 0V IT CAN BE EARTHED

POSITIVE REGULATORS ONLY: 7805, 7806, 7809, 7810, 7812, 7815 IC'S



TYPICAL USE OF THE POSITIVE REGULATOR IC