

CONQUER Fuse Holders Feature For Easy Removal, Clearly Printed/Imprinted "FUSE" designation For Easy Panel Identification And Keyed Mounting Hole Requirement For Anti-Rotation Safety. All Fuse Holders Include Mounting Washer And Solder Lugs For Wiring.

Specification Guide Codes:

A = Item Number

B = Rated Current

C = Insulation Resistance At 500 V DC

D = Contact Resistance

E = Dielectric Strength For 60 Seconds

• **Insulating Body** : Flame Retarding UL 94 V0 Thermoplastic Material.

• **Contact** : Nickel or Tin Plated Copper Alloy.

PANEL MOUNT FUSE HOLDER FOR 5x20mm FUSE

HOT



CQ-206S

RoHS

B: 10A 250V.

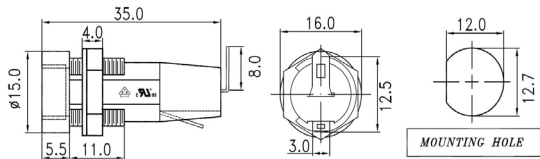
C: 100MΩ Min

D: 5mΩ At 1A DC

E: AC2000V Min.

Screw Driver Knob

Approval:



HOT



CQ-206C

RoHS

B: 10A 250V.

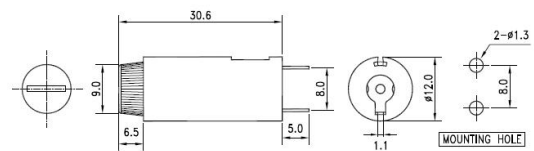
C: 100MΩ Min

D: 5mΩ At 1A DC

E: AC1000V Min.

Bayonet Knob

Approval:



CQ-206B

RoHS

B: 10A 250V.

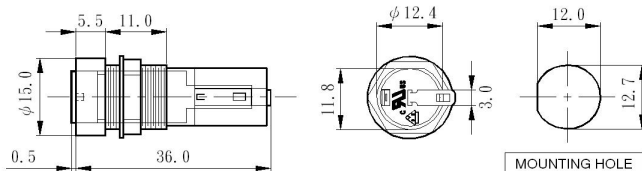
C: 100MΩ Min

D: 5mΩ At 1A DC

E: AC2000V Min.

Bayonet Driver Knob

Approval:



HOT



CQ-206CV

RoHS

B: 10A 250V.

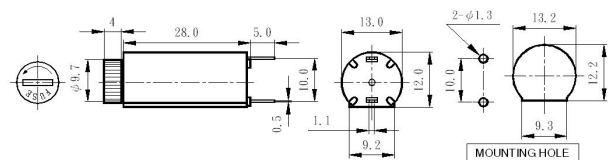
C: 100MΩ Min

D: 5mΩ At 1A DC

E: AC1000V Min.

Bayonet Knob

Approval:



HOT



CQ-206CH

RoHS

B: 10A 250V.

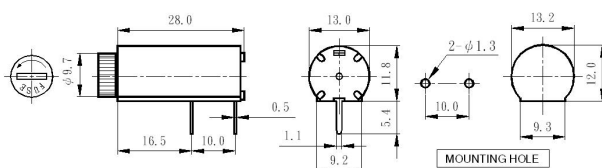
C: 100MΩ Min

D: 5mΩ At 1A DC

E: AC1000V Min.

Bayonet Knob

Approval:



CQ-206HU

RoHS

B: 10A 250V.

C: 100MΩ Min

D: 5mΩ At 1A DC

E: AC2000V Min.

Screw knob

Approval:

