

# THE POWERLINE SERIES

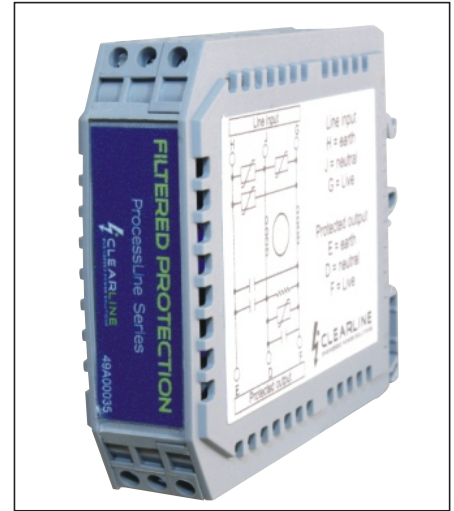
12-00224

## Filterpac mains filtration and surge protection

### Features

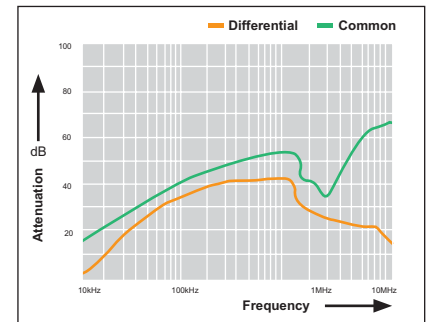
- Built in surge suppression
- High surge capability
- Compact design
- Effective filtration
- Din -rail or 'G' rail mount

An ideal mains protection device for sensitive electronics such as process control and programmable logic controllers. Fits onto a standard Din-rail and provides up to 40dB of filtration and 4500 Amps surge capability.

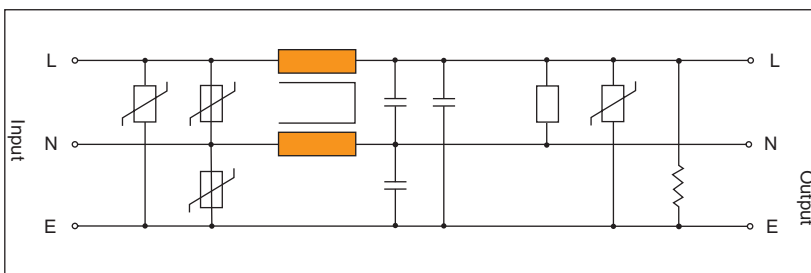


Specifications	12-00224
Max. voltage input	230VAC 50Hz
Max. load current	5A
Max. discharge current ismax 8/20	4.5kA
Temperature range	-20°C to +70°C
Filtration dB/10kHz	15dB
Filtration dB/100kHz	40dB
Filtration dB/1MHz	40dB
Standards compliance	ANSI C62.42 IEC 61643-1

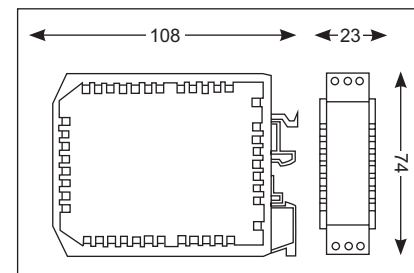
Filter response



Circuit diagram



Dimensions



### Designed and Manufactured by:

#### Clearline Protection Systems (Pty) Ltd

Roan Crescent Corporate Park North, Old Pta Road, Midrand, South Africa  
 PO. Box 5985, Halfway House, 1685  
 Tel: +27 (0) 11 848-1111  
 Fax: +27 (0) 11 314-3880  
 E-mail: sales@clearline.co.za  
 www.clearline.co.za

