

THE PROCESSLINE SERIES

4-20mA Loop powered isolator

12-00505

Features

- Eliminates ground loops
- High isolation
- Compact design
- Loop powered - no external supply required

An effective isolator for 4-20mA loop applications. Earth loops are eliminated and provides high isolation (>5kV) between line equipment. Each unit also includes short circuit protection that prevents isolation breakdown on external line applications. High accuracy (0.5% FS) ensures accurate transfer of input current.

When two devices that are powered from separate mains are combined, a ground loop is created with potentially damaging effect during electrical storms.

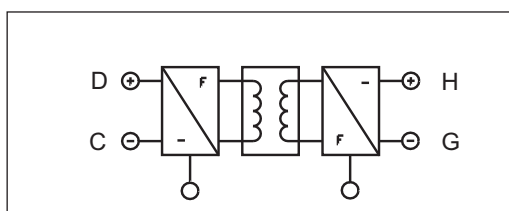
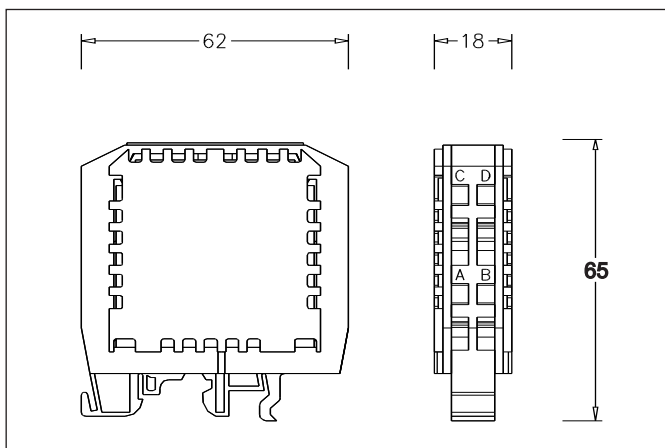
Breaking the copper connection between the two devices by means of the **Loop Powered Isolator** is the only way to prevent transient damage.



Specifications

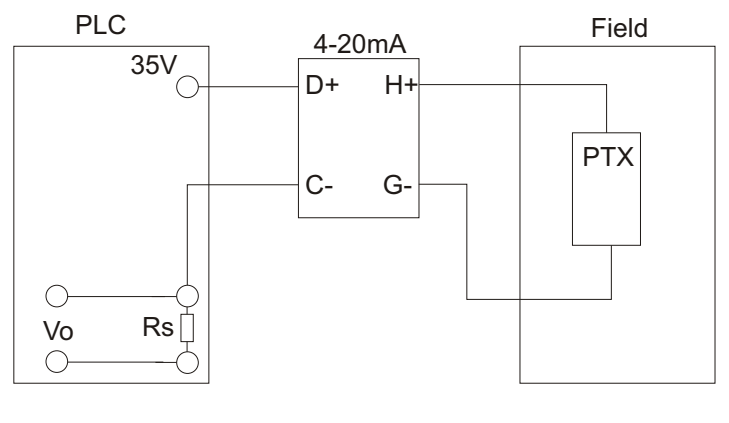
Current input range	4 - 20mA
Maximum signal voltage input	35V
Voltage drop at 20mA 250Ω (ohm) load	5V
Linearity at 250Ω load, 4-20mA	0.5%
Frequency response	DC-10Hz
Isolation between input and output	>5kV

Dimensions



Setup

- Connect the positive incoming line to the D-terminal of 12-00505 and connect the negative line to the C-terminal.
- Connect the positive terminal of the output line to pin H of the unit and connect the negative terminal to pin G of 12-00505.



Designed and Manufactured by:

Clearline Protection Systems (Pty) Ltd

Roan Crescent Corporate Park North, Old Pta Road, Midrand, South Africa
 P.O. Box 5985, Halfway House, 1685
 Tel: +27 (0) 11 848-1100
 Fax: +27 (0) 11 314-3880
 E-mail: sales@clearline.co.za
 www.clearline.co.za

