

12V TTL 200mW to 2W 445nm 450nm Laser Diode LD Power Supply Driver Board

Description:

Input Voltage: DC 8-14V

Max. Output Voltage: DC12V (adjustable)

Max. Output Current: 3A (adjustable)

Complicable Laser Diode: 200mW-2W 405/445/450/520nm (Red, Green and Blue Laser Drive Power)

Dimensions: 33 x 48mm (W x L)

Component Height: 13mm (including power board)

Feature:

Laser Diode LD Power Supply Driver Board.

For Red, Green and Blue Laser Drive Power.

For the laser driver, it can be used for various types of reduced voltage constant current source.

AC / DC can be used, regardless of positive and negative input to improve the non-professional user convenience.

Widely used in a variety of stage laser light with TTL modulation, can work long hours.

Note: Recently we have upgraded the before ones, the differences will show in the pictures, the specifications updated in Description. Please pay attention to them. Thank you :)

Package included:

1X Laser Diode Power Supply Driver Board

COMMUNICA

A World Of Electronics

www.communica.co.za



Pretoria:
Phone: +27 (012) 328 7008
salespt@communicaco.za

Head Office:
Phone: +27 (012) 657 3500
sales@communicaco.za

Cape Town:
Phone: +27 (021) 447 0949
salesct@communicaco.za

COMMUNICA

A World Of Electronics

www.communica.co.za



Pretoria:
Phone: +27 (012) 328 7008
salespt@communicaco.za

Head Office:
Phone: +27 (012) 657 3500
sales@communicaco.za

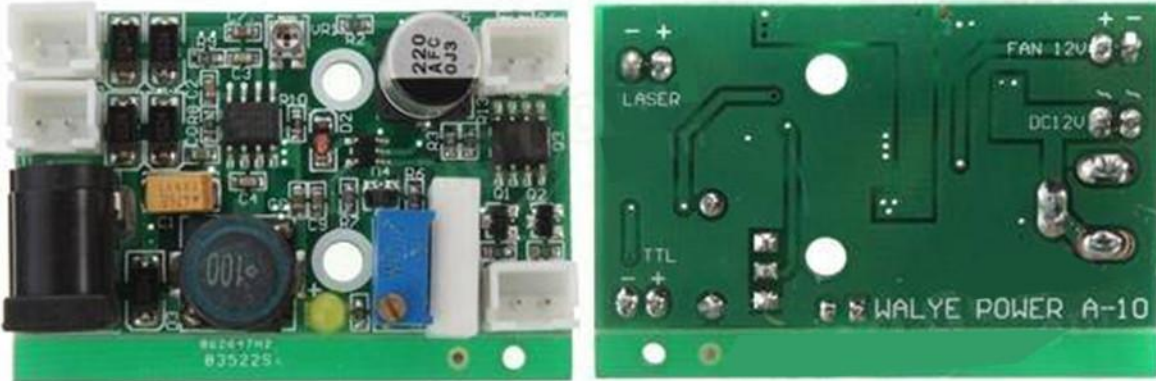
Cape Town:
Phone: +27 (021) 447 0949
salesct@communicaco.za

COMMUNICA

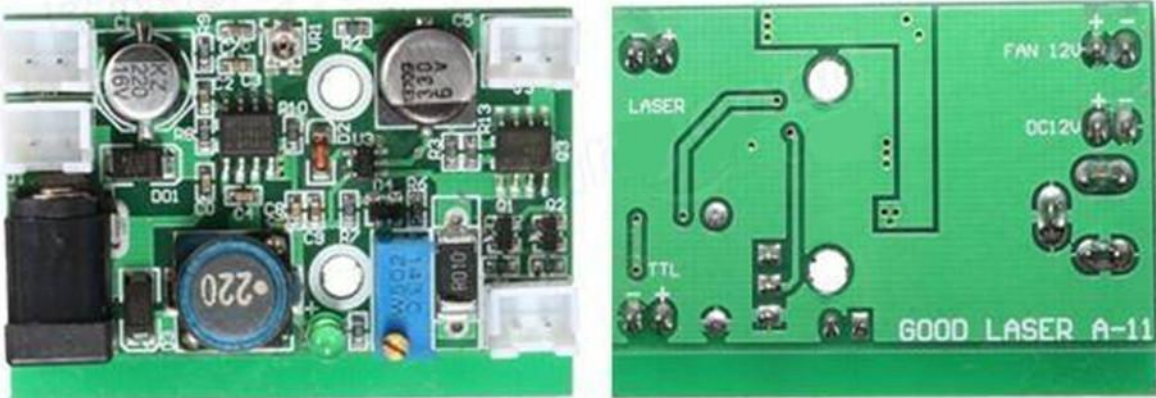
A World Of Electronics

www.communica.co.za

Before one:



Upgrade one:



Pretoria:
Phone: +27 (012) 328 7008
salespt@communicaco.za

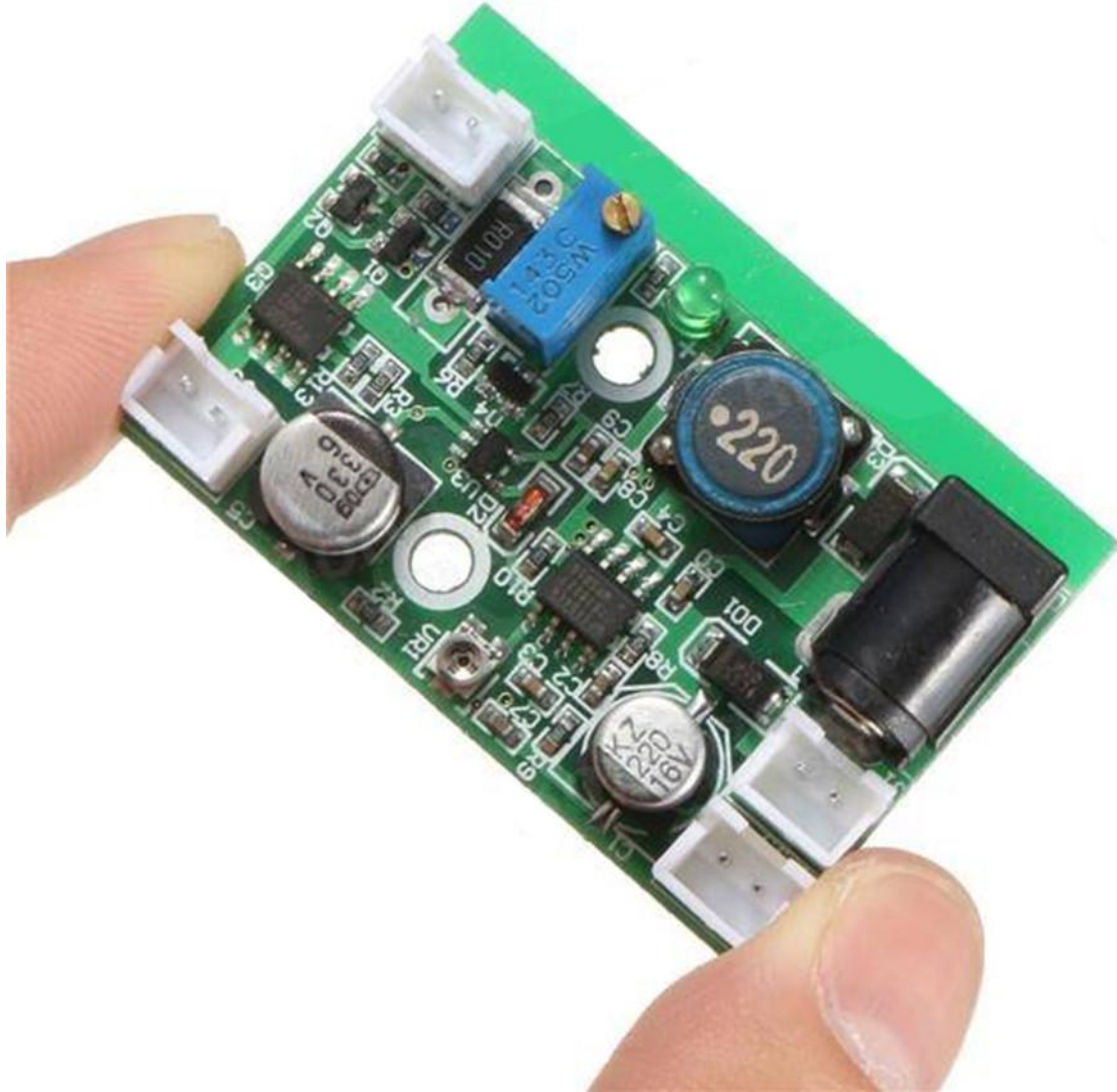
Head Office:
Phone: +27 (012) 657 3500
sales@communicaco.za

Cape Town:
Phone: +27 (021) 447 0949
salesct@communicaco.za

COMMUNICA

A World Of Electronics

www.communica.co.za



Pretoria:
Phone: +27 (012) 328 7008
salespt@communicaco.za

Head Office:
Phone: +27 (012) 657 3500
sales@communicaco.za

Cape Town:
Phone: +27 (021) 447 0949
salesct@communicaco.za

COMMUNICA

A World Of Electronics

www.communica.co.za



Pretoria:
Phone: +27 (012) 328 7008
salespt@communicaco.za

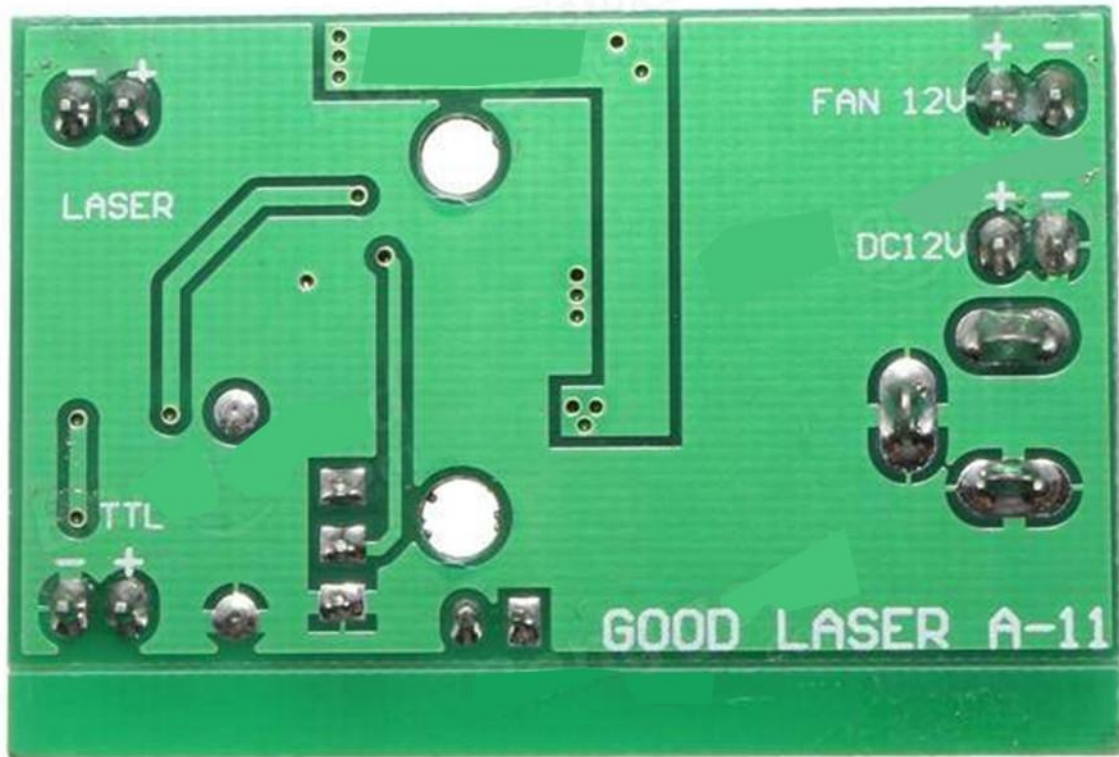
Head Office:
Phone: +27 (012) 657 3500
sales@communicaco.za

Cape Town:
Phone: +27 (021) 447 0949
salesct@communicaco.za

COMMUNICA

A World Of Electronics

www.communica.co.za



Pretoria:
Phone: +27 (012) 328 7008
salespt@communica.co.za

Head Office:
Phone: +27 (012) 657 3500
sales@communica.co.za

Cape Town:
Phone: +27 (021) 447 0949
salesct@communica.co.za