

efergy®

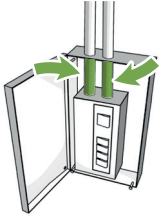


- Instantly see the cost of using energy in your home
- View your daily, weekly, monthly or average data
- Tariff rates pre-programmed (or updated manually)
- Discover and reduce your carbon footprint

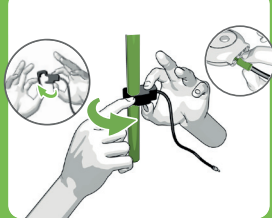
## The Energy monitor unit and how it works

The elite classic energy monitor is simple to install and easy to use. The monitor receives the data wirelessly via the transmitter and displays the demand in kilowatts of energy being consumed at any given time. The elite classic may be programmed for various rates, ensuring that the cost of your energy is accurate.

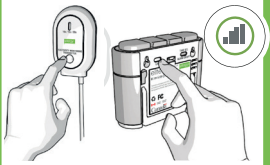
### 1. LOCATE YOUR LIVE FEED WIRE



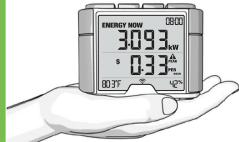
### 2. ATTACH THE SENSOR



### LINK THE TRANSMITTER



### MONITOR, REDUCE, SAVE



## THE KIT CONTAINS

- 1 x Elite Wireless Display
- 1 x Transmitter
- 1 x Mini CT Sensor
- 6 x AA Batteries