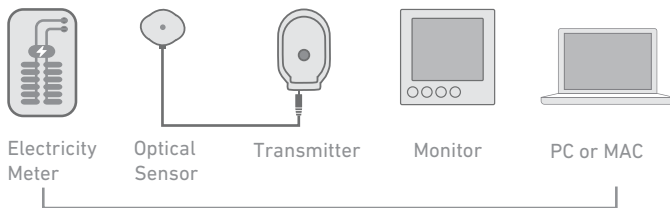




- Download your energy data to elink
- Instantly see the cost of using energy in your home
- Mains powered with battery back up for portability
- View your daily, weekly, monthly or average data
- Uses multiple tariff options
- Discover and reduce your carbon footprint
- Learn about energy with your family
- Tariff rates pre-programmed (or updated manually)

## ENERGY MONITORS - HOW THEY WORK

Our e2 Classic Energy Monitor is simple to install and easy to use. A mini current sensor is clipped on to the supply cables. A lead from the sensor is plugged into the energy transmitter, which then wirelessly sends real time data to the energy monitor. The monitor receives the data and displays the demand in kilowatts of energy being consumed at any given time. The e2 OPT may be programmed for various rates, ensuring that the cost of your energy is accurate.



## DOWNLOAD YOUR DATA

Download your energy consumption data to your PC or Mac and analyse it with our efergy elink 2.0 software. View informative graphs, print or save reports as PDF files. Data may also be viewed using Excel.



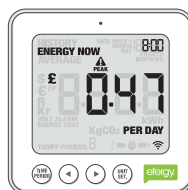
## MEMORY FUNCTION

The e2 classic memory function allows you to view your energy usage by the day, week or month. The e2 classic helps you understand your energy usage and how it changes over time.



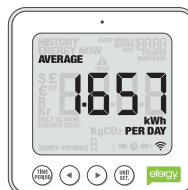
## INSTANT SAVINGS

The e2 classic updates every 6, 12 or 18 seconds. The display then shows how much energy is consumed at that moment and how much it will cost if the 'energy now' load is maintained for a period of one day.



## AVERAGE DATA

The e2 classic displays your average energy usage per day, week and month. See the impact of your energy efficient efforts, and then watch your average energy usage reduce.



## TECHNICAL INFORMATION

Model Name	e2 IR
Model Number	E2-UK
Frequency	433.5MHz
Transmission Time	6, 12 or 18 Sec
Transmission Range	40 - 70m
Sensor Voltage Range	110 - 600V
Measuring Current	50mA - 90A
Accuracy	> 90%

The backlight will be activated from 18:00 to 6:00 hours

## THE KIT CONTAINS

- 1 x e2 Wireless Energy Monitor
- 1 x Transmitter
- 1 x Mini Optical Sensor
- Batteries Supplied
- 1 x USB cable
- elink 2.0 software download from efergy.com