

Portable

# Canvio Advance

Secured in Style. Take Life Anywhere.




4 2 1  
TB TB TB

Color    

EMEA Region, Toshiba Storage Solutions – The Canvio Advance is a solid storage solution for anyone who wants quality and style at great value. Up to 4 TB of high-performance storage is packed into a stylish casing. It comes in four different colors to match personal preferences. As a real value add, it includes a backup software package and easy-to-configure security software to keep your data safe.



**2.5"** 2.5" external hard drive

 Textured finish


 SuperSpeed USB 3.2 Gen 1

 USB-powered


 Auto-backup software

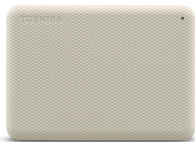
 Toshiba Storage Security Software

## Manual

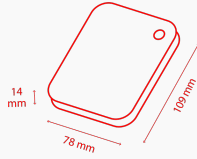
[Canvio-Advance\\_UM\\_221021.pdf](#) 

## Tools

[ToshibaStorageDiagnosticTool\\_1.30.8920.zip](#) 



# Product Specifications



## Basic Specifications

<b>Interface</b>	USB 3.2 Gen 1 (USB 2.0 compatible)
<b>Max. transfer rate</b>	~ 5.0 Gbit/s
<b>File system</b>	NTFS (for MS Windows) Requires reformatting for Mac OS
<b>Power</b>	USB bus power (max. 900mA)
<b>System requirements</b>	Formatted NTFS for Microsoft® Windows® 11, Windows® 10, Windows® 8.1, One free port of USB 3.2 Gen 1 or USB 2.0 Requires reformatting for macOS v14.5 /v13.6 /v12.7 /v11.7.1 /v10.15 /v10.14

## Box Content

<b>Box Content</b>	Canvio Advance USB 3.2 Gen 1 Cable (Type A to Micro-B ) User's manual (pre-installed on the hard drive)
--------------------	---

## Physical

<b>Weight (approx.)</b>	1 TB, 2 TB: 149 g 4 TB: 217,5 g
<b>Dimensions</b>	1 TB, 2 TB: 78 x 109 x 14 mm 4 TB: 109 x 78 x 19 mm
<b>Enclosure</b>	Textured finish

## Features

<b>Password lock software</b>	Toshiba Storage Security Software (for download)
<b>Backup Software</b>	Toshiba Storage Backup Software (for download)

# Product Range

<b>Part number</b>	<b>Capacity</b>	<b>Color</b>
HDTCA40EK3CA	4 TB	Black
HDTCA40EW3CA	4 TB	Light beige
HDTCA40ER3CA	4 TB	Red
HDTCA40EG3CA	4 TB	Green
HDTCA20EK3AA	2 TB	Black
HDTCA20EW3AA	2 TB	Light beige
HDTCA20ER3AA	2 TB	Red
HDTCA20EG3AA	2 TB	Green
HDTCA10EK3AA	1 TB	Black
HDTCA10EW3AA	1 TB	Light beige
HDTCA10ER3AA	1 TB	Red
HDTCA10EG3AA	1 TB	Green

## Logistical Information:

Box dimensions	111 x 38 x 141
Box weight (gross)	227 g (1 TB / 2 TB); 300 g (4 TB)
Master carton dimensions	123 x 205 x 165 mm
Box weight (gross)	1,27 kg (1 TB / 2 TB); 1,63 kg (4 TB)
Boxes per master carton	5
Pallet dimensions	1150 x 1150 x 130 mm
Pallet weight (net)	22 kg
Units per pallet	1350

## Contact

### **Toshiba Electronics Europe GmbH**

Hansaallee 181  
40549 Düsseldorf  
Germany