

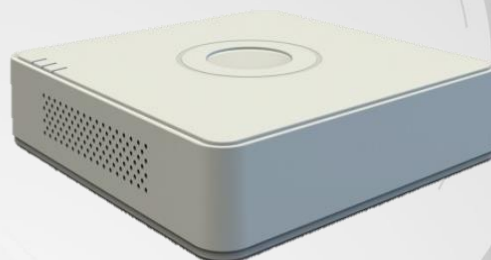
DS-7100HGHI-F1 TURBO HD DVR

Available Models

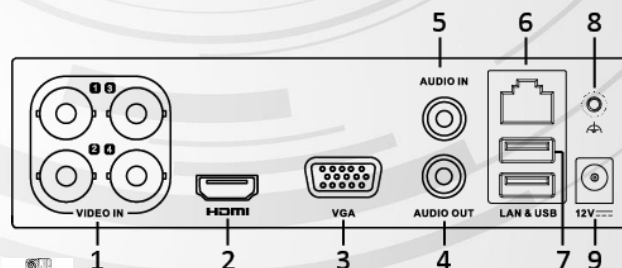
DS-7104HGHI-F1, DS-7108HGHI-F1, DS-7116HGHI-F1.

Key Features

- Connectable to HD-TVI, AHD, network and analog cameras;
- Support HIKVISION-C protocol for connecting camera over coax;
- Simultaneous HDMI and VGA outputs at up to 1080p resolution.
- New GUI and support starting record with one key;
- Instant playback for assigned camera during multi-channel live view mode;
- 4/8/16-ch synchronous playback at 720p resolution; and reverse playback for multi-camera;
- Smart playback to go through less effective information;
- Manual video quality diagnostics;
- Customization of tags, searching and playing back by tags;
- Locking and unlocking record files;
- Support HDD quota management; different capacity can be assigned to different cameras under quota mode;
- Provide 1 SATA interface for HDD with up to 6TB capacity;
- Up to 1 self-adaptive 10M/100M network interface.
- Support Hikvision DDNS (Dynamic Domain Name System);
- Network detection function;
- Support 3G dongle E173.



Physical Interfaces



NOTE The rear panel of DS-7108HGHI-F1/DS-7116HGHI-F1 provides 8/16 video input interfaces.

Index	Name
1	VIDEO IN
2	HDMI Interface
3	VGA Interface
4	AUDIO OUT, RCA Connector
5	AUDIO IN, RCA Connector
6	LAN Network Interface
7	USB Ports
8	GND
9	12VDC Power Input



DS-7100HGHI-F1 TURBO HD DVR



Specifications

Model		DS-7104HGHI-F1	DS-7108HGHI-F1	DS-7116HGHI-F1
Video/Audio input	Video input	4-ch	8-ch	16-ch
		BNC interface (1.0Vp-p, 75 Ω)		
	Supported HDTV input	720p/25Hz, 720p/30Hz		
	Supported AHD input	720p/25Hz, 720p/30Hz, CVBS		
	IP video input	1-ch up to 720P resolution	2-ch 2-ch, up to 1080P resolution	
	Audio input/ Two-way audio input	1-ch , RCA (2.0 Vp-p, 1 KΩ)		
Video/Audio output	HDMI/VGA output	1-ch, 1920 × 1080/60Hz, 1280 × 1024/60Hz, 1280 × 720/60Hz, 1024 × 768/60Hz		
	Audio output	1-ch, RCA (Linear, 1 KΩ)		
Network management	Remote connections	32	128	128
	Network protocols	TCP/IP, PPPoE, DHCP, EZVIZ Cloud P2P, DNS, DDNS, NTP, SADP, SMTP, SNMP, NFS, iSCSI, UPnP™, HTTPS, 3G		
Encoding	Video compression standard	H.264		
	Encoding resolution	720p/WD1/4CIF/VGA/CIF		
	Frame rate	1/16 fps, real time frame rate		
	Video bitrate	32 Kbps to 4 Mbps		
	Stream type	Video & Audio/Video		
	Dual-stream	Support. Sub-stream resolution: CIF/QVGA/QCIF (real time)		
	Audio compression standard	G.711u		
	Audio bitrate	64 Kbps		
	Synchronous playback	4-ch	8-ch	16-ch
Hard disk	Type	1		
	Capacity	Up to 6 TB capacity for each disk		
External interface	Network interface	1; RJ-45 10M/100M self-adaptive Ethernet interface		
	USB interface	Rear panel: 2 × USB 2.0		
General	Power supply	12 VDC		
	Consumption (without hard disks)	≤ 8W	≤ 12W	≤ 20W
	Working temperature	-10°C to +55°C (14°F to 131°F)		
	Working humidity	10% to 90%		
	Dimensions (W × D × H)	200 × 200 × 45mm (7.9 × 7.9 × 1.8 inch)		285 × 210 × 45 mm (11.2 × 8.3 × 1.8 inch)
	Weight (without hard disks)	≤ 0.8 kg (1.8 lb)		≤ 1.2 kg (2.6 lb)