

Solid State Relay

KSI480 Series Single Phase AC Output

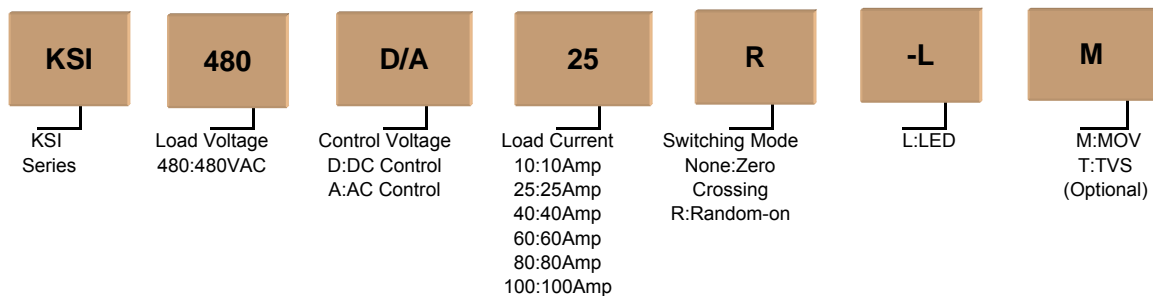


- Zero Switching or Random-on Switching
- Ratings from 10A to 100A @ 48-530VAC
- SCR Output
- AC or DC Input
- Superior Thermal Performance
- Dielectric Strength 4000VACrms
- LED Indication
- RC/MOV and TVS Protection Circuit as Optional

Product Description

KSI480 series industrial single phase relay with SCR output is widely used in many industrial applications. The relay can be used for resistive, inductive or capacitive load. The control input voltage is 4-32VDC or 90-280VAC. The output current is rated at 10A, 25A, 40A, 60A, 80A, or 100A @ 48-530VAC.

Product Selection



Description	10A	25A	40A	60A	80A	100A ⁽¹⁾
DC:4-32VDC	KSI480D10-L(M)(T)	KSI480D25-L(M)(T)	KSI480D40-L(M)(T)	KSI480D60-L(M)(T)	KSI480D80-L(M)(T)	KSI480D100-L(M)(T)
	KSI480D10R-L(M)(T)	KSI480D25R-L(M)(T)	KSI480D40R-L(M)(T)	KSI480D60R-L(M)(T)	KSI480D80R-L(M)(T)	KSI480D100R-L(M)(T)
AC:90-280VAC	KSI480A10-L(M)(T)	KSI480A25-L(M)(T)	KSI480A40-L(M)(T)	KSI480A60-L(M)(T)	KSI480A80-L(M)(T)	KSI480A100-L(M)(T)
	KSI480A10R-L(M)(T)	KSI480A25R-L(M)(T)	KSI480A40R-L(M)(T)	KSI480A60R-L(M)(T)	KSI480A80R-L(M)(T)	KSI480A100R-L(M)(T)

Technical Specification

Input Circuit

Control Voltage Range	DC Input	4-32VDC
	AC Input	90-280VAC
Minimum Turn-on Voltage	DC Input	4VDC
	AC Input	90VAC
Minimum Turn-off Voltage	DC Input	1VDC
	AC Input	10VAC
Maximum Input Current	DC Input	25mA
	AC Input	10mA

Output Circuit

Load Voltage	48-530VAC	
Maximum Turn-on Time	DC Input Random-on	1ms ⁽²⁾
	DC Input Zero-on	10ms
	AC Input	40ms

Maximum Turn-off Time	DC Input	10ms
	AC Input	40ms
Maximum Surge Current [@10ms]	10A	200A
	25A	300A
	40A	460A
	60A	860A
	80A	1280A
	100A	1400A
Maximum I ² t For Fusing [@10ms]	10A	200A ² S
	25A	450A ² S
	40A	1060A ² S
	60A	3600A ² S
	80A	8100A ² S
100A		10000A ² S
Transient Overvoltage		1200Vpk
Maximum Off-state Leakage Current [@ Rated Voltage]	10A~80A	5mA
	100A	0.1mA
Maximum On-state Voltage Drop [@ Rated Current]		1.6Vrms
Minimum Off-state dv/dt [@ Maximum Rated Voltage]		500V/μs

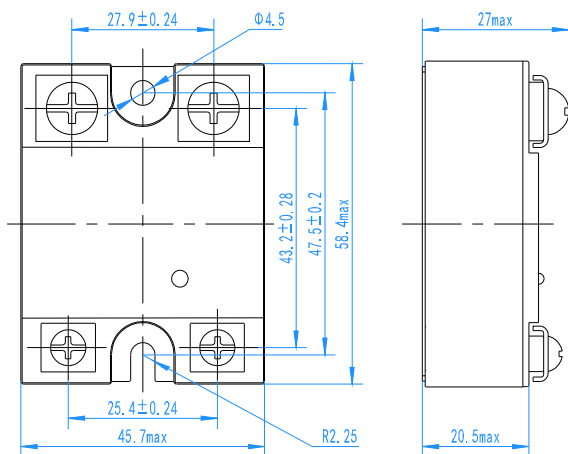
General Information

Dielectric Strength[50/60Hz]	Input/Output	≥4000Vrms
	Input,Output/Base	≥2500Vrms
Ambient Operating Temperature Range		-30°C ~ +80°C
Ambient Storage Temperature Range		-30°C ~ +100°C
Weight [Typical]		96g ⁽³⁾

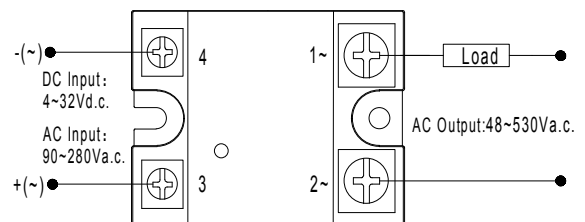
Application

High-low Temperature Chamber, Plastics Machinery, Incubation Machine, Oiling Machine, HVAC, Elevator Lighting, Fountain Controller.

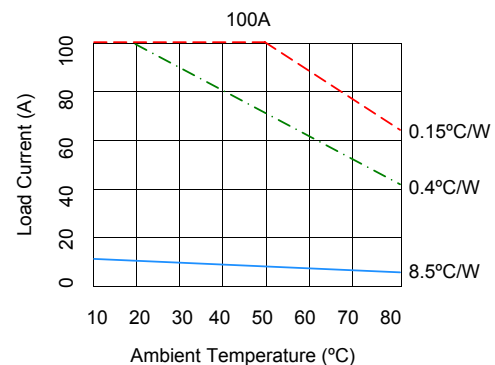
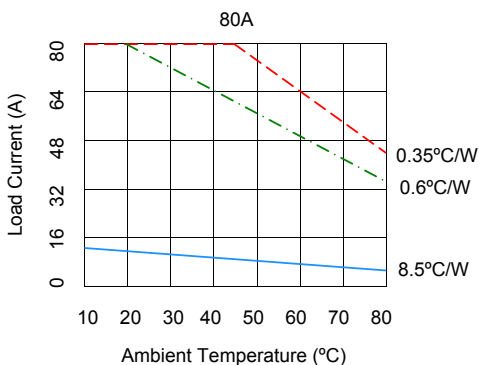
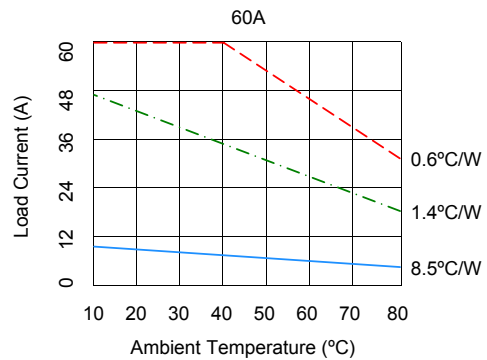
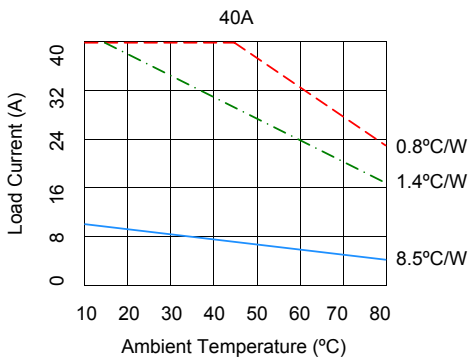
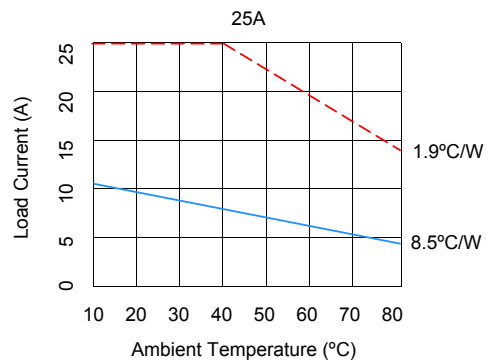
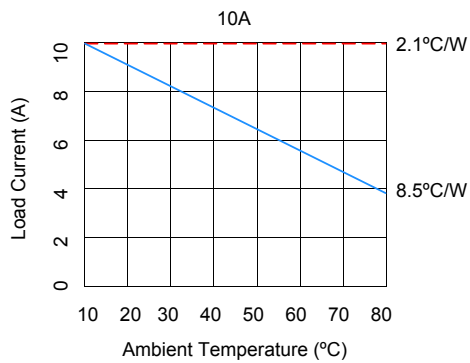
Installation



Connection



Thermal Curve



Important Notice

1. When the ambient temperature is more than 40 °C or many KSI series are installed closely together, the user should take load discount into account according to the thermal curve.
2. If the load current is more than 5A, suitable heatsink should be added to the SSR.

Product Certification



General Note:

- (1) For 100A, no RC snubber circuit
- (2) For code 084, the turn-on time is 0.02msec(DC Control Models)
- (3) For 100A, the weight is 150g
- (4) For 100A, TUV certificate is not available at present