



ATTENTION
OBSERVE PRECAUTIONS
FOR HANDLING
ELECTROSTATIC
DISCHARGE
SENSITIVE
DEVICES

P/N: LSL-063-10

Features

- THE LED LIGHT MODULE CONSISTS OF 32 HIGH-BRIGHTNESS PLCC-2 SMD LEDS.
- EACH MODULE CAN BE BROKEN DOWN INTO SUBMODULES RANGING FROM 4 TO 32 LEDS.
- EACH LED HAS A 120° VIEWING ANGLE FOR EVEN LIGHT DISTRIBUTION.
- UP TO FIVE FULL MODULES CAN BE CONNECTED TO ONE POWER SUPPLY.
- RoHS COMPLIANT.

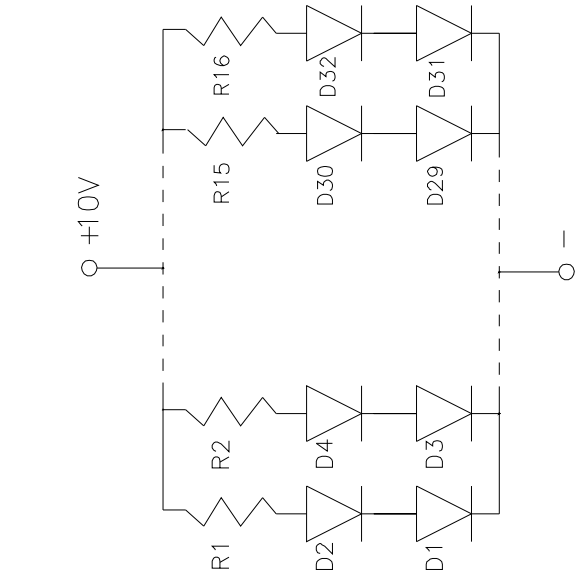
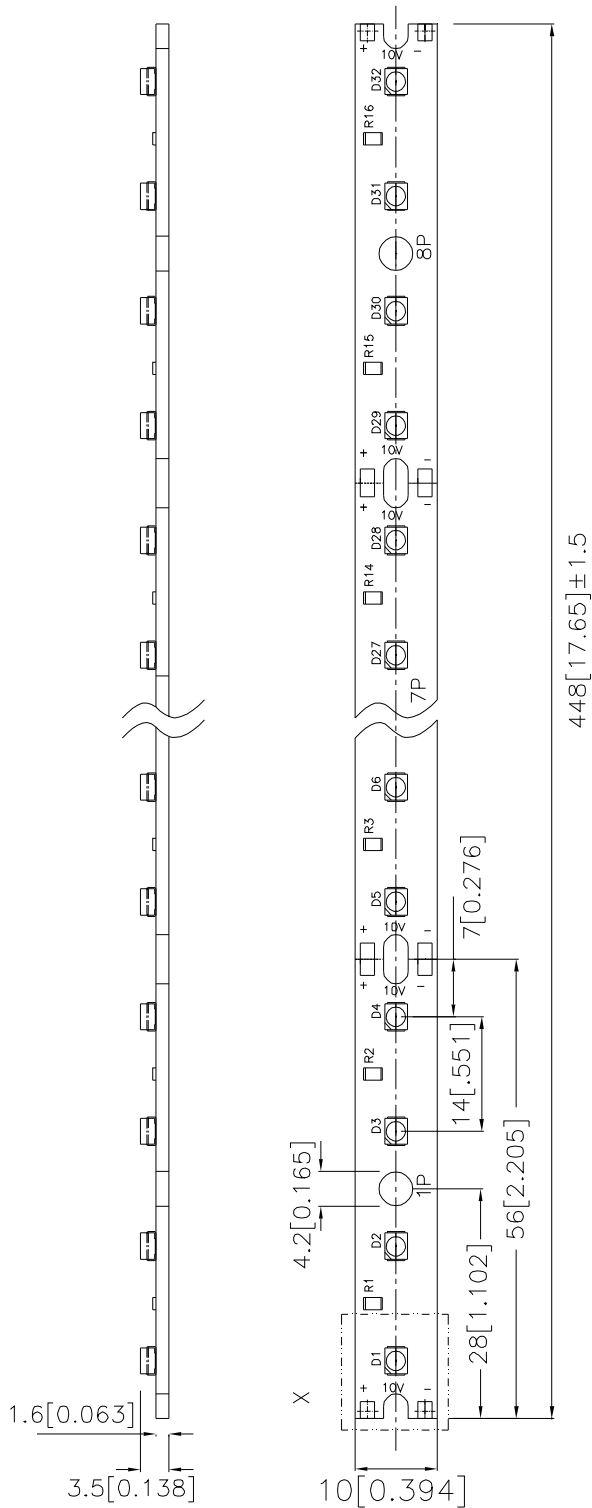
Applications

- DECORATIVE OR ACCENT LIGHTING OF DIFFUSE, TRANSPARENT, OR REFLECTIVE SURFACES.
- CHANNEL LIGHTING FOR SIGNS AND ADVERTISEMENTS.
- MARKER LIGHTING FOR STAIRS, ROUTE BOUNDARIES, OR EMERGENCY EXITS.

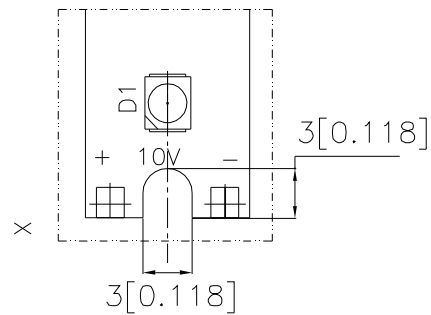
Application Notes:

- SOLDER CONNECTIONS SHOULD ONLY BE MADE ON THE DESIGNATED SOLDERING PADS MARKED ON THE MODULE PCB.
- EACH MODULE CAN BE BROKEN DOWN INTO SUBMODULES BY CUTTING ALONG THE MARKED LINE ON THE MODULE PCB. THE SMALLEST POSSIBLE SUBMODULE IS 4 LEDS. EACH SUBMODULE CAN CONSIST OF 4 TO 32 LEDS IN MULTIPLES OF FOUR.
- THE MODULE SHOULD NOT BE EXPOSED TO DUSTY OR HUMID ENVIRONMENTS. ADDITIONAL PROTECTION MAY BE NECESSARY FOR USE IN SUCH CONDITIONS.
- THE MODULE CAN BE MOUNTED USING SCREWS OR SNAP-IN SPACERS (E.G. RICHCO MODEL LCBSB SERIES.)
- WHEN THE MODULE IS MOUNTED WITH SCREWS, A NON-METALLIC WASHER SHOULD BE USED WITH THE SCREW TO PROTECT THE CIRCUIT TRACES OF THE MODULE PCB.
- PROPER ANTISTATIC PRECAUTIONS ARE NECESSARY WHEN HANDLING THE LIGHTING MODULE TO PREVENT ESD DAMAGE TO THE LEDS.

Package Dimensions



D1~D32: KA-3528PWC-G



Notes:

1. All dimensions are in millimeters (inches).
2. Tolerance is ± 0.25 (0.01") unless otherwise noted.
3. Lead spacing is measured where the leads emerge from the package.
4. Specifications are subject to change without notice.

Operating Data (Ta=25°C)

Parameter	Symbol	Value	Unit
Colour of Emission	-	White	-
Number of LEDS	-	32	-
Nominal Wavelength (typ)	λ_{dom}	-	nm
Chromaticity coordinates according to CIE 1931 (typ) [1]	X	0.33	-
	Y	0.34	
Temperature coefficient of λ_{dom} (typ)	$TC_{\lambda_{dom}}$	-	nm/°C
Temperature coefficient chromaticity coordinates (typ)	TC_x	-0.1	$10^{-3}/^{\circ}C$
	TC_y	-0.2	$10^{-3}/^{\circ}C$
Spectral line half-width (typ)	$\Delta \lambda_{1/2}$	-	nm
Luminous Intensity (typ) (Per LED) [2]	I_v	600	mcd
Temperature coefficient of luminous intensity (typ)	TC_{I_v}	-0.17	%/°C
Viewing Angle (typ) (Per LED)	2ϕ	120	°
Nominal operating voltage	V_B	+10.5	V _{DC}
Operating Current (typ)	I_B	340	mA
Temperature coefficient of I_B (typ)	TC_{I_B}	+0.08	%/°C
Nominal power consumption	P	3.6	W
Weight (approx.)	M	12.5	g

Notes:

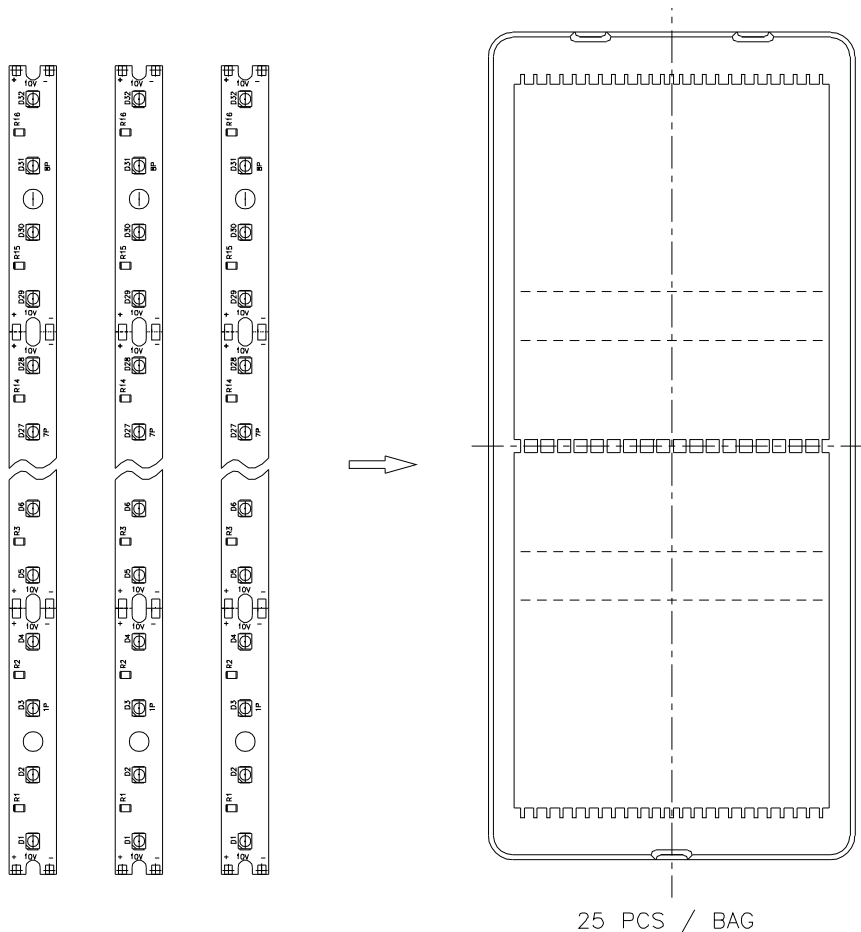
1. Chromaticity Coordinates X, Y: +/-0.02.
2. Luminous Intensity/ Luminous Flux: +/-15%.


Maximum Ratings

Parameter	Symbol	Value	Unit
Operating Temperature	T_A	-30~+55	°C
Storage Temperature	T_{STG}	-40~+85	°C
Maximum current when connected in parallel	I_{Bmax}	1.6	A
Operating Voltage	V	+10~+11	V _{dc}
Power Consumption	P_{tot}	4.1	W

PACKING SPECIFICATIONS

LSL-063-10



Kingbright				
Q.C.	<table border="1"> <tr> <td style="text-align: center;">QC</td> </tr> <tr> <td style="text-align: center;">xxx xx xxxx</td> </tr> <tr> <td style="text-align: center;">PASSED</td> </tr> </table>	QC	xxx xx xxxx	PASSED
QC				
xxx xx xxxx				
PASSED				
TYPE NO : LSL-063-xxx				
QUANTITY : 25 pcs				
S/N : xxx	CODE: XX			
LOT NO : 				
MADE IN CHINA	RoHS Compliant			