

# MaxLi<sup>+</sup>®

Battery Charger  
Intelligent / Smart **6/12V 2/10A**



## RS-Z10.0ALCD

BATTERY CHARGE + MAINTAINER



### SAFETY PROTECTION

- ✓ Reverse polarity
- ✓ Overheat
- ✓ Short circuit
- ✓ Low voltage
- ✓ Overcharge
- ✓ Reverse polarity



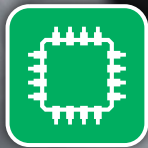
### 8-STEP SMART CHARGER

- ✓ Suitable for most battery types
- ✓ Cars
- ✓ Boats
- ✓ Equipment



### MAINTAIN

- ✓ Safely leave connected to battery indefinitely
- ✓ Extended battery life
- ✓ Optimal performance with zero overcharge



Intelligent charging system



Winter mode



LCD indication



Battery Charge Indicator



220-240 V~50Hz



# MaxLi<sup>+</sup>®

Battery Charger  
Intelligent / Smart 6/12V 2/10A

## RS-Z10.0ALCD

6V/12V



### TECHNICAL DATA

INPUT	220-240VAC, 50-60Hz
OUTPUT	180W
CHARGER TYPE	8-Step Smart Charger
TYPE OF BATTERIES	6V/12V Lead-acid batteries (WET, MF, Ca/Ca, AGM and GEL)
CHARGING CURRENT	2/10 AMPS
BATTERY CAPACITY	4 - 200Ah
INSULATION CLASS	IP65
LCD INDICATION	Green = Charging; Blue = Full
CABLE LENGTH	1,5 m
WARRANTY	5 years

### 8-STEP CHARGING



Auto | Marine | RV | Powersport | Lawn & Garden

- 1 Status Check:** After the selection of the charging mode the charger checks the status of the battery (voltage detection).
- 2 Rescue Function:** Saves the battery with minimal voltage and current.
- 3 Rescue Function:** Saves the battery with impulse charging.
- 4 Bulk:** Charging with maximum charging current and adjusted voltage.
- 5 Absorption:** Charging with steady charging voltage until the capacity has reached 100% again.
- 6 Charging Performance Check:** Charging complete with temporary surveillance of the charging performance.
- 7 Post Charging:** Charge optimization.
- 8 Maintenance Charge:** Battery capacity will be kept at 95-100% and the battery voltage will be supervised. If necessary the charger will give an impulse to the battery to keep it completely charged.