

MaxLi⁺®

Battery Charger Intelligent / Smart **6/12V 4A**



RS-Z4.0ALCD

BATTERY CHARGE + MAINTAINER



SAFETY PROTECTION

- ✓ Reverse polarity
- ✓ Overheat
- ✓ Short circuit
- ✓ Low voltage
- ✓ Overcharge



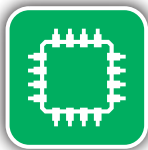
8-STEP SMART CHARGER

- ✓ Suitable for most battery types
- ✓ Cars
- ✓ Boats
- ✓ Equipment



MAINTAIN

- ✓ Safely leave connected to battery indefinitely
- ✓ Extended battery life
- ✓ Optimal performance with zero overcharge



Intelligent charging system



Winter mode



LCD indication



Battery Charge Indicator



220-240 V~50Hz

MaxLi⁺

Battery Charger
Intelligent / Smart

6/12V 4A

RS-Z4.0ALCD

6V/12V



TECHNICAL DATA

INPUT	220-240VAC, 50-60Hz
OUTPUT	70W
CHARGER TYPE	8-Step Smart Charger
TYPE OF BATTERIES	6V/12V Lead-acid batteries (WET, MF, Ca/Ca, AGM and GEL)
CHARGING CURRENT	4 AMPS
BATTERY CAPACITY	3 - 120 Ah
INSULATION CLASS	IP65
LCD INDICATION	Green = Charging
CABLE LENGTH	1,5 m
WARRANTY	5 years

8-STEP CHARGING

1
2
3
4
5
6
7
8

Status Check: After the selection of the charging mode the charger checks the status of the battery (voltage detection).

Rescue Function: Saves the battery with minimal voltage and current.

Rescue Function: Saves the battery with impulse charging.

Bulk: Charging with maximum charging current and adjusted voltage.

Absorption: Charging with steady charging voltage until the capacity has reached 100% again.

Charging Performance Check: Charging complete with temporary surveillance of the charging performance.

Post Charging: Charge optimization.

Maintenance Charge: Battery capacity will be kept at 95-100% and the battery voltage will be supervised. If necessary the charger will give an impulse to the battery to keep it completely charged.



Auto | Marine | RV | Powersport | Lawn & Garden