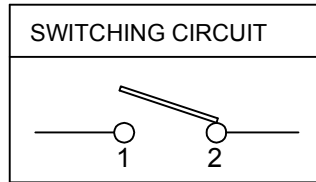
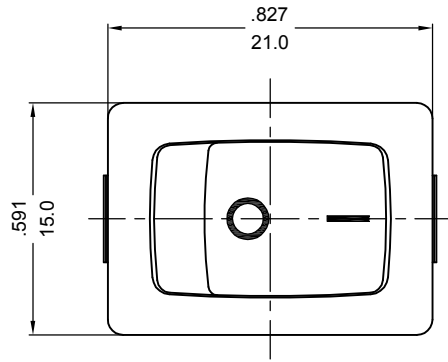


嘉尼企業股份有限公司 CANAL ELECTRONIC CO.,LTD.



ROCKER SWITCH MODEL MR2 SERIES

RATING:16A 30VDC~T55 (cURus)

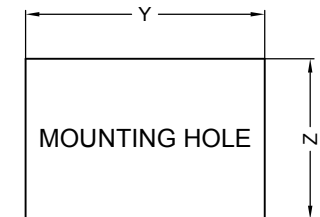
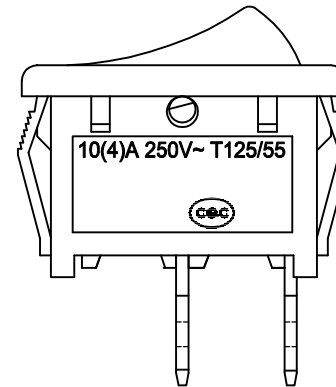
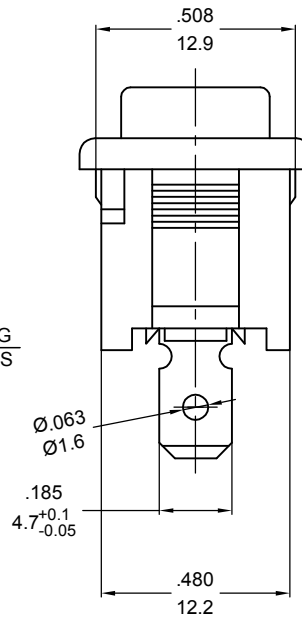
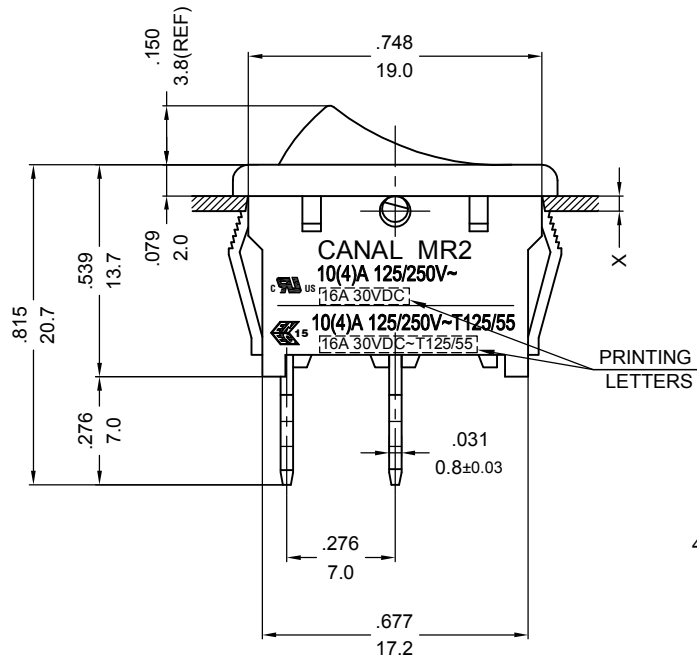
16A 30VDC~T125/55 (ENEC15)

10(4)A 250V~T125/55 (CQC)

DIELECTRIC VOLTAGE-WITHSTAND:1,500VAC FOR 1 MINUTE

INSULATION RESISTANCE:DC 500V 100MΩ (MIN.)

CONTACT RESISTANCE:20mΩ INITIAL (MAX.)



X(PANEL THICKNESS)	Y(CUTOUT DIMENSION)	Z(CUTOUT DIMENSION)
0.75~1.25mm	19.2 ^{+0.1} ₋₀ mm	12.9 ^{+0.15} ₋₀ mm
1.25~2mm	19.4 ^{+0.1} ₋₀ mm	12.9 ^{+0.15} ₋₀ mm
2~3mm	19.8 ^{+0.1} ₋₀ mm	12.9 ^{+0.15} ₋₀ mm

NOTE: TOLERANCES UNLESS OTHERWISE SPECIFIED:±.012/0.3 (in/mm)

PANEL CUTOUT DIMENSION TABLE

REVISION	DESCRIPTION	REVISED BY	TOLERANCES		ANGLE 1/2°	UNIT	mm	PART NAME	DWG NO
△			DRAWN BY	楊偉韶	DESIGNED BY	蔡劍	SCALE	2/1	MR2 SPEC DRAWING
△			CHECKED BY		APPROVED BY		DATE	2023.05.19	
△	2023.05.19 首次出圖.	楊偉韶					PART NO	MR2-110C5W-NBBD-20NC	S9315A