

# Network Video Recorder

32 Channel Network Device recorder.



SN-NVR10-04E3-032NS

All Browser Support



Flash Video Technology



Client Software PC & MAC



## Special Features

## Remote Access

- High Profile H-264 High profile 4.2
- Recording 32 Channel 5MP/3MP/1080P/720P
- Full support 4\* HDD max 16TB
- High Definition Output HDMI && VGA
- Simple to use GUI with mouse control
- Auto add Devices & Auto schedule recording
- 100% Stability with Embedded Linux OS.

- Playback and Live from Web browser
- PC & MAC remote client application
- Smart Phone iOS or Android free App
- Download from iTunes / Google play

Full Remote NVR configuration available with all software platforms. With play- back and live viewing.

LiveVideo

Playback

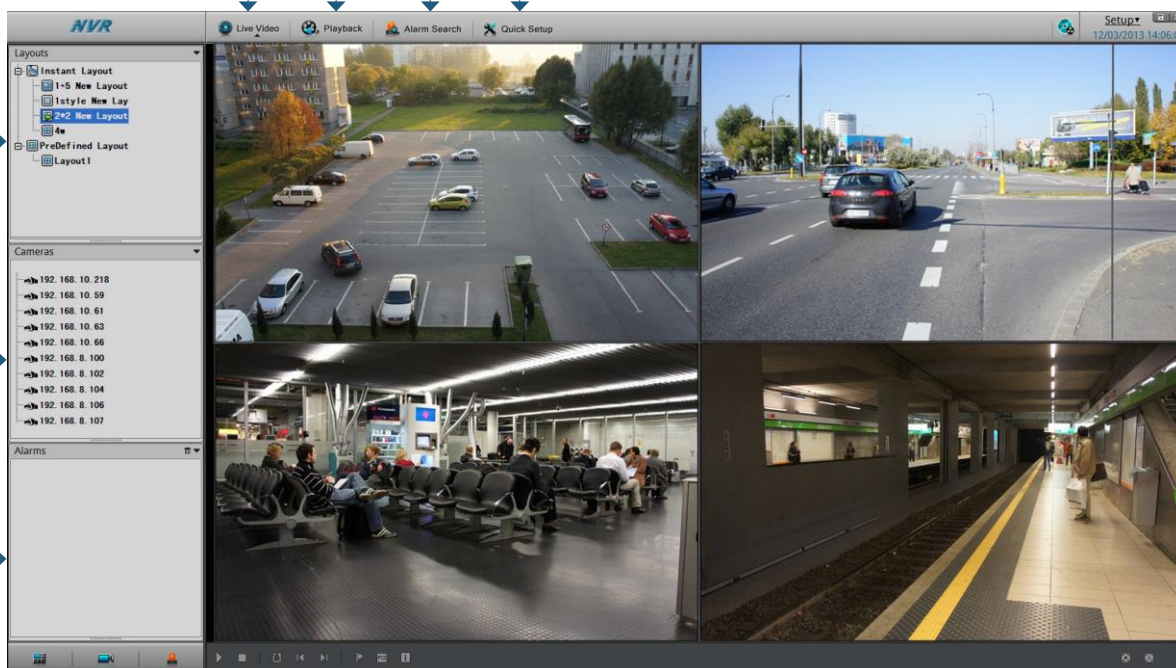
Alarm Search

Quick Setup

Layout

Devices

Alarms



## VIDEO

### RECORDING

32ch Channel 5MP/3MP/1080P/720P

### OUTPUT DISPLAY

Single screen: 1x1080p /720p with **Tour** Quad display of 1080p / 720p resolutions  
Split screen: 1/4//6/8/9/16 layout for 1080p/720p Live video

### RESOLUTIONS

VGA resolution: 1024x768, 1280x1024, 1600x1200 ; HDMI resolution: 1280x720p, 1920x1080p

### DECODING

NTSC:32ch 25fps 1080p/720p  
PAL: 32ch 30fps 1080p/720p

### PLAYBACK

4ch 5M/3M/1080P/720P

### VIDEO DECODING

Up to H.264 (ISO/IEC 14496-10) high profile to level 4.2

### RATE CONTROL

CBR (Constant Bit Rate), VBR (Variable Bit Rate) as defined by IP Device

### STREAM INPUT

720P: Standard 3Mbps 720P (main stream) or VGA quality (sub stream);  
5M/3M/1080P: Standard 4.5Mbps 1080P (main stream) or VGA quality (sub stream);

### MAX. RECORDING

## STORAGE

### HDD

4 x HDD Max 16TB with each HDD 4TB

### RECORDING TIME

720p: average bit-rate 3Mbps with 32Channel Up to 15Days  
1080p/3MP/5MP: average bitrate 4.5Mbps with 32Channel Up to 10Days

### RECORDING

Constant Recording / Motion detection Recording.

## CONNECTIONS

### POWER SWITCH

Power on from connected power source / power off software control with authentication.

### VIDEO OUTPUTS

One VGA Output ,One HDMI Output

### AUDIO IN / OUT

3.5mm linear audio output ,support G711\_A/G711\_U

### USB

2x USB2.0 interface, respectively as a backup and USB mouse. Support USB Keyboard for Name Input

## NETWORK

### WEB SERVER

Embedded server supporting Flash Video RTMP server (Multi Browser Support) 4ch Live cameras real-time.

### PROTOCOLS

RTP/RTCP, TCP/UDP, HTTP, DHCP, DNS, NTP, RTMP, Sunell SDK, ONVIF

### INTERFACE

2 RJ45 10M/100M/1000M network port

## AUDIO

### OUTPUT

Support for the rear panel LINE OUT

### RECORDING

G711 A-Law, G711 U-Law from Camera

## PHYSICAL

### POWER

AC110/220V,47-63HZ

### POWER CONSUMPTION

Max 15W without HDD,USB device ;Max 40W with 4HDD

### COOLING

Main chip cooling using heat sinks, plus thermal controlled intelligent cooling fan.

### OP HUMIDITY

5% to 90%

### OP TEMPERATURE

0°C—45°C

### APPROVALS

CE / FCC / RoHS Compliant

### DIMENSIONS LWH

Chassis: 440mm x 435mm x 89.8mm

### WEIGHT

7.2Kg No HDD installed.

## SOFTWARE

### SUPPLIED

Existing NVR Client Application allows full remote configuration of NVR devices  
NEW PC Client Application for remote monitor / playback of NVR device  
iOS / Android app. Full device settings live monitoring & recording playback from NVR.