

Network Video Recorder

8 Channel Network Device recorder.



SN-NVR10-02E2-008NSEP8

All Browser Support



Flash Video Technology



Client Software PC & MAC



Special Features

- High Profile H-264 High profile 4.2
- Recording 8 Channel 1080P/720P
- Full support 2* HDD max 8TB
- 8ch POE support
- High Definition Output HDMI / VGA
- Simple to use GUI with mouse control
- Auto add Devices & Auto schedule recording
- 100% Stability with Embedded Linux OS.

Remote Access

- Playback and Live from Web browser
- PC & MAC remote client application
- Smart Phone iOS or Android free App
- Download from iTunes / Google play

Full Remote NVR configuration available with all software platforms. With play- back and live viewing.

LiveVideo

Playback

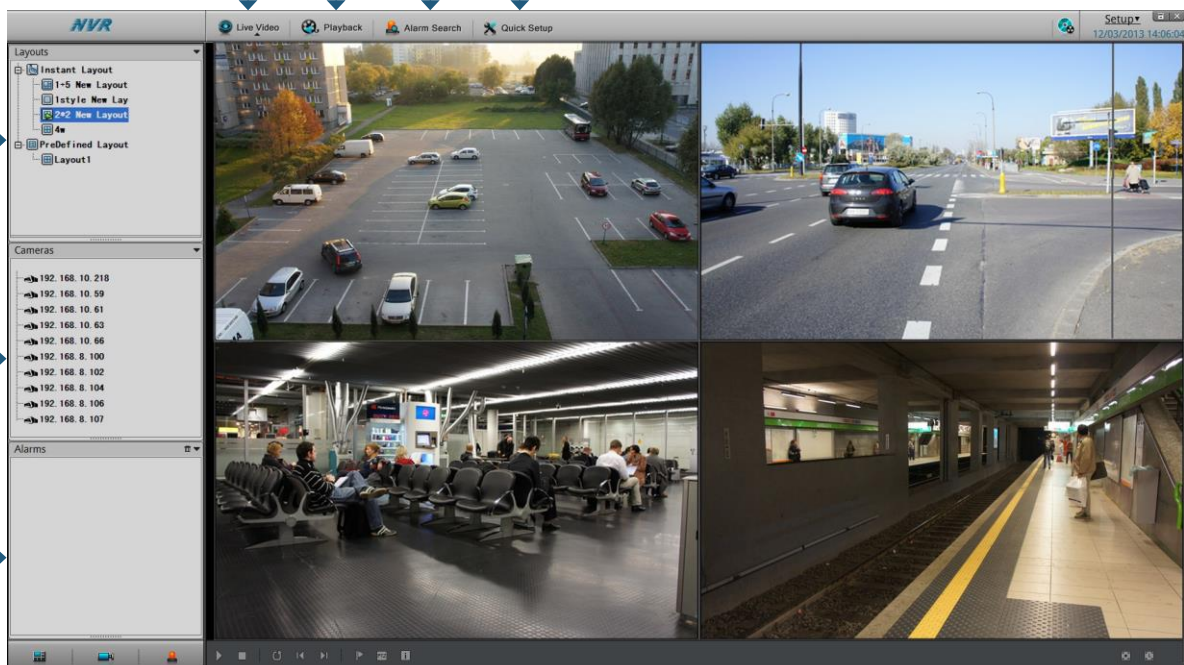
Alarm Search

Quick Setup

Layout

Devices

Alarms



VIDEO

RECORDING

8ch Channel 1080P/720P

OUTPUT DISPLAY

Single screen: 1x1080p /720p with **Tour** Quad display of 1080p / 720p resolutions
Split screen: 1/4//6/8/9 layout for 1080p/720p Live video

RESOLUTIONS

VGA resolution: 1024x768, 1280x1024, 1600x1200 ; HDMI resolution: 1280x720p, 1920x1080p

DECODING

NTSC:8ch 25fps 1080p/720p
PAL: 8ch 30fps 1080p/720p

PALYBACK

4CH 1080p/720p

VIDEO DECODING

Up to H.264 (ISO/IEC 14496-10) high profile to level 4.2

RATE CONTROL

CBR (Constant Bit Rate), VBR (Variable Bit Rate) as defined by IP Device

STREAM INPUT

720P: Standard 3Mbps 720P (main stream) or VGA quality (sub stream);
1080P: Standard 4.5Mbps 1080P (main stream) or VGA quality (sub stream);

MAX. RECORDING

STORAGE

HDD

2 x HDD Max 8TB with each HDD 4TB

RECORDING TIME

720p: average bit-rate 3Mbps with 8Channel Up to 30Days
1080p: average bitrate 4.5Mbps with 8Channel Up to 21Days

RECORDING

Constant Recording / Motion detection Recording.

CONNECTIONS

POWER SWITCH

Power on from connected power source / power off software control with authentication.

VIDEO OUTPUTS

One VGA Output ,One HDMI Output

AUDIO IN / OUT

3.5mm linear audio output ,support G711_A/G711_U

USB

2x USB2.0 interface, respectively as a backup and USB mouse. Support USB Keyboard for Name Input

NETWORK

WEB SERVER

Embedded server supporting Flash Video RTMP server (Multi Browser Support) 4ch Live cameras real-time.

PROTOCOLS

RTP/RTCP, TCP/UDP, HTTP, DHCP, DNS, NTP, RTMP, Sunell SDK, ONVIF

INTERFACE

1 RJ45 10M/100M network port ,8 RJ45 10M/100M POE network port

AUDIO

OUTPUT

Support for the rear panel LINE OUT

RECORDING

G711 A-Law, G711 U-Law

PHYSICAL

POWER

100-240V/47-63Hz 3A

POWER CONSUMPTION

Max 6W without HDD ,MAX 18W with 2 HDD

COOLING

Main chip cooling using heat sinks, plus thermal controlled intelligent cooling fan.

OP HUMIDITY

0% to 90%

OP TEMPERATURE

0°C—45°C

APPROVALS

CE / FCC / RoHS Compliant

DIMENSIONS LWH

Chassis: 372mm x 305mm x 44.45mm

WEIGHT

3.34Kg No HDD installed.

SOFTWARE

SUPPLIED

Existing NVR Client Application allows full remote configuration of NVR devices
NEW PC Client Application for remote monitor / playback of NVR device
iOS / Android app. Full device settings live monitoring & recording playback from NVR.