

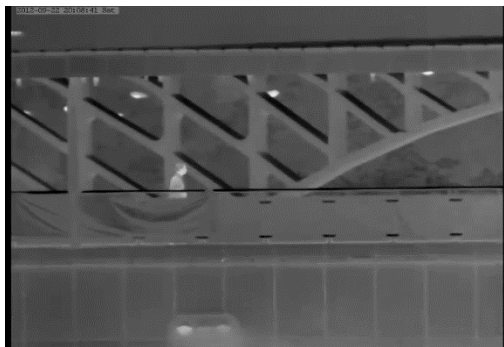
Thermal imaging surveillance IP Camera



Night remote parking monitoring



Night road monitoring



Hidden target identification



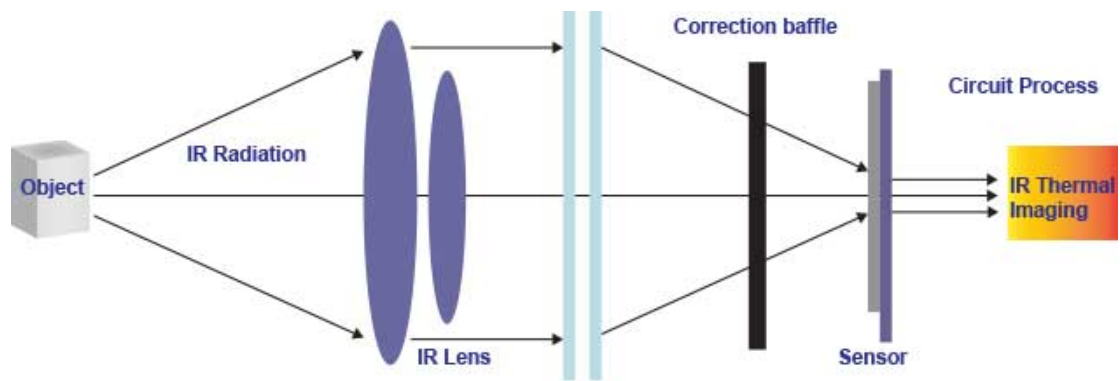
Residual heat detection

1 Product Overview

Sunell Thermal imaging cameras are made in the field of high-tech thermal imaging results. Using the latest uncooled infrared focal plane sensor and self-developed image processing algorithms, with a new generation of high thermal infrared transmittance of the lens, without the need any light source, by detecting the infrared radiation (or heat), in all weather conditions even dark environments to obtain high definition images.

2 Principle of thermal imaging technology

Any object as long as its temperature above absolute zero (-273.15°), although not light, infrared radiation, but can, also called infrared heat radiation. Objects of different temperatures in the infrared radiation is absorbed by the infrared detector, generating a temperature variation, resulting in electric effect, the electrical signal is amplified and then processed, the object is obtained with the surface of the heat distribution corresponding thermal image, that is, " **thermal imaging**. "



3 Thermal imaging IP camera Series

- SN-TPC4200K



Features:

- Uncooled infrared focal plane sensor
- 8 ~ 14um long wave infrared detection
- pixels up to 420 × 315 pixels
- Heat sensitivity, up to 50mK
- Support 8/15/25/35/50 mm focal length, such as fixed focus lens (optional)
- Support pseudo-color mode switching: Black hot / White Heat / Rainbow / on oxide red
- Support DVE image enhancement features
- Support Noise / mirroring
- Supports H.264 BP / MP / HP / MJPEG optional four coding algorithms and compatibility
- Real-time 3 yards stream output can meet local storage and network transmission of video
- 1 channel audio input, 1 channel audio output, two-way voice intercom
- Support Micro SD (maximum capacity to support 32GB) card local storage, can effectively solve the video lost due to network failure caused the problem.
- Hardware watchdog, fault auto recovery
- Metal linkage cooling design
- Three-axis rotation adjustable bracket for easy installation adjustment

- DC12V/POE supply

Specifications

Model	SN-TPC4200K
Detector performance	
Detector Type	Uncooled sensor
Induction	Microbolometer
Pixel	420×315
Pixel Pitch	25um
Response band	8~14um
Thermal sensitivity NETD	50mK
Frame rate	50/60Hz
Video features	
Fixed focus lens	8/15/25/35/50 mm (Optional)
Focus Mode	Manual
FOV	75.4° × 54.4° / 39.7° × 29.8° / 23.7° × 17.9° / 17° × 12.8° / 11.9° × 9°
Aperture	1.0
Recognition distance (body)	60/110/180/250/350M
Functional properties	
Pseudo-color image mode	Black hot / White Heat / Rainbow / Ironbow
DVE image enhancement	1 to 7
Mirroring	Horizontal / vertical / horizontal + vertical
Noise Reduction	Support, 2D/3D
Correction	Auto / Manual / External
OSD Display	Support
Image features	
Output image resolution	D1/CIF

Frame Rate	25fps
Encoding features	
Video compression formats	H.264BP/MP/HP/MJPEG
Audio compression format	G711,AMR,RAW_PCM
Multi-stream	Supported
Rate Control	CBR/VBR
Stream range adjustment	50Kb ~ 4Mb
Network features	
Network protocol	IPv4/v6,RTSP/RTP/RTCP,TCP/UDP,HTTP,DHCP,DNS,FTP,DDNS,PPPOE,SMTP,SIP
Storage protocol	CIFS, NFS
WEB Management	Built-WEB services, through remote viewing and configuration of IE
Remote upgrade and maintenance	Support
Integration Features	Support international standards Onvif v2.2 Profile-S
Maximum user visits	Supports up to 10 users simultaneously access
Interface Features	
Network interface	RJ-45, 10/100Base-T
Audio Interface	1 channel audio input, 1 channel audio output, support for two-way voice
Alarm Interface	2 alarm inputs, 2 alarm output
Analog video output interface	BNC, 75Ohm
PTZ control interface	RS485
SD card interface	Micro SD card/HCSd card, Maximum 32GB

System Features	
Intelligent Alarm	Motion detection, I / O alarm, disk alarm
Heartbeat mechanism	Supported
Storage	Local storage, NAS storage, SD card storage
Privacy masking	Five regions areas size can be set,
Character display	Time, date, channel number, channel name and custom text
Security	Password protection, support for multi-level user group management, custom permissions, a reset button
Reliability	Hardware watchdog, fault auto recovery
Physical Characteristics	
Power supply	DC12V/ POE
Power Consumption	5W
Operating Temperature	-10°C~+50°C
Humidity	RH90% MAX(Non-condensing)
Protection class	IP66
Installation	Wall / Ceiling
Size	Φ110×388mm
Weight	1900g

Dimensions (mm):

