

celduc

TY08 1100

SPN - SP5

Solid state relays

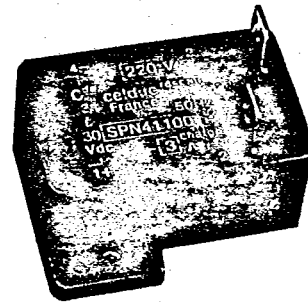
T-25-31

24-280 Vac / 3 A

SPN 4110 - SP 541 100

celduc relays in the **SP** family are small size synchronous relays with Triac controlled output. They enable 3 Amps to be switched under a voltage rating of 24 to 240 Volts A.C. They are attached with screws, output connection is with 6.3 mm quick connections. They are destined to be soldered onto printed circuit boards, type SPN has pin type input connectors with a 25.4 mm pitch.

3 to 30 Vdc input for simple adaptation to the majority of all electronic control systems.



Input characteristics (at 20° C)

Minimum control voltage	3	Vdc
Maximum control voltage	30	Vdc
Operating voltage	3 - 30	Vdc
Operating current	1.5	mA
Maximum control current	20	mA
Drop-out voltage	0.8	Vcc
Internal resistance R	1500	Ω

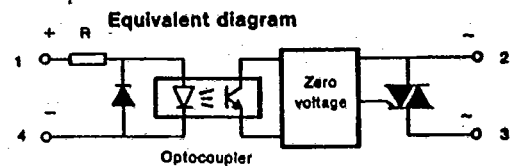
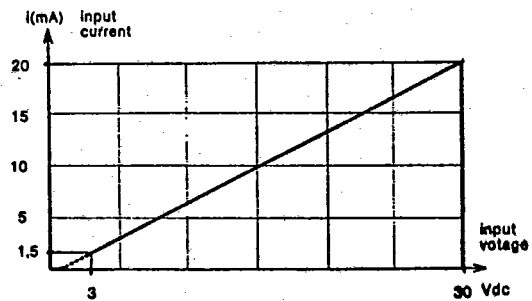
Output characteristics (at 20° C)

Nominal voltage	220	Veff
Range of operating voltage	24 to 280	Veff
Peak voltage	600	V crête
Synchronizing level	± 20	V peak
Nominal current (see curve 1 = I(θ))	3	A
Accidental overload current (Max.) (see curve 1 = I(no of cycles))	80	A peak
DC voltage drop (3 A)	1.1	Veff
Stray current in off-state (at U nominal 50 Hz)	5	mA
Internal RC network	no*	
Holding current	50	mA
Turn-on time	½ cycle max. (zero voltage)	
Turn-off time	½ cycle max. (zero current)	
Operating frequency	10 to 440	Hz
dv/ dt in off-state	200	V/ μs
dv/ dt commutating	5	V/ μs
I²t	36	A²S
di/ dt non repetitive	50	A/ μs
di/ dt repetitive	10	A/ μs

General characteristics

Storage temperature	-40 to +150	°C
Operating temperature	-40 to +90	°C
Input/ output isolation voltage	2500	Veff
Input/ output capacity	8	pF
Weight	30	g

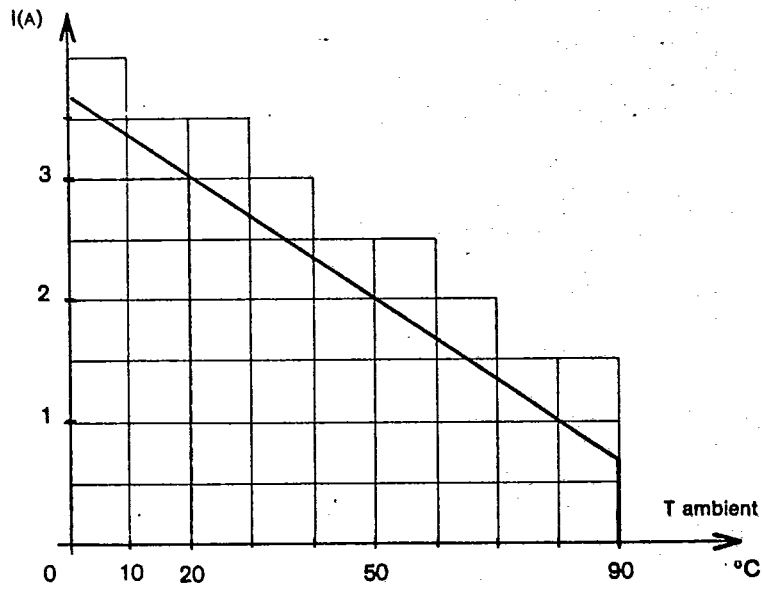
* NB : An external RC is advisable.



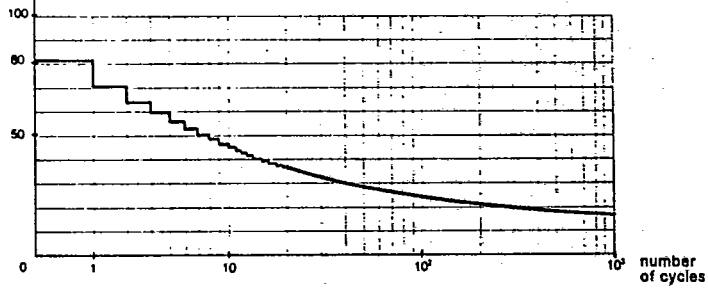
Solid state relays

SPN 41100 - SP5 41100

A-25-31



(A) Peak acceptable accidental overload current
(Initial temperature of internal junction at 110°C)



DIMENSIONS

