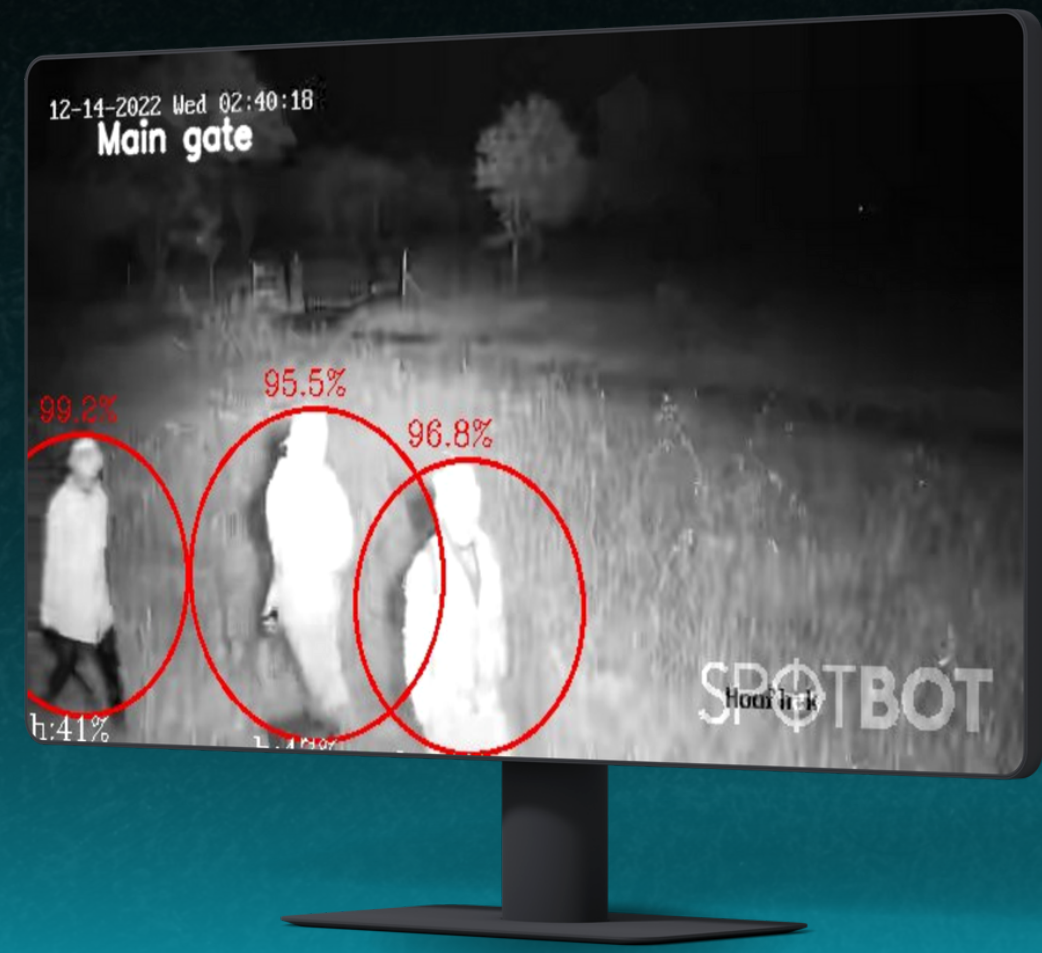


# SPOTBOT

Transforms a CCTV camera system into an advanced intruder detection system.



## ABOUT SPOTBOT

SPOTBOT is an electronic AI-hardware device that monitors the feeds of up to 8 CCTV cameras for human intrusion on a property. The device is compatible with both **Analog and IP camera systems**.

## ELIMINATES 99% OF FALSE ALARMS

SPOTBOT detects human features and excludes all other moving objects including pets, insects and nature (swaying vegetation).

If a human is detected, a Telegram app notification is sent to the user's phone.

SPOTBOT can also be used as a local system if an internet connection is not available or absent. It will still warn the user on a loudspeaker and photos that can be displayed on an HDMI screen.

## ARMED RESPONSE INTEGRATION

SPOTBOT can be linked to the user's local security firm. It can integrate with the following mainstream security software platforms:

- Oryx Listener
- Watch Manager
- Online intelligence - Signal Tower
- Patriot

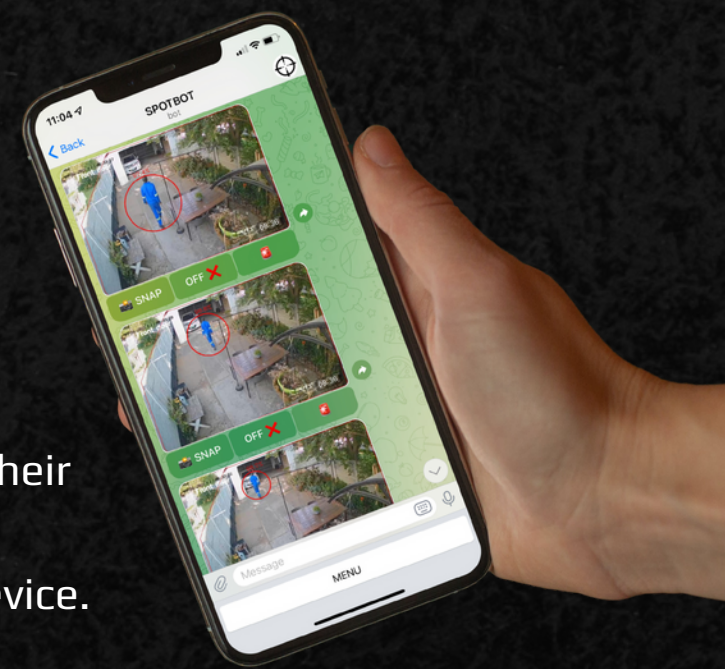
## EASY TO INSTALL

SPOTBOT is a do-it-yourself, plug-and-play security solution. The user simply connects their SPOTBOT to the same LAN (router) that their CCTV-camera system is connected to, set up the Telegram app on their smartphone, and then select all the cameras they wish to monitor.

## SPOTBOT Features

The SPOTBOT Telegram Bot installed on the user's smartphone is the portal to all their SPOTBOT features and settings. These features and settings include:

- Ability to turn SPOTBOT on and off.
- Take snapshot pictures of their cameras.
- Mute and unmute the USB-connected speaker.
- Enable or disable armed response (if their SPOTBOT is linked to a security company).
- Set up automated schedules to activate or deactivate their SPOTBOT according to their preferred schedule.
- Set up automated schedules to activate or deactivate their armed response according to their preferred schedule.
- Add or remove more users on their SPOTBOT device.
- Add or remove cameras on their SPOTBOT.



In scenarios where a SPOTBOT is installed at a premises with no internet access, these settings can also be toggled by connecting an HDMI screen to the SPOTBOT and connecting the SPOTBOT to the same LAN as the CCTV system. A local web browser will enable the user to set up all SPOTBOT parameters.

## SPOTBOT vehicle detection module

Users can upgrade their SPOTBOT with the vehicle detection module. It is an added software feature on the standard SPOTBOT hardware device that enables the SPOTBOT to notify the user when a vehicle is detected. Human and vehicle detection can be activated simultaneously.



## SPOTBOT USB relay module

Users can upgrade their SPOTBOT with the SPOTBOT USB Relay (SUR) module. This will enable their SPOTBOT device to automatically switch on a secondary device - like a siren or floodlight - in case of a SPOTBOT detection event.

Two relay switches are available on a single SPOTBOT USB Relay module, meaning users can link up to two secondary devices to their SPOTBOT, which will be triggered by specific camera detection events.



[www.spotbot.co.za](http://www.spotbot.co.za)



Contact us



Facebook



Customer Testimonials



# SPOTBOT

## TECHNICAL INFORMATION



### PHYSICAL INFORMATION

#### SPOTBOT

#### PACKAGING\*

Length (mm)	100	200
Width (mm)	150	250
Height (mm)	40	70
Weight (g)	340	790

\*PACKAGING includes SPOTBOT unit, power supply, cables and accessories

### CONNECTION PARAMETERS

Power plug/connection	USB Type-C
HDMI	Type-A Female
USB Host	x2 (900mA & 500mA Load)
LAN	10/100 / 1000M

### COMPLIANCE

CE, FCC, TELC(Japan), RoH

### ELECTRICAL INFORMATION

#### MIN

#### TYP

#### MAX

Input voltage (DC) on USB Type-C	5		20
Power (W)	12	15	20
OPERATIONAL TEMPERATURE (°C)	0		40

### POWER SUPPLY INFO

(supplied with purchase)

#### MIN

#### TYP

#### MAX

Voltage - Input (AC)	100V		240V
Voltage - Output		5.1V	
Current - Output (Max)			3A
Power (Watts)			15W
Cord Length	1.50m		
Output Connector	USB Type-C		
Input Connector	KSC 8305		

### SUGGESTED VIDEO STREAM PARAMETERS

#### MIN

#### OPTIMAL

#### MAX

Resolution	352x288	640x480	1920x1080 (HD1080)
Preferred stream	Sub stream		
Encoding	h264/h265		