



# Iteduino Nano Driver Installation Manual

As Iteduino Nano utilizes USB to serial port chip of CP2102 series instead of FT232RL on Arduino Nano, we cannot use driver program in Driver file in Arduino IDE for drive installation.

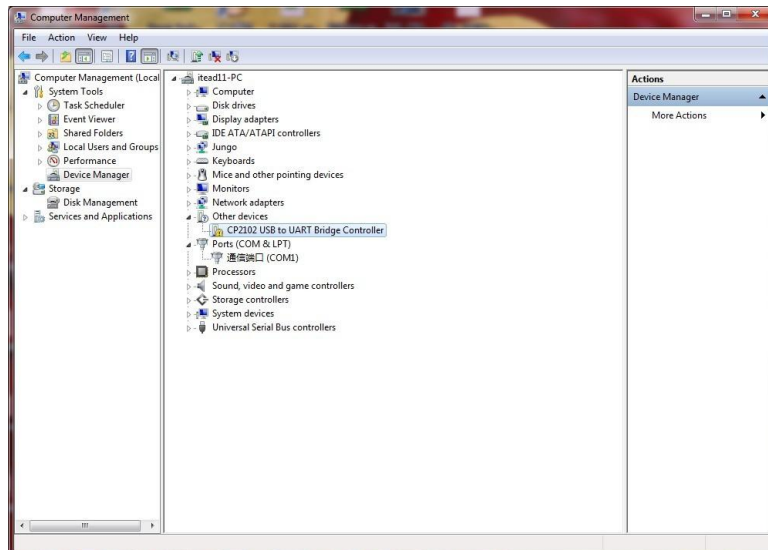
<http://www.silabs.com/products/interface/usbtouart/Pages/usb-to-uart-bridge.aspx>

You can download CO2012 driver for various platforms in the TOOL page here, including MAC version, Linux version and Windows version.

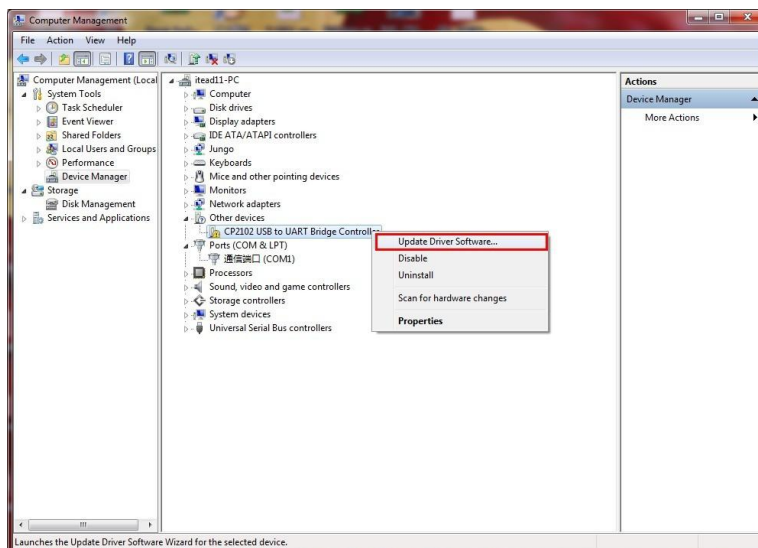
 <a href="#">CP211x_Linux.zip</a>	CP211x Linux Files	1.00	10/17/2012
 <a href="#">CP211x_Mac.zip</a>	CP211x Mac Files	1.20	10/17/2012
 <a href="#">CP211x_Windows.zip</a>	CP211x Windows Files	1.20	10/17/2012

Let's take Windows version for an example to show you the installation steps:

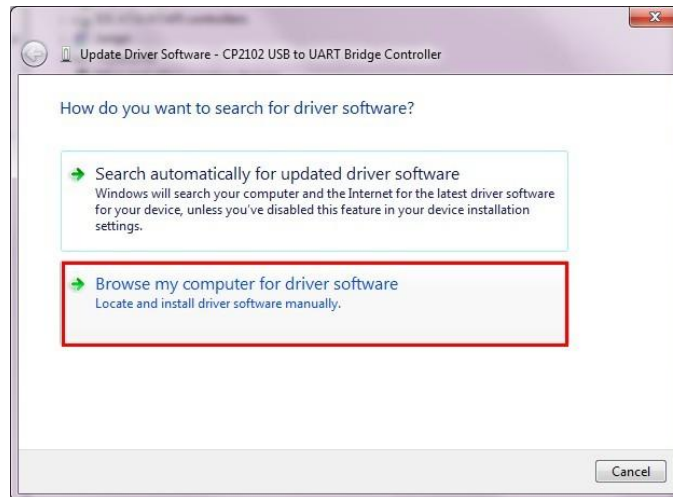
First, after connecting to Iteduino Nano, USB searched for driver and installation failed. Then open hardware device manager in Windows system, and we can find device 'CP2102 USB to UART Bridge Controller' with no driver installed.



Select the device, open right-click menu and choose 'Update driver software' option:



In the pop-up window, choose 'Browse my computer for driver software' :



Select route of downloaded driver file location, tick 'Include subfolders', then click 'next' :



Then the system will install the driver program automatically – during the process, a prompt window may be popped up asking whether to trust the driver source or not, choose yes. After driver is installed, disconnect Iteduino Nano. Then, when it is connected again, the system will identify it as a COM interface, and you can find the corresponding COM interface N.O. in hardware device manager and then choose the corresponding COM interface N.O. in Port of Arduino IDE, then you can download programs.

